

# **Installing Your Multifunction to Your Network for the First Time**

**PIXMA MX892**

**Macintosh OS**

# Installing Your Multifunction to Your Network for the First Time

PIXMA MX892  
Macintosh OS

<b>Preparing to Connect My Multifunction to My Network</b>	<b>3</b>
Network Requirements	3
Notes on Wireless Connection	4
<b>Installing the Drivers &amp; Software</b>	<b>5</b>

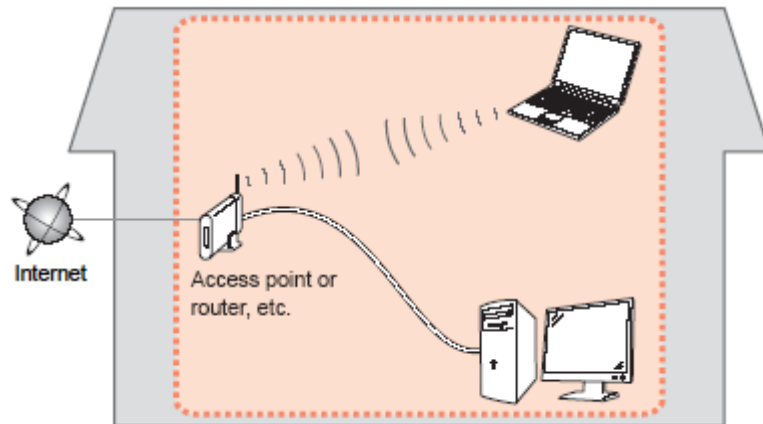
# Preparing to Connect My Multifunction To My Network

[<< Previous](#)

[Next >>](#)

## Network Requirements

Before connecting the machine to the network, make sure that configuration of the computer and access point or router is complete, and that the computer is connected to the network.



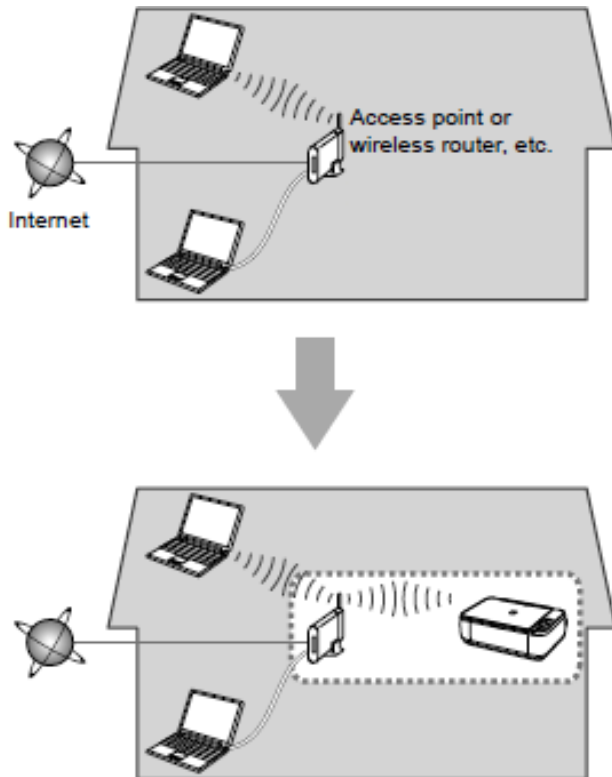
## Wireless Connection

Before connecting the machine to the network, the computer needs to be connected to the network. Make sure that configuration of the computer and access point or router is complete.

# Preparing to Connect My Multifunction To My Network

[<< Previous](#)

[Next >>](#)



An "Ad-hoc connection," which establishes a direct connection to the computer over a wireless connection without using an access point, is not supported.

A wireless access point or router is required to use your printer on a wireless LAN.

## Notes on Network Connection

- The configuration, router functions, setup procedures and security settings of the network device vary depending on your system environment. For details, refer to your device's instruction manual or contact its manufacturer.
- In an office setup, consult your network administrator
- If you connect to a network that is not protected with security measures, there is a risk of disclosing data such as your personal information to a third party.
- If an error message appears or if you have trouble with the network connection, refer to the printed manual: Network Setup Troubleshooting.
- Place the machine and computer on the same network segment.

## Software Installation

To use the machine by connecting it to a computer, software including the drivers needs to be copied (installed) to the computer's hard disk. The installation process takes about 20 minutes. (The installation time varies depending on the computer environment or the number of application software to be installed.)

### **IMPORTANT**

- Log on as the administrator (or a member of the Administrators group).
- Quit all running applications before installation.
- Do not switch users during the installation process.
- Internet connection may be required during the installation. Connection fees may apply. Consult the internet service provider.
- It may be necessary to restart your computer during the installation process. Follow the on-screen instructions and do not remove the Setup CD-ROM during restarting. The installation resumes once your computer has restarted.
- If the firewall function of your security software is turned on, a warning message may appear that Canon software is attempting to access the network. If such a warning message appears, set the security software to always allow access.

## Installing the PIXMA MX892 on Your Wireless Network

If you are installing your printer on your network for the first time, a step-by-step walk through of the wireless setup is built in to the installation routine of the software that shipped with your PIXMA.

**Insert the Setup CD-ROM \*** that came with your printer into your CD-ROM drive and proceed through the easy to follow instructions. You'll be printing wirelessly in no time. Be sure to select **Network Connection**, then **Wireless Connection** on the Connection Method Selection screens (1-1 and 1-2).

### 1 -1 Connection Method Selection

Select a method to connect the printer.



Network Connection

Select this when using the printer with your computer without using a **USB** cable, or when sharing the printer with other computers. **Access point** or **router** is

### 1 -2 Connection Method Selection

Select a method to connect to the **network**.



Wireless Connection

Select this when connecting the printer to the network via Wi-Fi (without using a cable).

Continue to follow instructions until the **Setup Procedure Selection** screen (3-1) appears. This is shown on the next page

\* If you do not have the Setup CD-ROM you can still Install the printer using the download file available on our web site. [Click Here for information.](#)

The printer automatically searches for access points that support **WPS** (Wi-Fi Protected Setup)\*.

\*Unless you are absolutely sure your access point supports WPS and you are familiar with activating this on your access point, **press the Stop button** on the printer's operation panel and click on **Other Methods** on the **Setup Procedure Selection** screen (screenshot shown below)\*.

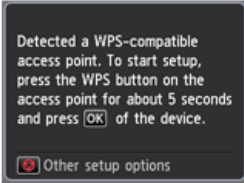
If the **Push Button Method** is not shown on the printer's operation panel (when no WPS access points have been detected), select **Standard setup** on the printer's operation panel, then click **Other Methods** on the **Setup Procedure Selection** screen

3 -1 Setup Procedure Selection

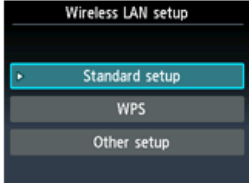
The printer will automatically search for **access points** supporting **WPS** (Wi-Fi Protected Setup).

Click the method below that matches the screen displayed on your printer.

If the Push Button Method screen is displayed on the printer but you are unsure if your access point or **router** supports this technology, press the **Stop** button and choose **Standard setup**.



[Push Button Method](#)



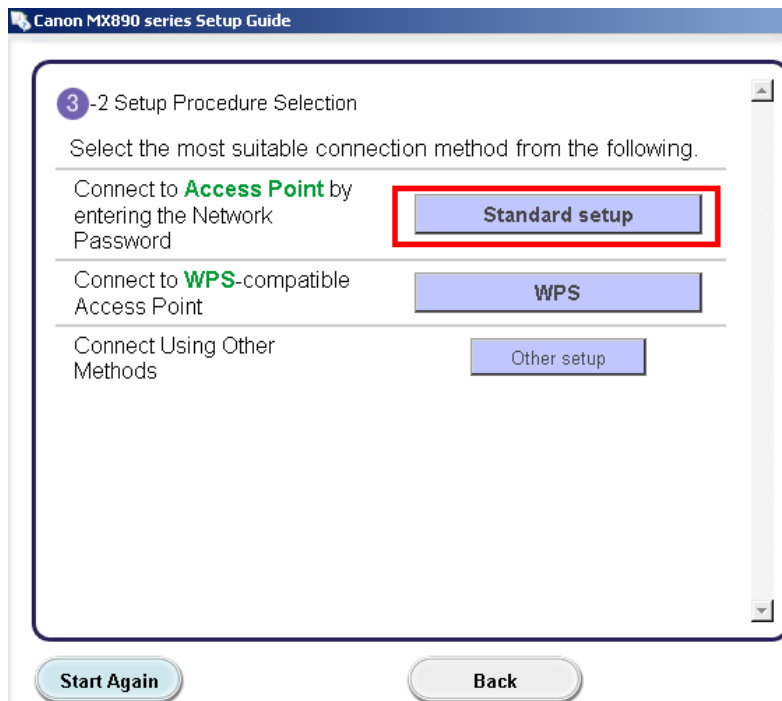
[Other Methods](#)

If you selected the **Push Button Method**, follow any remaining instructions to complete setup.

If you selected **Other Methods**, please continue to the next page for important information

For Standard setup only

Select **Standard setup** on the **Setup Procedure Selection** screen (3-2)

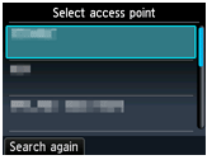


Continue to next page before proceeding any further with setup




Follow On-screen instructions. When you get to Step 4-2 and later in Step 4-4 ( screens shown below) you will need to know SSID and password information\*

## Step 4-2




4 -2 Connection via Standard setup

1. Select your **access point**, then press the **OK** button.  
If another screen appears, refer to "Troubleshooting" on the right.

If you don't know your access point name  **Confirm the access point name (automatic display)**


Select the automatically displayed access point name in the printer screen.

## Step 4-4



4 -4 Connection via Standard setup

1. Enter the **network password (WEP key or passphrase)** of your **access point or router** into the printer.

If you don't know the network password for your access point  **Confirm the network password (automatic display)**

Enter the automatically displayed network password in the printer screen.  
Click [here](#) for details on how to enter characters

2. Press the left **Function** button.

**\*Unless you are absolutely certain of this information, please continue to the next page for information on locating / verifying this information**

Continue to follow the on-screen instructions. Click **Next** when the **Completion of Connection** screen (4-7) appears.

# Connecting to the Wireless Network

[<< Previous](#)

[Next >>](#)

If you don't know your Access Point / Router name or SSID\*, or the Passphrase or Network key for your wireless network, you can find this information during Standard setup using the Setup CD-ROM or the downloaded file (Mini Master Setup).

\*The terms 'SSID' and 'AccessPoint / Router' refer to a name used to identify the specific Access Point or Router. 'Passphrase' and 'Network Key' refer to a password required to prevent unauthorized access to communication.

Look for the **Confirm the access point name (automatic display)** or the **Confirm the network key (automatic display)** buttons during the setup procedure.



Clicking either of these buttons will give the needed information. On a Mac OS X system you may need to click 'Allow' on one or more windows after clicking either of the above buttons. See example below of the Wireless Lan Setup Information window. (appearance varies depending on Operating System). Use the provided information when selecting the Access Point / Router and for entering the Network Key (Steps 4-2 and 4-4 on the previous page).

Below is information about the access points detected from your computer.

Wireless LAN Setup Information:

Access Point Na...	Network Key (Encryption Key)
YourNetName	YourPassPhraseorNetKey

OK

# Installing the Drivers & Software

[<< Previous](#)

[Next >>](#)

Network setup is complete. Continue to follow any remaining On-screen instructions to install the software. On the Software Installation List screen, select any software to be installed. **MP Drivers** and **Canon IJ Network Tool** are required for the printer to be able to print and scan and cannot be de-selected. **MP Navigator EX** and **Easy-PhotoPrint EX\*** are highly recommended to take full advantage of your printer's features.

**Software Installation List**

The selected software will be installed. Make sure that the software you want to install is selected, and then click [Next].

You need to install all the software below to use all functions of this printer.

<input checked="" type="checkbox"/>	MP Drivers	190 MB
<input type="checkbox"/>	ScanGear	90 MB
<input type="checkbox"/>	On-screen Manual	250 MB
<input type="checkbox"/>	MP Navigator EX	95 MB
<input type="checkbox"/>	Speed Dial Utility	10 MB
<input type="checkbox"/>	Easy-PhotoPrint EX	610 MB
<input type="checkbox"/>	Solution Menu EX	20 MB
<input checked="" type="checkbox"/>	Canon IJ Network Tool	20 MB

Drive Lion 30925 MB free space

Total used space: 210 MB

Select All

Clear All

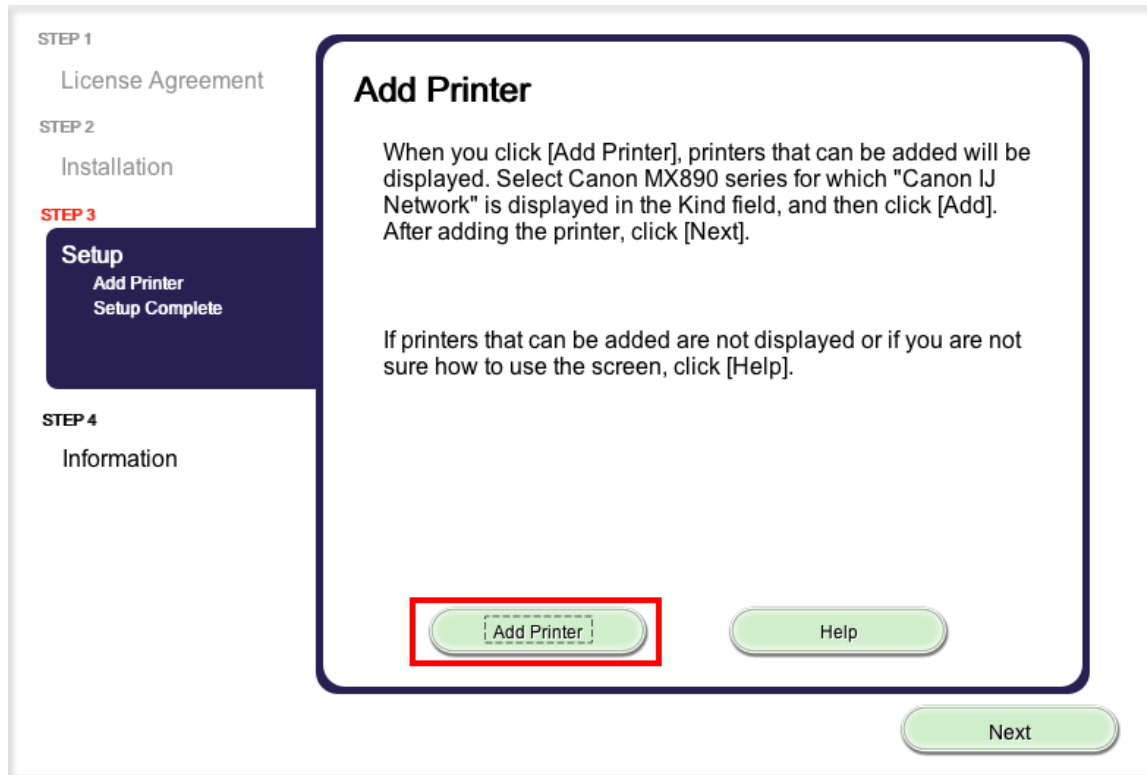
Back

Next

**\*Note:** If you are using the downloaded **Mini Master Setup** file, only the **MP Drivers** and **Canon IJ Network Tool** will be installed.

You can download the additional software applications from the **Software** section of the **Drivers & Software** page where you obtained the Mini Master setup file.

Click **Add Printer** on the **Add Printer** window.

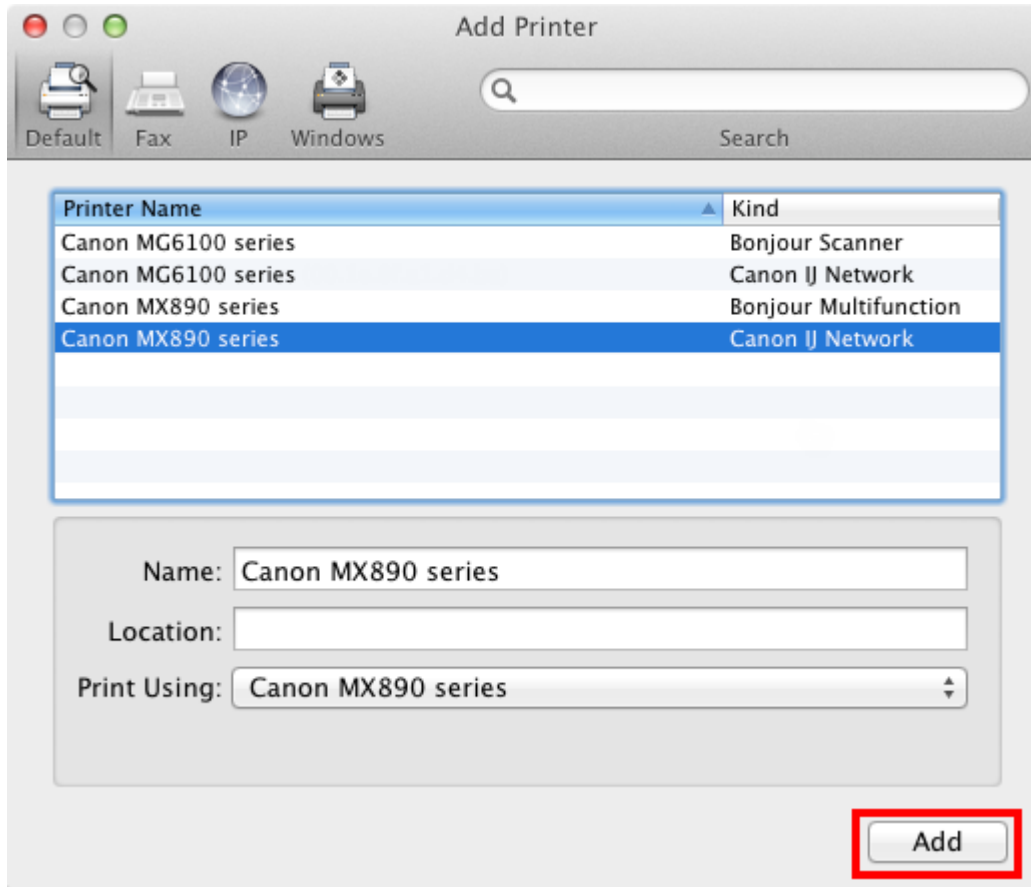


# Installing the Drivers & Software

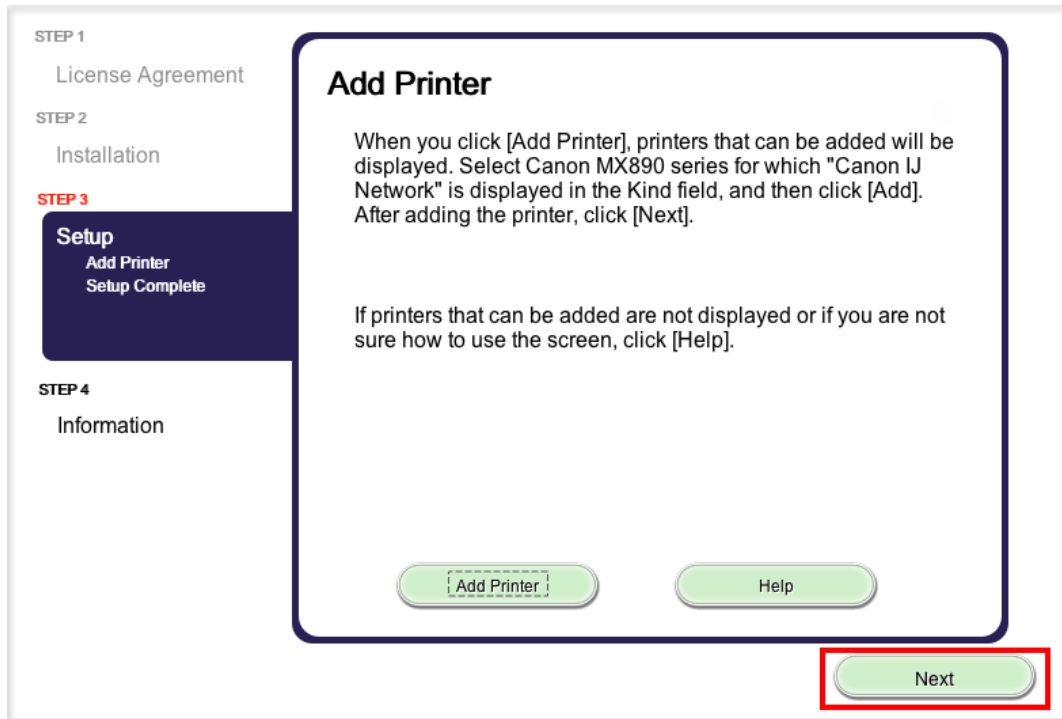
[<< Previous](#)

[Next >>](#)

Select the **Canon MX890 series** with **Canon IJ Network** listed in the **Kind** column. Click **Add**.



Click **Next** on the **Add Printer** window.



Setup is complete. Continue to follow on-screen instructions to finish and exit the setup program.

## Installing the PIXMA MX892 on Your Wireless Network

If you can't find your CD-ROM, you may download the MX890 series Mini Master Setup, which includes the same step-by-step installation as the CD-ROM, by following the instructions below:

1. [Click here to access the MX892 Drivers & Software page.](#)
2. Select the operating system and version of your computer (see example below).
3. Expand the '**Drivers**' section, if necessary, by clicking the red triangle.
4. Click on '**MX890 series Mini Master Setup**' .
5. After reading the details and disclaimer, click '**I Agree – Begin Download**' and save the file to your computer.
6. Once the download is complete, double-click the file from its download location to begin the installation.

### Drivers & Software

Select an Operating System and OS Version from the drop down menu below then click on [How to](#) view the latest supported files for your product. Click on the file description to navigate to details. Click on "I Agree - Begin Download" to start downloading.

Mac OS OS X v10.7 Lion [How to](#)

Select Language:  English  Spanish  All

Show All

File Description	Date
MX890 series Scanner Driver Ver. 18.1.0b (OS X ...	08/31/12
MX890 series CUPS Printer Driver Ver. 10.67.1.0...	07/26/12
ICA Driver Ver. 1.11.0n (OS X 10.6/10.7/10.8)	07/11/12
MX890 series Mini Master Setup (Mac OS X 10.5/...	03/16/12

[Return to Setup instructions](#)