

# **Installing Your Multifunction to Additional Computers on Your Network**

**PIXMA MX892**

**Windows OS**

# Installing Your Multifunction to Additional Computers on Your Network

PIXMA MX892  
Windows OS

<b>Preparing to Connect My Multifunction To My Network</b>	<b>3</b>
Network Requirements	3
Notes on Wireless Connection	4
<b>Using the Machine from Additional Computers</b>	<b>5</b>

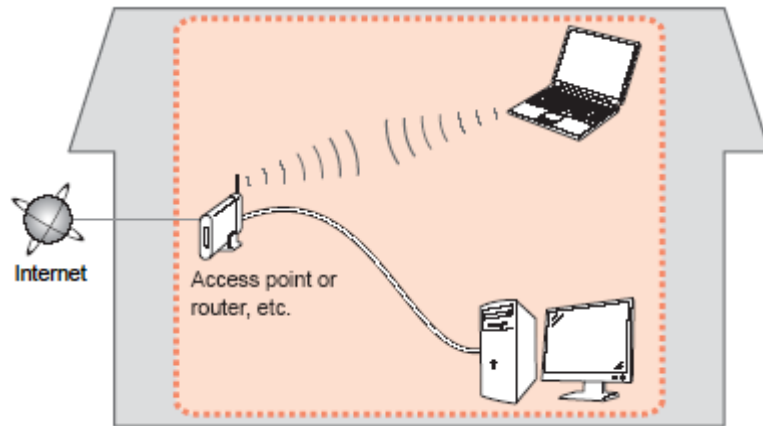
# Preparing to Connect My Multifunction To My Network

[<< Previous](#)

[Next >>](#)

## Network Requirements

Before connecting the machine to the network, make sure that configuration of the computer and access point or router is complete, and that the computer is connected to the network.



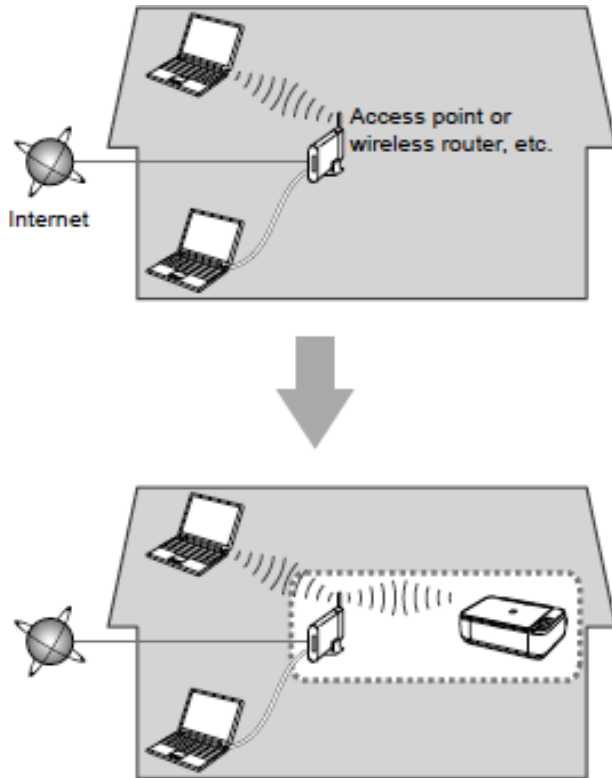
## Wireless Connection

Before connecting the machine to the network, the computer needs to be connected to the network. Make sure that configuration of the computer and access point or router is complete.

# Preparing to Connect My Multifunction To My Network

[<< Previous](#)

[Next >>](#)



An "Ad-hoc connection," which establishes a direct connection to the computer over a wireless connection without using an access point, is not supported.

**A wireless Access Point or Router is required to use your printer on a wireless LAN**

## Notes on Network Connection

- The configuration, router functions, setup procedures and security settings of the network device vary depending on your system environment. For details, refer to your device's instruction manual or contact its manufacturer.
- In an office setup, consult your network administrator
- If you connect to a network that is not protected with security measures, there is a risk of disclosing data such as your personal information to a third party.
- If an error message appears or if you have trouble with the network connection, refer to the printed manual: Network Setup Troubleshooting.
- Place the machine and computer on the same network segment.

## Software Installation

If the machine is already connected to a wireless connection, it can be used from additional computers on the same network. Connection to the network is confirmed automatically. Only the software needs to be installed. It is not necessary to make any changes or settings on the printer itself.

### IMPORTANT

- Log on as the administrator (or a member of the Administrators group).
- Quit all running applications before installation.
- If the firewall function of your security software is turned on, a warning message may appear that Canon software is attempting to access the network. If such a warning message appears, set the security software to always allow access.

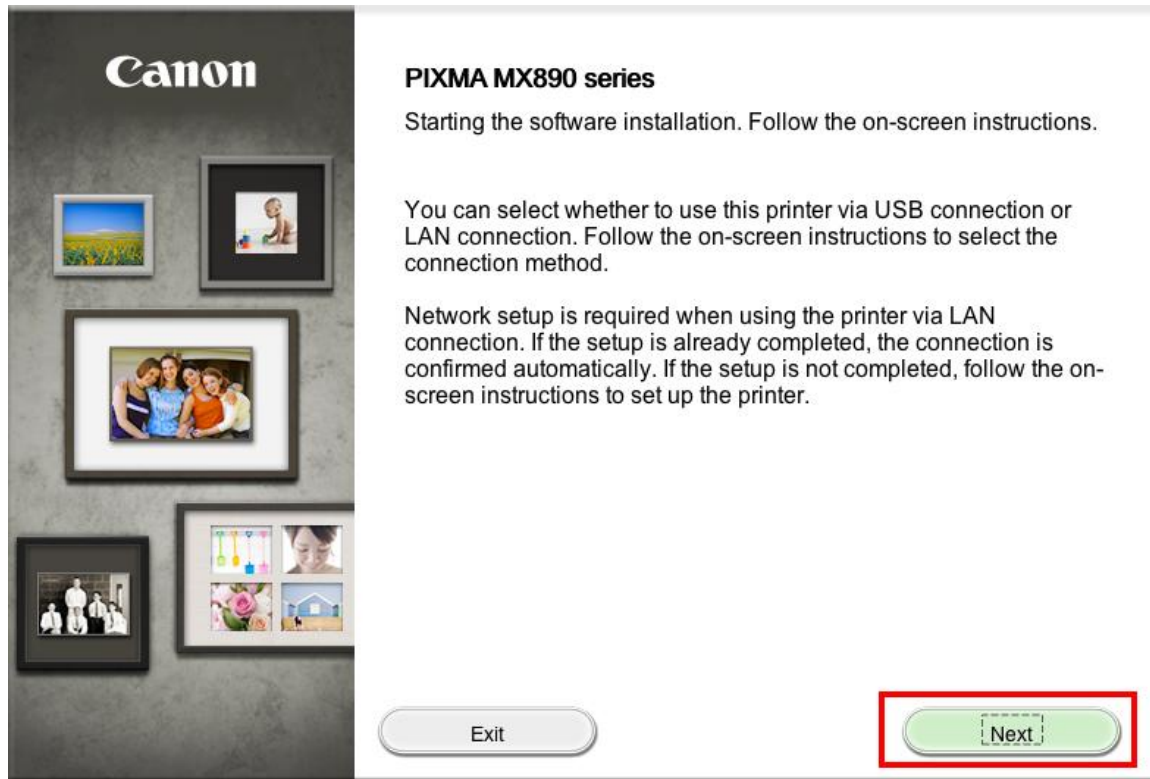
A step-by-step walk through of the wireless setup is built in to the installation routine of the software that shipped with your PIXMA.

**Insert the Setup CD-ROM\*** that came with your printer into your CD-ROM drive of each computer you wish to use with the printer and proceed through the easy to follow instructions

**\*Note:** If you don't have or cannot use the Setup CD-ROM, you can still install the software on the computer by using a file downloaded from our web site. [Click here for information](#)

## Installing the PIXMA MX892 on Additional Computers

Follow any preliminary on-screen instructions. When the following screen appears, click **Next**.



Network connection is automatically confirmed. Continue to follow any remaining On-screen instructions to install the software. On the **Software Installation List** screen, select any software to be installed. **MP Drivers** is required for the printer to be able to print and scan and cannot be de-selected. **MP Navigator EX** and **Easy-PhotoPrint EX\*** are highly recommended to take full advantage of your printer's features.

### Software Installation List

The selected software will be installed. Make sure that the software you want to install is selected, and then click [Next].

<input checked="" type="checkbox"/> MP Drivers	250 MB	Drive C: 396319 MB free space Total used space: 706 MB
<input checked="" type="checkbox"/> On-screen Manual	40 MB	
<input checked="" type="checkbox"/> My Printer	10 MB	
<input checked="" type="checkbox"/> MP Navigator EX	80 MB	
<input checked="" type="checkbox"/> Speed Dial Utility	10 MB	
<input checked="" type="checkbox"/> Easy-PhotoPrint EX	270 MB	
<input checked="" type="checkbox"/> Solution Menu EX	20 MB	
<input checked="" type="checkbox"/> Adobe RGB (1998)	1 MB	
<input checked="" type="checkbox"/> Easy-WebPrint EX	25 MB	
<input type="checkbox"/> XPS Driver	120 MB	

Estimated installation time: 10 to 20 minutes

**\*Note:** If you are using the downloaded **Mini Master Setup** file, only the **MP Drivers** will be installed.

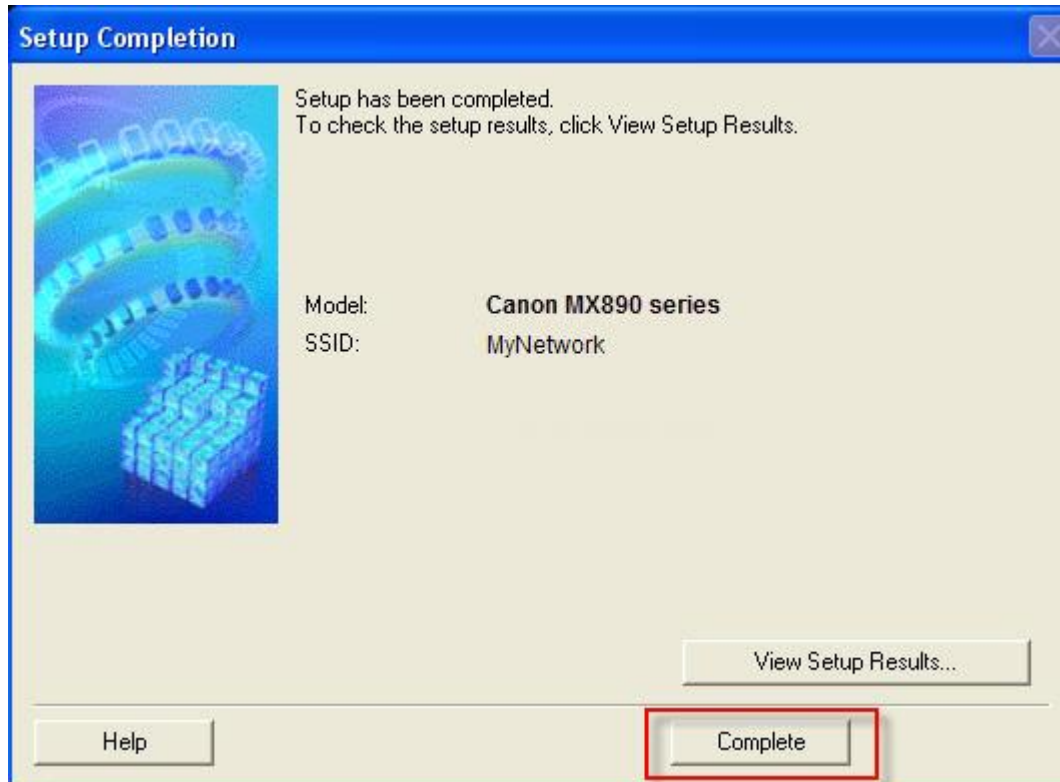
You can download the additional software applications from the **Software** section of the **Drivers & Software** page where you obtained the Mini Master setup file.

# Installing the Drivers & Software

[<< Previous](#)

[Next >>](#)

Continue to follow on-screen instructions. Click **Complete** on the **Setup Completion** window.



Follow any remaining on-screen instructions to finish and exit the setup program.



## Installing the PIXMA MX892 on Your Wireless Network

If you can't find your CD-ROM, you may download the **MX890 series Mini Master Setup**, which includes the same step-by-step installation as the CD-ROM, by following the instructions below:

1. [Click here to access the MX892 Drivers & Software page.](#)
2. Select the operating system and version of your computer (see example below).
3. Expand the '**Drivers**' section, if necessary, by clicking the red triangle.
4. Click on '**MX890 series Mini Master Setup**' .
5. After reading the details and disclaimer, click '**I Agree – Begin Download**' and save the file to your computer.
6. Once the download is complete, double-click the file from its download location to begin the installation.

### Drivers & Software

Select an Operating System and OS Version from the drop down menu below then click on : view the latest supported files for your product. Click on the file description to navigate to dc click on "I Agree - Begin Download" to start downloading.

Windows  Windows 8 (x64)  [How to](#)

Select Language:  English  Spanish  All

Show All

▼ Drivers		Sort by	Most Recent Post De
File Description			Date
<input type="checkbox"/> <b>MX890 series Mini Master Setup (Windows 8 x64...</b>			10/12/12
<input type="checkbox"/> <b>MX890 series MP Driver Ver. 1.01 (Windows 8/8 x...</b>			10/05/12
<input type="checkbox"/> <b>MX890 series XPS Printer Driver Ver. 5.55a (Win...</b>			10/05/12

[Return to Setup instructions](#)