

Getting Your Multifunction Back On Your Network After A Router Or Network Change

PIXMA MX410
Windows OS

If any of the following situations exist, you will need to Uninstall and Re-Install the MP Drivers

- You have replaced your Router or Access Point
- You want to use a different wireless network
- Router settings have been changed.

Uninstalling and Re-installing Your Multifunction to Your Network

PIXMA MX340
Windows OS

Uninstalling the Multifunction Drivers	4
Preparing to Connect My Multifunction to My Network	6
Network Requirements	6
Important Information You Need Before Adding Your Multifunction	7
Downloading & Installing the Drivers	8
Download the Driver	8
Installing the Driver	10

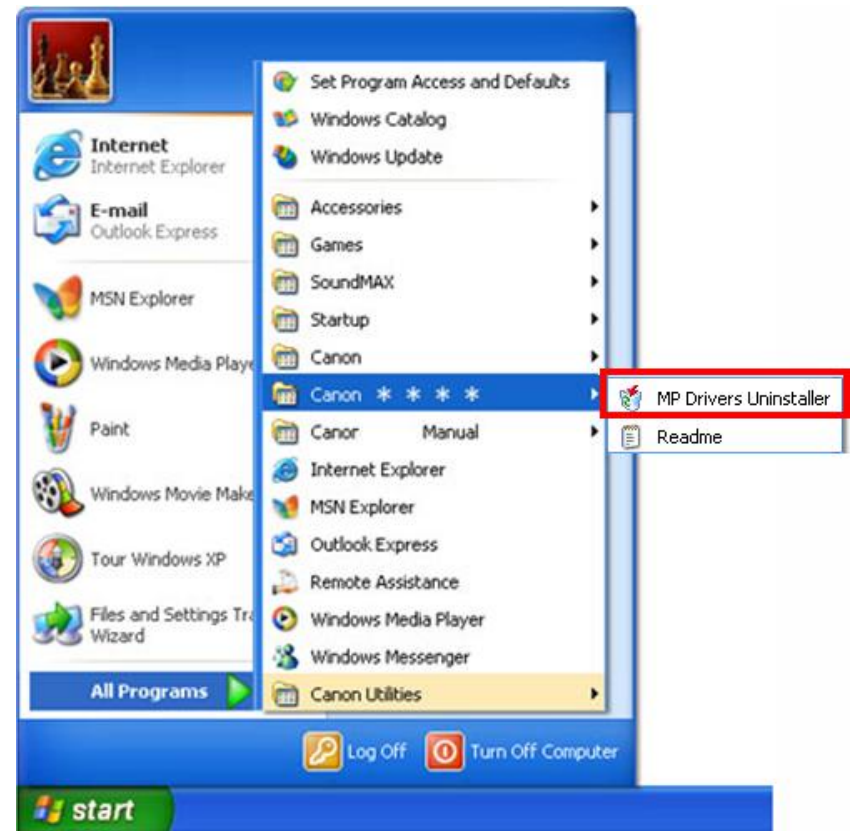
Uninstalling the Multifunction Drivers

[<< Previous](#)

[Next >>](#)

Note: Login as a user with Administrator privileges to uninstall . Turn off any programs running in the background, such as antivirus programs and firewalls before beginning.

1. Select 'All Programs' (for Windows XP / Vista / 7) from the Start menu.
2. Select the name of the printer model to remove and select 'MP Drivers Uninstaller.'

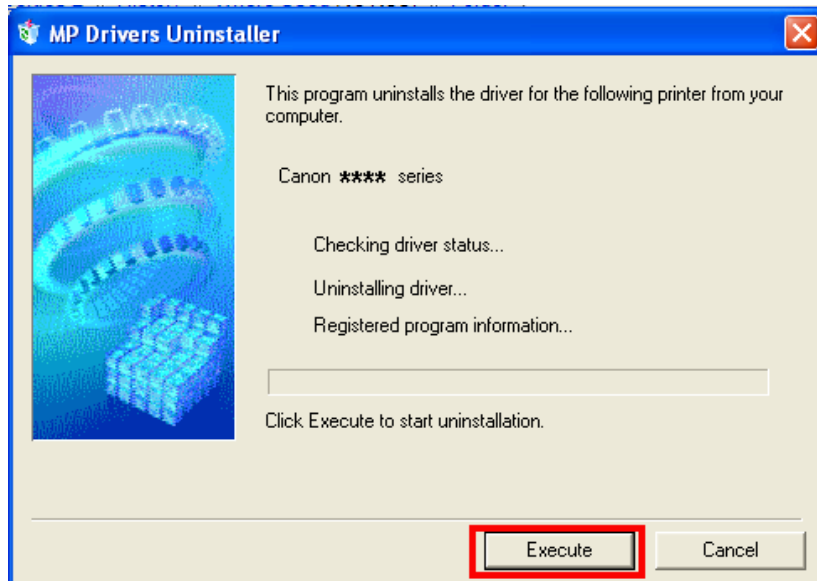


Uninstalling the Multifunction Drivers

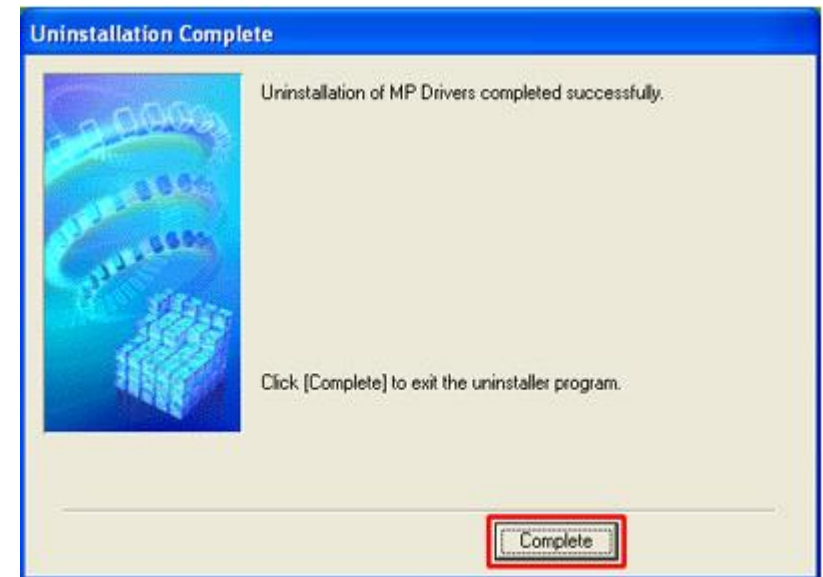
[<< Previous](#)

[Next >>](#)

3. When the MP Drivers Uninstaller window is displayed, click 'Execute.'



4. When the confirmation window is displayed, click 'Yes.'
5. When the Uninstallation Complete window is displayed, click 'Complete.'



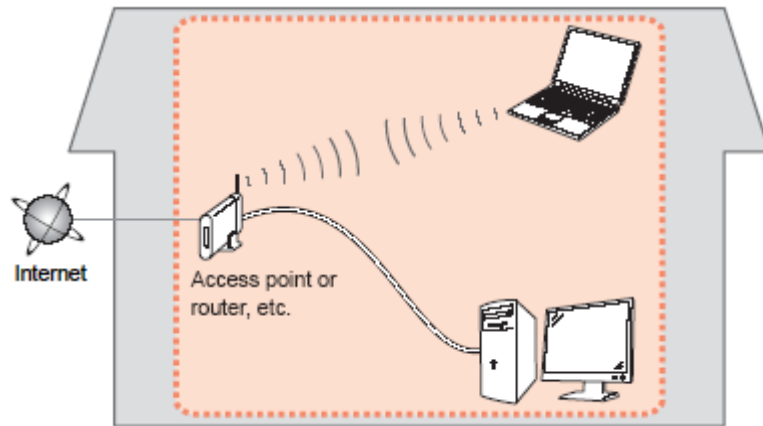
Preparing to Connect My Multifunction To My Network

[<< Previous](#)

[Next >>](#)

Network Requirements

Before connecting the machine to the network, make sure that configuration of the computer and access point or router is complete, and that the computer is connected to the network.



Notes on Network Connection

- The configuration, router functions, setup procedures and security settings of the network device vary depending on your system environment. For details, refer to your device's instruction manual or contact its manufacturer.
- The machine cannot be used over a wireless and wired connection at the same time.

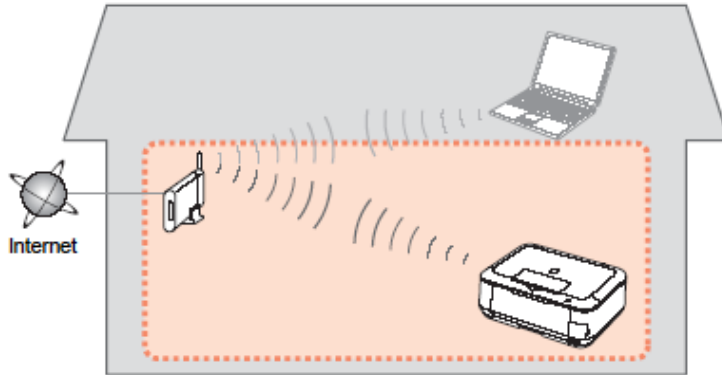
Wireless Connection

Connect to your network environment over a wireless connection.

Preparing to Connect My Multifunction To My Network To My Network

[<< Previous](#)

[Next >>](#)



An "Ad-hoc connection," which establishes a direct connection to the computer over a wireless connection without using an access point, is not supported.

Be sure to prepare an access point.

Important Information You Need Before Adding Your Multifunction

The following information is required to connect to your access point or router.

- **Access Point Name/Network Name:**

Also referred to as **SSID**. A name to identify the specific access point.

- **Network Key:**

Also referred to as encryption key, WEP key or WPA/WPA2 passphrase, Pre-Shared key.

A password required to set to prevent unauthorized access to communication.

Check your access point or router for the following information, and then write it down.

NOTE: For details on how to check the following information, refer to the manual of your access point or router, or contact its manufacturer.

Downloading the Driver

To use the machine by connecting it to a computer, software including the drivers needs to be copied (installed) to the computer's hard disk. The installation process takes about 20 minutes. (The installation time varies depending on the computer environment or the number of applications to be installed.)

Step One

Go to the Canon USA Download Library
[Click here to go MX410 download library page](#)

Step Two

In the **Drivers / Software Selection** section, select your operating system in the **Select OS** dropdown menu.

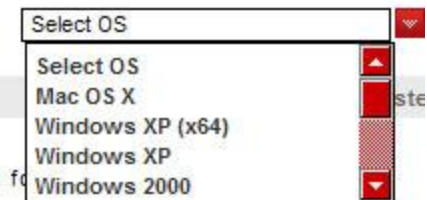
Drivers & Software

Choose an operating system from the drop down menu then select the appropriate driver from the list below

Choose Operating System:

Firmware

No firmware updates are available for



The image shows a screenshot of a web interface. On the left, there is a dropdown menu labeled 'Choose Operating System:' with the text 'Firmware' below it. To the right, a larger dropdown menu is open, showing a list of operating systems: 'Select OS', 'Mac OS X', 'Windows XP (x64)', 'Windows XP', and 'Windows 2000'. The 'Select OS' option is currently selected in the larger menu. The background of the page is white, and the text is in a standard sans-serif font.

Step Three

In the Drivers section, click the link* (Color will change to red when pointer is on the file name) for the **MP Driver**

Choose Operating System:

Drivers	Date Posted
mp68-win-mx410-1 00-ejs.exe MX410 series MP Driver Ver. 1.00 (Windows 7/7 x64/Vista/Vista64/XP/XP x64)	12/27/2010

NOTE: The driver names will vary based on operating system (OS) selected. Make sure you have selected the correct OS and select the driver that states “**MP Driver.**”

Step Four

On the next screen, read the information and instructions and click **I Agree - Begin Download**
Once the file has been downloaded, double-click it to begin the installation process

IMPORTANT:

- Quit all running applications before installation.
- Log on as the administrator (or a member of the Administrators group).
- Do not switch users during the installation process.
- Internet connection may be required during the installation. Connection fees apply.
- It may be necessary to restart your computer during the installation process. Follow the on-screen instructions. The installation resumes once your computer has restarted.

If the firewall function of your security software is turned on, a warning message may appear that Canon software is attempting to access the network. If such a warning message appears, set the security software to always allow access.

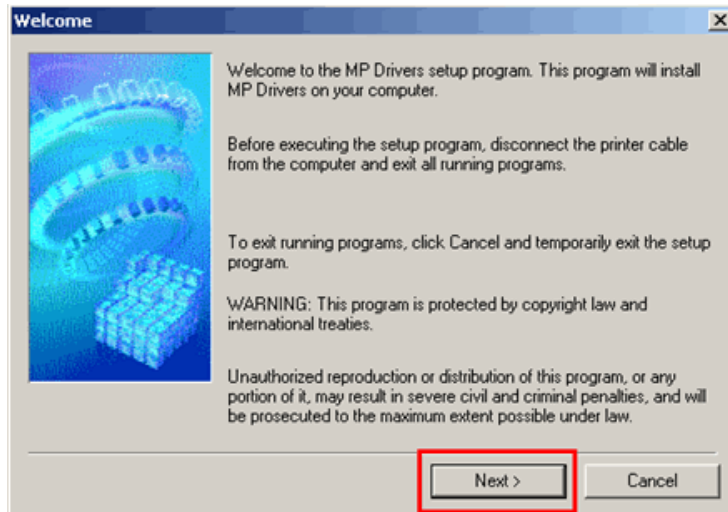
Installing the Driver

NOTE: If a **User Account Control** screen appears, click **Continue** or **Yes** (depending on Windows version) to continue.

NOTE: If the same screen reappears in subsequent steps, click **Continue** or **Yes**.

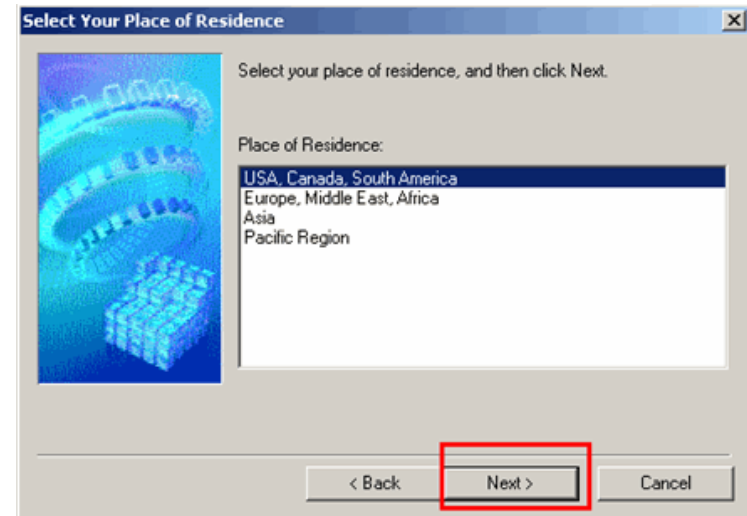
Step One

Click **Next** on the **Welcome** screen.



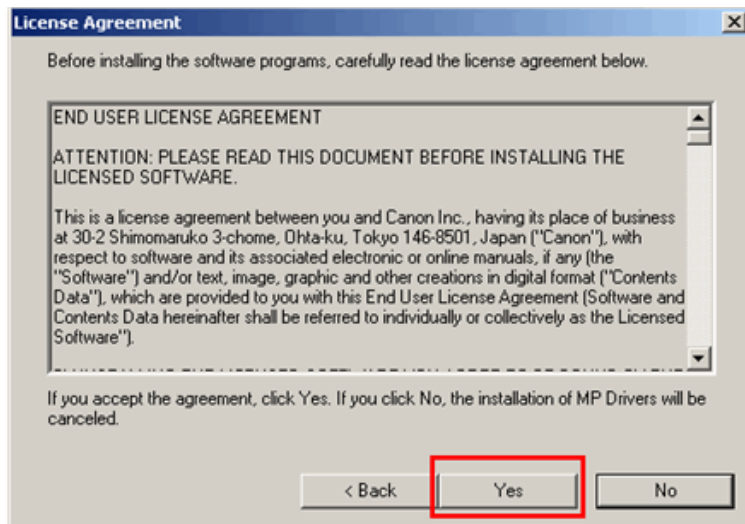
Step Two

Select your place of residence and click **Next**.



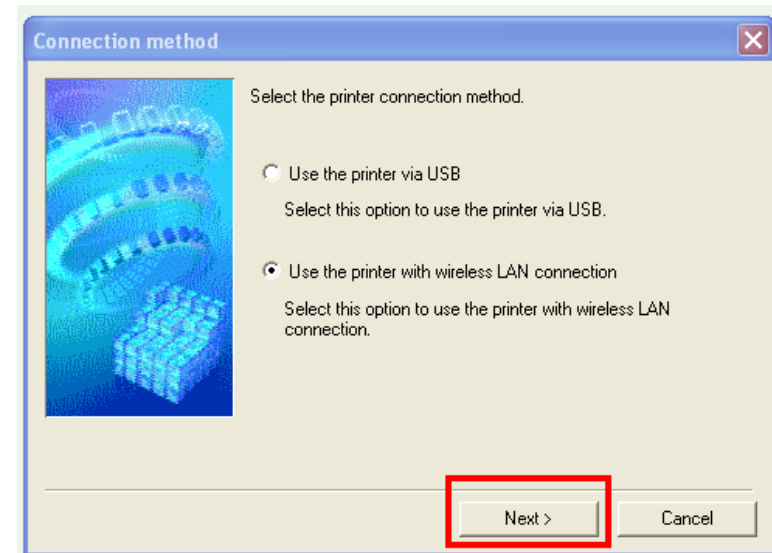
Step Three

Click **Yes** for the License Agreement.



Step Four

At the **Connection method window**, click Use the printer with wireless LAN connection, then click Next

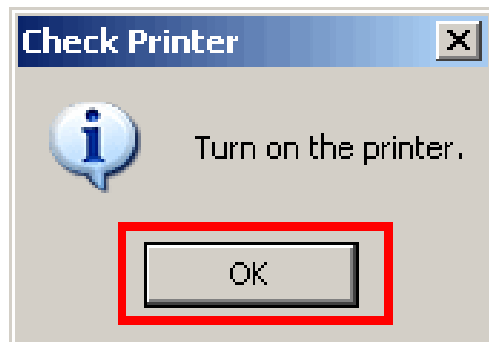


If the **Please Allow All Install Wizard Processes** screen appears, click **Next**.

Installation starts. Follow any on-screen instructions to install the software.

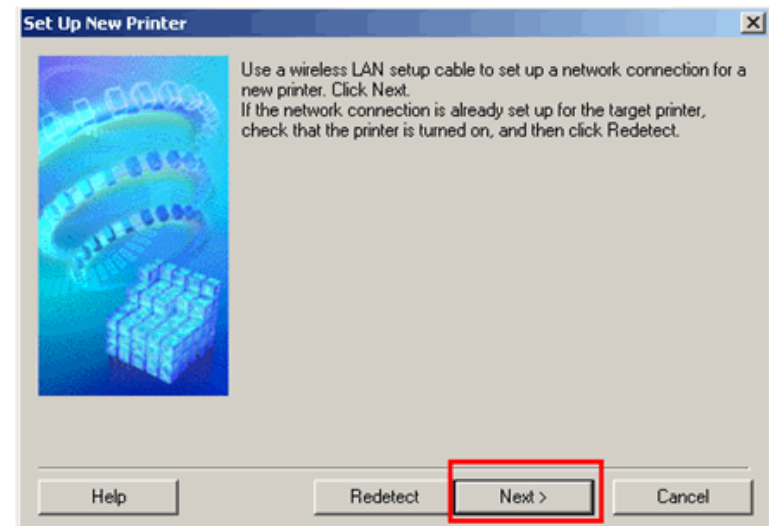
Step Five

Confirm the printer is powered on and then click **OK**.



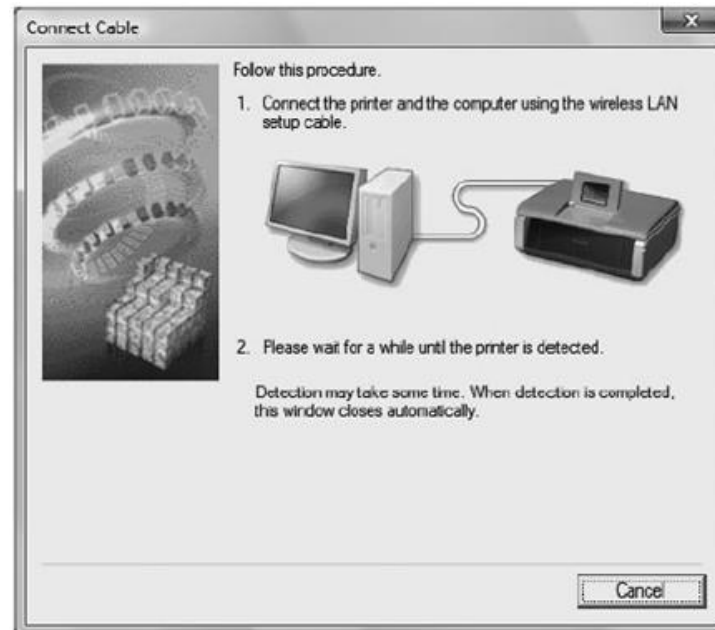
Step Six

Click **Next** on the **Set Up New Printer** window.



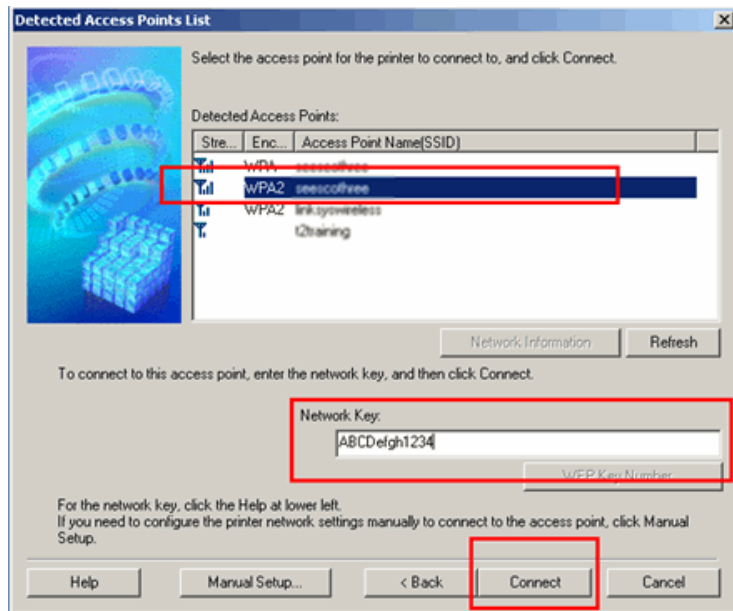
Step Seven

Connect the computer and printer with the network setup cable (USB cable)



Step Eight

If the **Detected Access Points List** screen appears, select the target access point name/network name (SSID), enter the network key and click **Connect**.

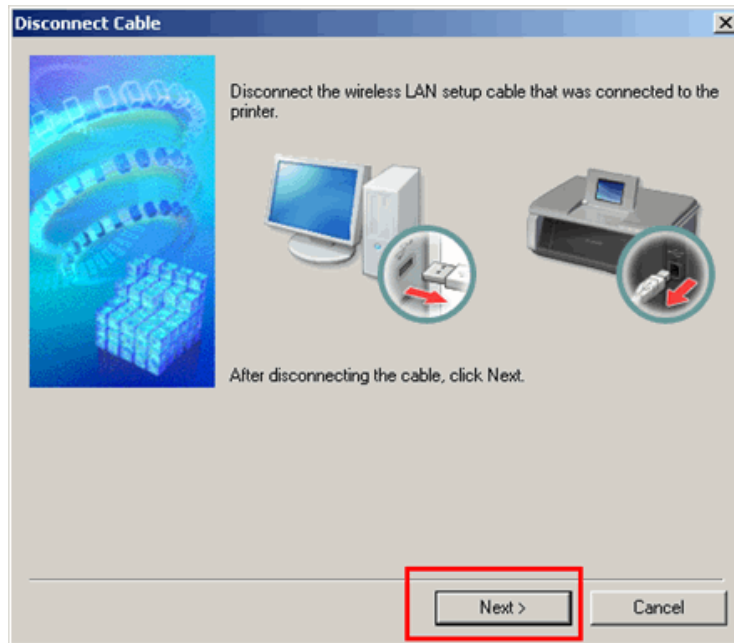


If the **Confirm Connection Access Point** screen appears, make sure that the target access point is displayed, then click **Yes**.



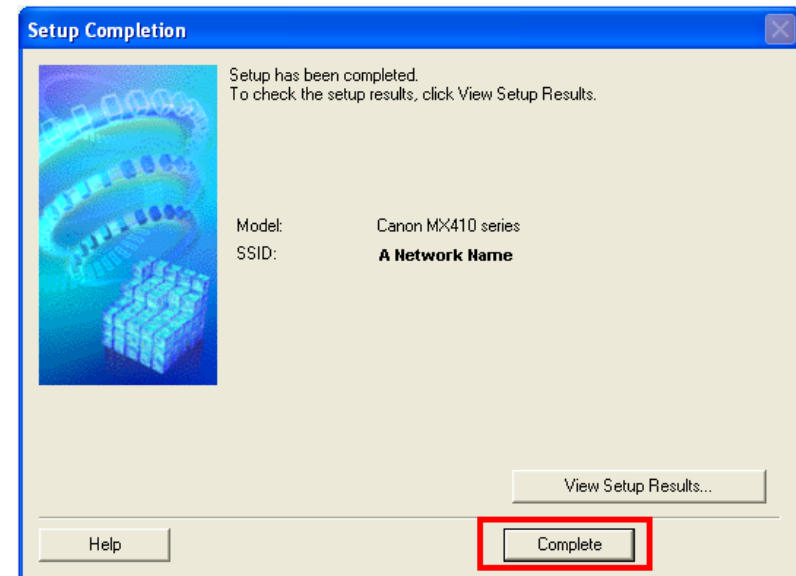
Step Nine

Remove the Wireless LAN setup cable, then click **Next**.



Step Ten

Click **Complete** on the **Setup Completion** screen.



Wireless setup is now complete