



Installing Your Multifunction to Additional Computers on Your Network

PIXMA MG8220

Macintosh OS

Installing Your Multifunction to Additional Computers on Your Network

PIXMA MG8220
Macintosh OS

Preparing to Connect the Multifunction to the Network	3
Network Requirements	3
Notes on Wireless Connection	4
Installing the Drivers	5

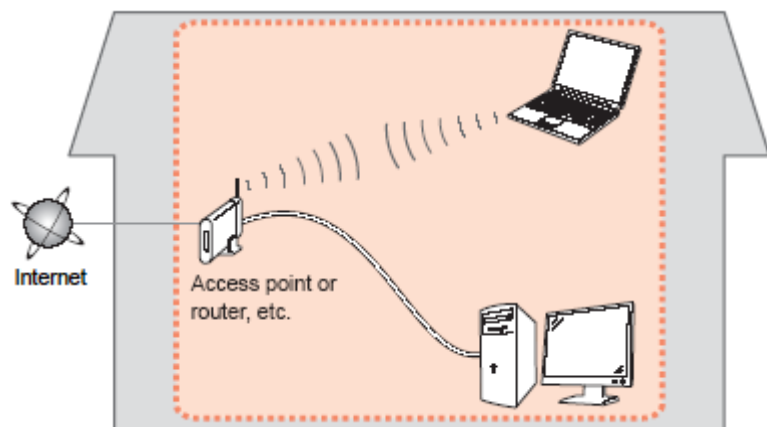
Preparing to Connect the Multifunction To the Network

[<< Previous](#)

[Next >>](#)

Network Requirements

Before connecting the machine to the network, make sure that configuration of the computer and access point or router is complete, and that the computer is connected to the network.



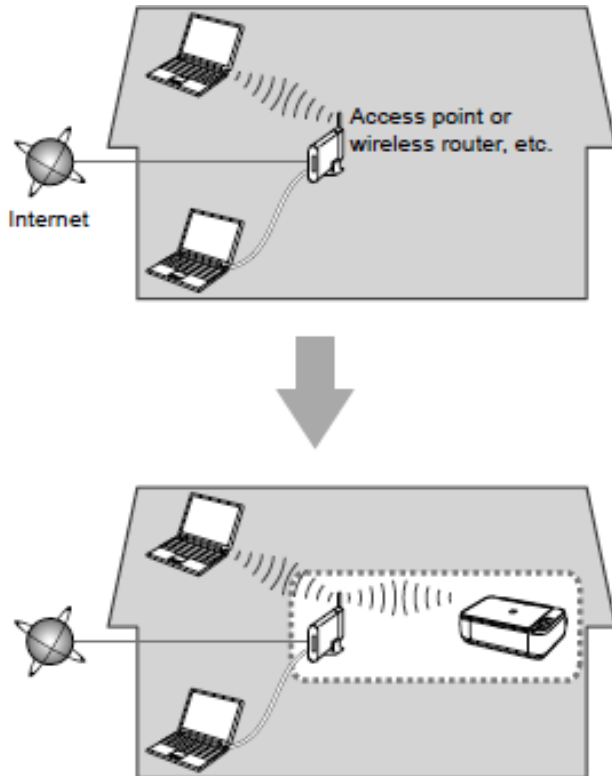
Wireless Connection

Before connecting the machine to the network, the computer needs to be connected to the network. Make sure that configuration of the computer and access point or router is complete.

Preparing to Connect My Multifunction To My Network

[<< Previous](#)

[Next >>](#)



An "Ad-hoc connection," which establishes a direct connection to the computer over a wireless connection without using an access point, is not supported.

A wireless access point or router is required to use your printer on a wireless LAN.

Notes on Network Connection

- The configuration, router functions, setup procedures and security settings of the network device vary depending on your system environment. For details, refer to your device's instruction manual or contact its manufacturer.
- In an office setup, consult your network administrator
- If you connect to a network that is not protected with security measures, there is a risk of disclosing data such as your personal information to a third party.
- Place the machine and computer on the same network segment.

Software Installation

To use the machine by connecting it to a computer, software including the drivers needs to be copied (installed) to the computer's hard disk. The installation process takes about 20 minutes. (The installation time varies depending on the computer environment or the number of application software to be installed.)

IMPORTANT

- Log on as the administrator (or a member of the Administrators group).
- Quit all running applications before installation.
- Do not switch users during the installation process.
- Internet connection may be required during the installation. Connection fees may apply. Consult the internet service provider.
- It may be necessary to restart your computer during the installation process. Follow the on-screen instructions and do not remove the Setup CD-ROM during restarting. The installation resumes once your computer has restarted.
- If the firewall function of your security software is turned on, a warning message may appear that Canon software is attempting to access the network. If such a warning message appears, set the security software to always allow access.


Installing the PIXMA MG8220 to Additional Computers on Your Wireless Network

If your MG8220 has already been set up for on your wireless network , it is only necessary to install the software on the additional computer(s). Connection to the network is confirmed automatically. It is not necessary to make any changes or settings on the printer itself. The printer does not have to be reset or connected via USB cable to the additional computer(s).

Insert the Setup CD-ROM* that came with your printer into your CD-ROM drive and proceed through the easy to follow instructions. Be sure to select **Network Connection**, then **Wireless Connection** on the **Connection Method Selection** screens.

1-2 Connection Method Selection

Select a method to connect the printer.



Select this when using the printer with your computer without using a **USB** cable, or when sharing the printer with other computers. **Access point** or **router** is required.

1-3 Connection Method Selection

Select a method to connect to the **network**.



Select this when connecting the printer to the network without using a cable.

Continue to follow instructions. The connection is confirmed automatically on the **Completion of Connection** screen (Step 1-5). This is shown on the next page.

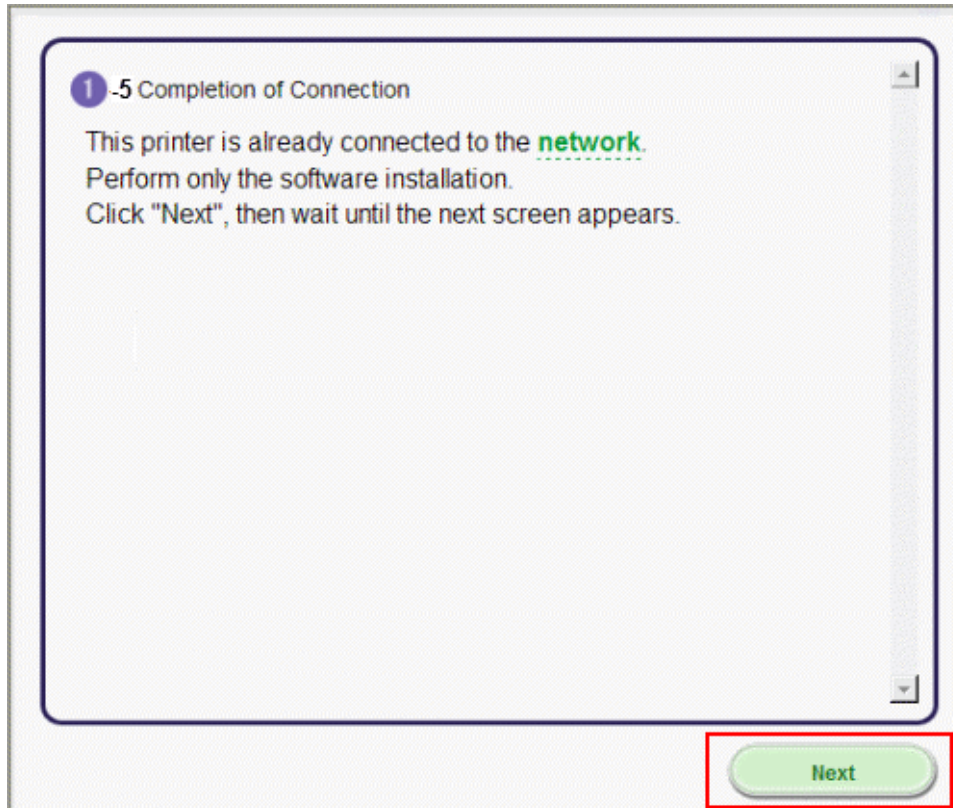
*If you do not have or cannot use the provided CD-ROM, you can still install the printer on your wireless network using the downloaded **Mini Master Setup** file.. [Click here for instructions.](#)

Connecting to the Wireless Network

[<< Previous](#)

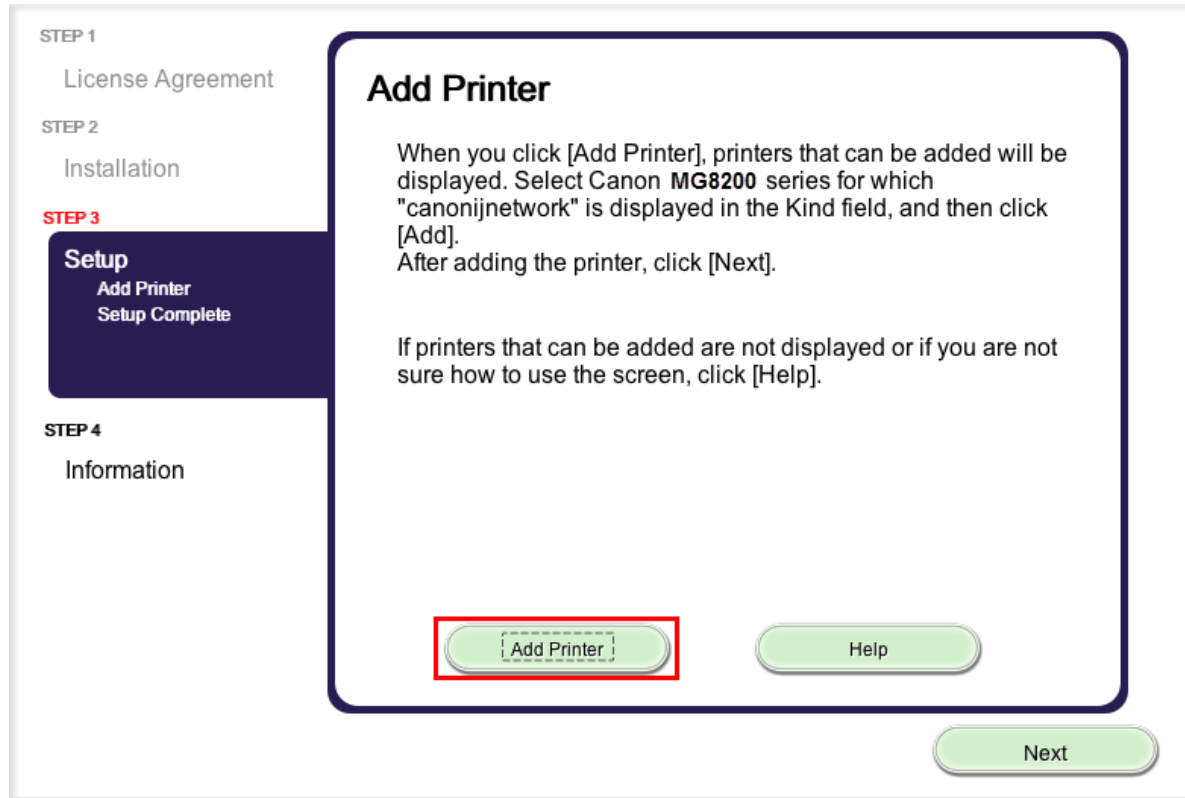
[Next >>](#)

Click **Next** on the **Completion of Connection** screen



Continue to follow instructions for software installation starting on the next page.

Click **Add Printer** on the **Add Printer** window.

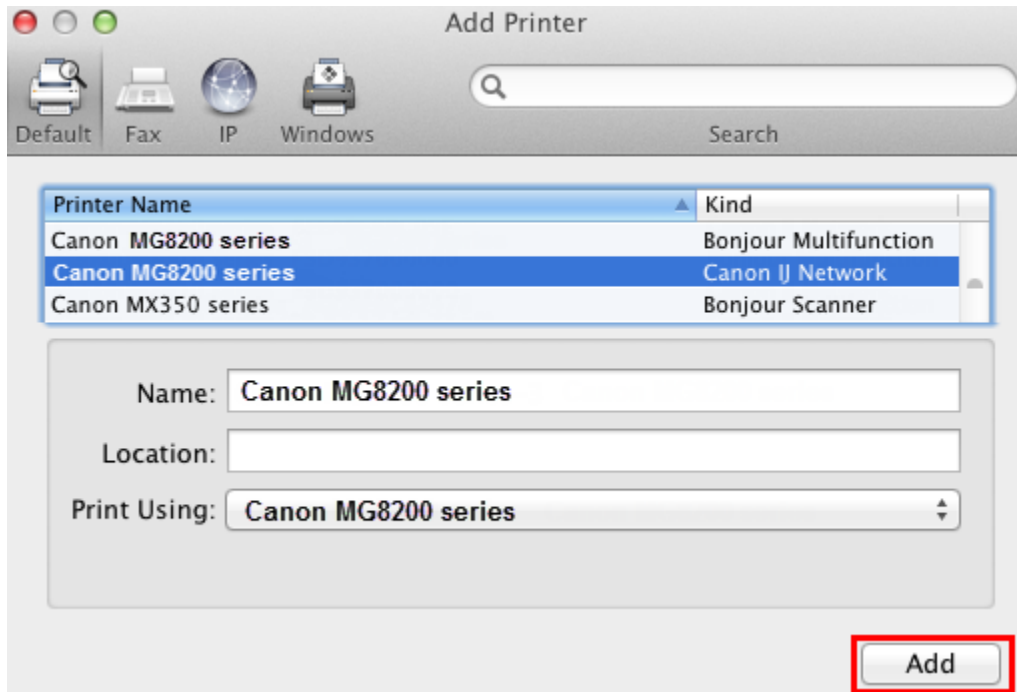


Installing the Drivers & Software

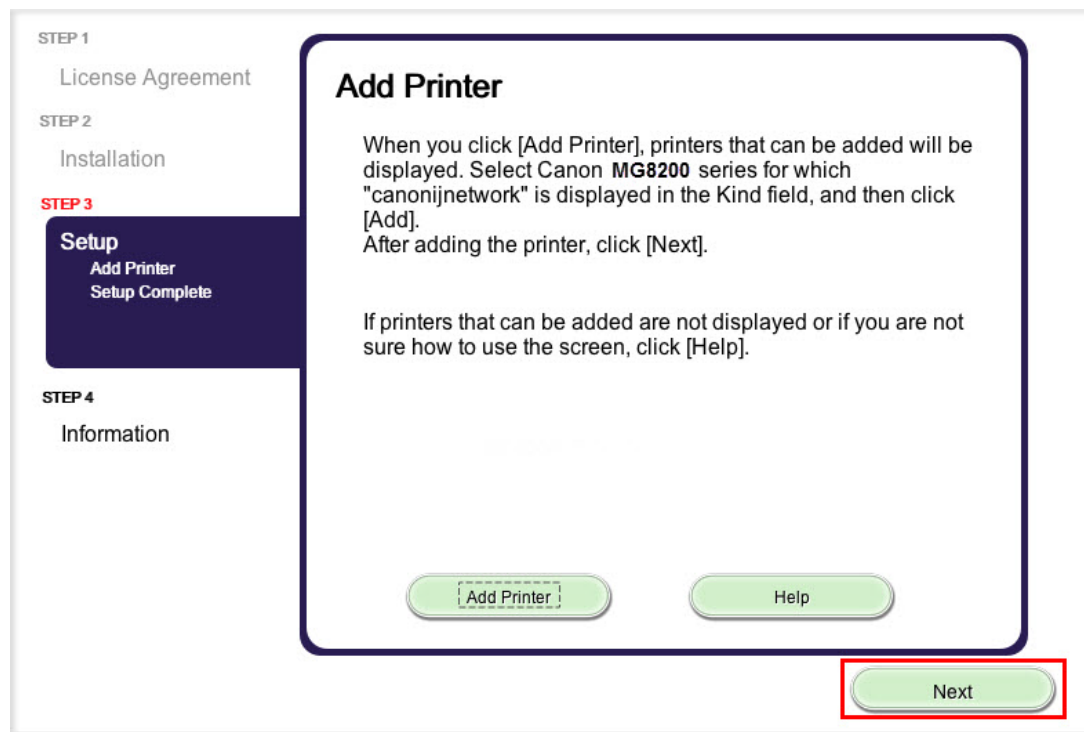
[<< Previous](#)

[Next >>](#)

Select the **Canon MG8200 series** with **Canon IJ Network** listed in the **Kind** column. Click **Add**.



Click **Next** on the **Add Printer** window.

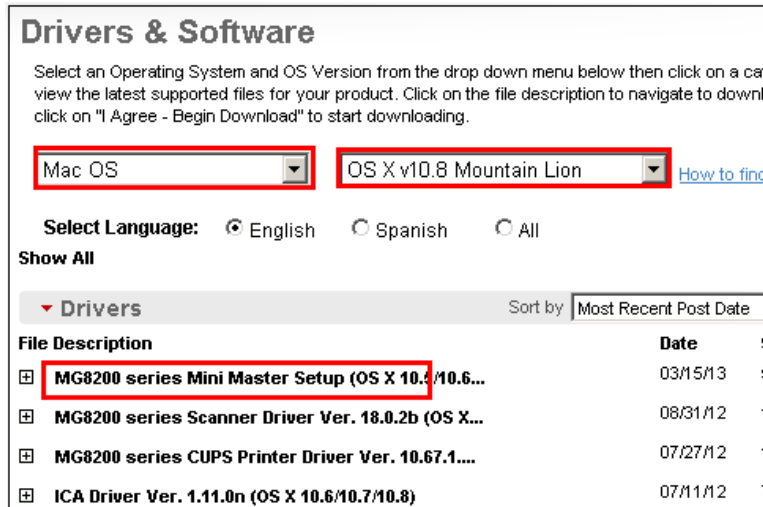


Setup is complete. Continue to follow on-screen instructions to finish and exit the setup program.

Installing the PIXMA MG8220 on Your Wireless Network

If you can't find your CD-ROM, you may download the MG8200 series Mini Master Setup, which includes the same step-by-step installation as the CD-ROM, by following the instructions below:

1. [Click here to access the MG8220 Drivers & Software page.](#)
2. Select the operating system and version of your computer (see example below).
3. Expand the 'Drivers' section, if necessary, by clicking the red triangle.
4. Click on 'MG8200 series Mini Master Setup'.
5. After reading the details and disclaimer, click 'I Agree – Begin Download' and save the file to your computer.
6. Once the download is complete, double-click the file from its download location to begin the installation.



Drivers & Software

Select an Operating System and OS Version from the drop down menu below then click on a category to view the latest supported files for your product. Click on the file description to navigate to download page and click on "I Agree - Begin Download" to start downloading.

Mac OS OS X v10.8 Mountain Lion [How to find](#)

Select Language: English Spanish All

Show All

▼ Drivers Sort by Most Recent Post Date

File Description	Date	Size
<input checked="" type="checkbox"/> MG8200 series Mini Master Setup (OS X 10.4/10.6...)	03/15/13	9 MB
<input checked="" type="checkbox"/> MG8200 series Scanner Driver Ver. 18.0.2b (OS X...)	08/31/12	1 MB
<input checked="" type="checkbox"/> MG8200 series CUPS Printer Driver Ver. 10.67.1....	07/27/12	1 MB
<input checked="" type="checkbox"/> ICA Driver Ver. 1.11.0n (OS X 10.6/10.7/10.8)	07/11/12	7 MB

[Return to Setup instructions](#)