

Installing Your Multifunction to Additional Computers on Your Network

PIXMA MG5420

Windows OS

Installing Your Multifunction to Additional Computers on Your Network

PIXMA MG5420
Windows OS

Preparing to Connect My Multifunction To My Network	3
Network Requirements	3
Notes on Wireless Connection	4
Using the Machine from Additional Computers	5

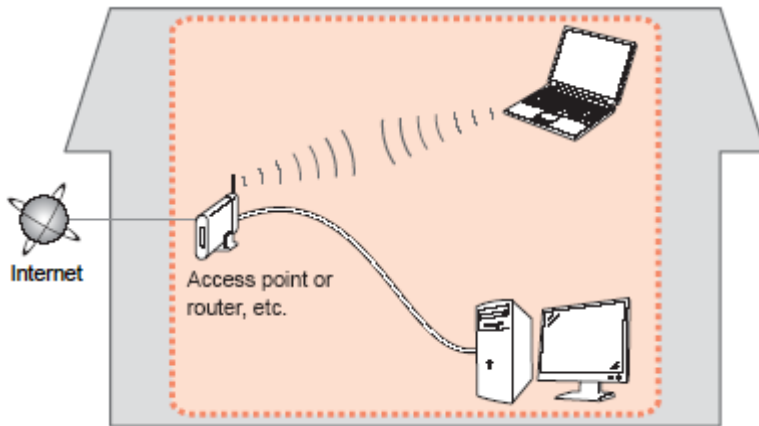
Preparing to Connect My Multifunction To My Network

[<< Previous](#)

[Next >>](#)

Network Requirements

Before connecting the machine to the network, make sure that configuration of the computer and access point or router is complete, and that the computer is connected to the network.



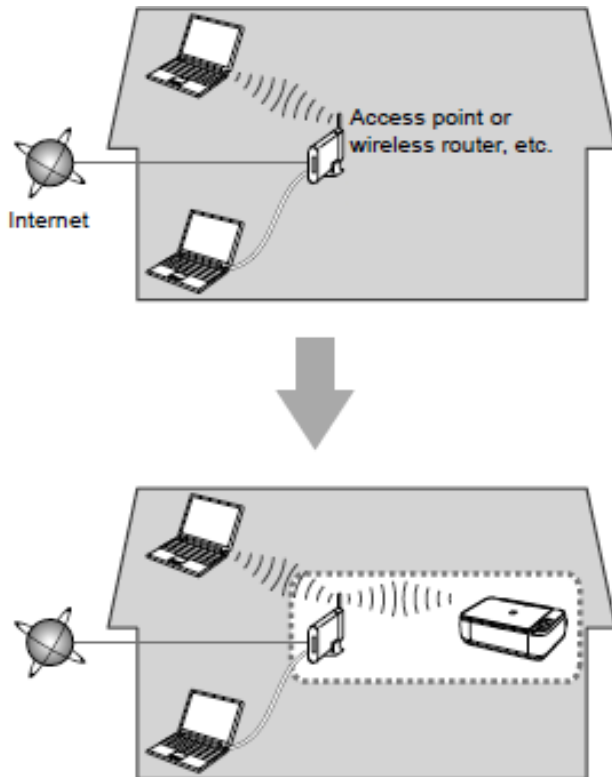
Wireless Connection

Before connecting the machine to the network, the computer needs to be connected to the network. Make sure that configuration of the computer and access point or router is complete.

Preparing to Connect My Multifunction To My Network

[<< Previous](#)

[Next >>](#)



An "Ad-hoc connection," which establishes a direct connection to the computer over a wireless connection without using an access point, is not supported.

A router or access point is required for your printer to be used on a wireless network.

Notes on Network Connection

- The configuration, router functions, setup procedures and security settings of the network device vary depending on your system environment. For details, refer to your device's instruction manual or contact its manufacturer.
- In an office setup, consult your network administrator
- If you connect to a network that is not protected with security measures, there is a risk of disclosing data such as your personal information to a third party.
- If an error message appears or if you have trouble with the network connection, refer to the printed manual: Network Setup Troubleshooting.
- Place the machine and computer on the same network segment.

Software Installation

If the machine is already connected to a wireless connection, it can be used from additional computers on the same network. Only the software needs to be installed. It is not necessary to make any changes or settings on the printer itself.

To use from additional computers

IMPORTANT

- Log on as the administrator (or a member of the Administrators group).
- Quit all running applications before installation.
- If the firewall function of your security software is turned on, a warning message may appear that Canon software is attempting to access the network. If such a warning message appears, set the security software to always allow access.

Installing the PIXMA MG5420 on Additional Computers

If your printer is already on your network, and you wish to use the printer from additional computers, you will need to install the printer software on the other computers. If the network setup has already been completed, the connection is confirmed automatically. A step-by-step walk through of the wireless setup is built in to the installation routine of the software that shipped with your PIXMA.

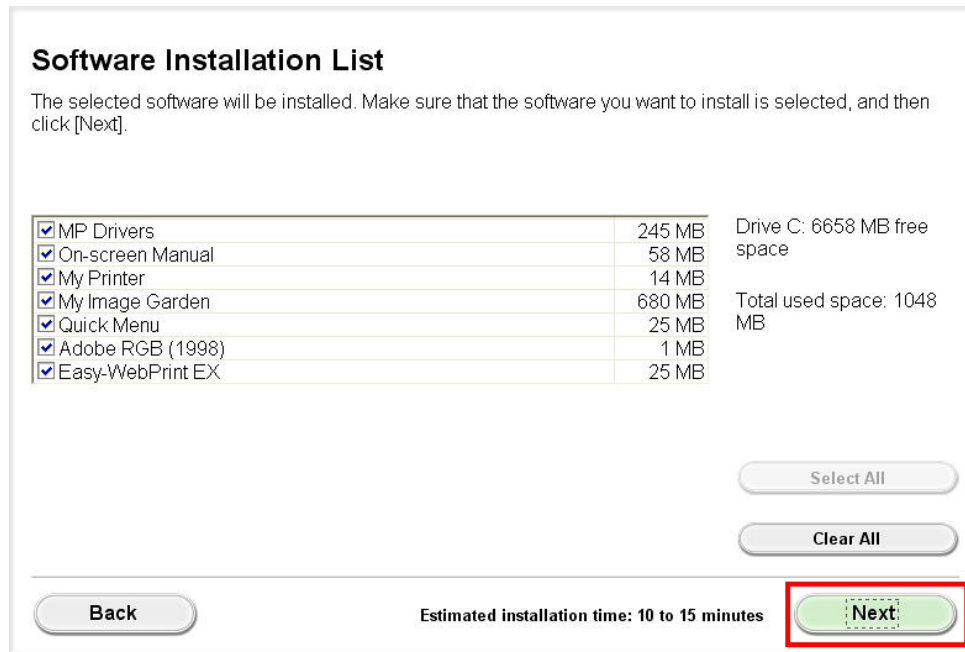
Simply **insert the Setup CD-ROM*** that came with your printer into your CD-ROM drive of each computer you wish to use with the printer and proceed through the easy to follow instructions.



*You can also use the setup file available for download on our web site. [Click here](#) for information.

Installing the Drivers

On the **Software Installation List** screen, select any additional software* you wish to install, then click **Next**. Follow any remaining on-screen instructions to finish and exit the setup program.




***MP Drivers** is pre-selected and required for wireless network connection. We recommend also installing **My Image Garden** and **Quick Menu** to enjoy all the features of the printer.

Note: If using the downloaded MiniMaster file, only the **MP Drivers** are included. **My Image Garden** and **Quick Menu** can be downloaded and installed separately.

Installing the PIXMA MG5420 on Additional Computers

If you can't find your CD-ROM, you may download the MG5400 series Mini Master Setup, which includes the same step-by-step installation as the CD-ROM, by following the instructions below:

1. [Click here to access the MG5420 Drivers & Software page.](#)
2. Select the operating system of your computer (see example below).



The screenshot shows the 'Drivers & Software' page. At the top, there is a heading 'Drivers & Software' and a paragraph of instructions. Below this, there are two dropdown menus: the first is set to 'Windows' and the second is set to 'Windows 8 (x64)'. To the right of the second dropdown is a link 'How to find your'. Below the dropdowns, there are radio buttons for 'Select Language': 'English' (selected), 'Spanish', and 'All'. Below that is a 'Show All' link. A 'Drivers' section is expanded, showing a table of drivers. The table has columns for 'File Description', 'Date', and 'Size'. The third row is highlighted with a red box and contains the text 'MG5400 series Mini Master Setup (Windows 8/8...'. The first two rows are 'MG5400 series MP Drivers Ver. 1.01 (Windows 8/8...' and 'MG5400 series XPS Printer Driver Ver. 5.60a (Wi...'. The table is sorted by 'Most Recent Post Date'.

File Description	Date	Size
MG5400 series MP Drivers Ver. 1.01 (Windows 8/8...	01/31/13	18.74
MG5400 series XPS Printer Driver Ver. 5.60a (Wi...	01/31/13	15.39
MG5400 series Mini Master Setup (Windows 8/8...	09/28/12	24.77

3. Expand the 'Drivers' section by clicking the red triangle, if necessary.
4. Click on the '**MG5400 series Mini Master Setup**' entry.
5. After reading the details and disclaimer, click 'I Agree – Begin Download' and save the file to your computer or network.
6. Once the download is complete, double-click the file from its download location to begin the installation.

[Back to instructions](#)