

Getting Your Multifunction Back On Your Network After A Router Or Network Change

PIXMA MG5420

Macintosh OS

Important

If any of the following situations exist

- You have replaced your Router or Access Point
- You want to use a different wireless network
- Router settings have been changed.

Please complete the following steps to apply the new configuration settings to your multifunction.

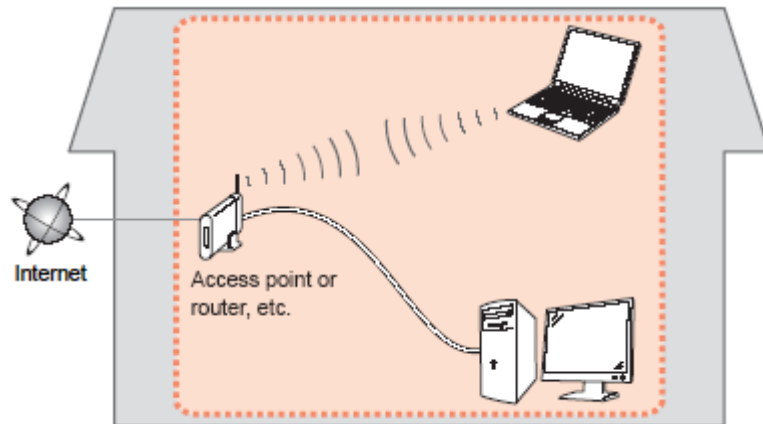
Preparing to Connect My Multifunction To My Network

[<< Previous](#)

[Next >>](#)

Network Requirements

Before connecting the machine to the network, make sure that configuration of the computer and access point or router is complete, and that the computer is connected to the network.



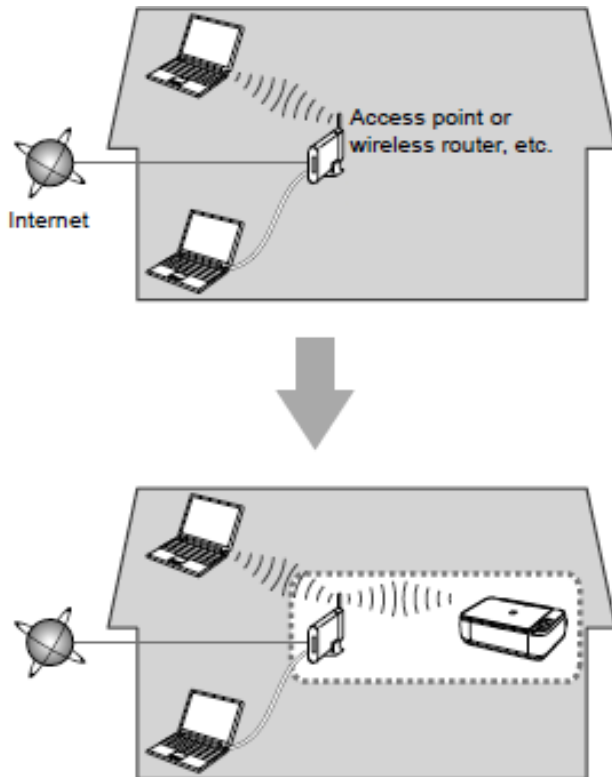
Wireless Connection

Before connecting the machine to the network, the computer needs to be connected to the network. Make sure that configuration of the computer and access point or router is complete.

Preparing to Connect My Multifunction To My Network

[<< Previous](#)

[Next >>](#)



An "Ad-hoc connection," which establishes a direct connection to the computer over a wireless connection without using an access point, is not supported.

A wireless access point or router is required to use your printer on a wireless LAN.

Notes on Network Connection

- The configuration, router functions, setup procedures and security settings of the network device vary depending on your system environment. For details, refer to your device's instruction manual or contact its manufacturer.
- In an office setup, consult your network administrator
- If you connect to a network that is not protected with security measures, there is a risk of disclosing data such as your personal information to a third party.
- If an error message appears or if you have trouble with the network connection, refer to the printed manual: Network Setup Troubleshooting.
- Place the machine and computer on the same network segment.

Software Installation

To use the machine by connecting it to a computer, software including the drivers needs to be copied (installed) to the computer's hard disk. The installation process takes about 20 minutes. (The installation time varies depending on the computer environment or the number of application software to be installed.)

IMPORTANT

- Log on as the administrator (or a member of the Administrators group).
- Quit all running applications before installation.
- Do not switch users during the installation process.
- Internet connection may be required during the installation. Connection fees may apply. Consult the internet service provider.
- It may be necessary to restart your computer during the installation process. Follow the on-screen instructions and do not remove the Setup CD-ROM during restarting. The installation resumes once your computer has restarted.
- If the firewall function of your security software is turned on, a warning message may appear that Canon software is attempting to access the network. If such a warning message appears, set the security software to always allow access.

Installing the PIXMA MG5420 on Your Wireless Network

When you reinstall your printer on your network because of a router or network change, you follow the same procedure as for a first time install. A step-by-step walk through of the wireless setup is built in to the installation routine of the software that shipped with your PIXMA. If you saved the install file when you first installed your MG5420, open the **Downloads** folder and double-click the saved file **mac-MG5400-1_0-mcd.dmg***. Then click the **Setup** icon to begin installation.



Click **Start Setup Again** if the following appears.



*Alternatively you can use the Setup CD-ROM or install the printer using the download file available on our web site. [Click Here for information.](#)

If you are using the saved file to install, [skip ahead to the install instructions, Step 5.](#)

Continue to the next page for instructions if using the Setup CD-ROM.

Installing the Drivers

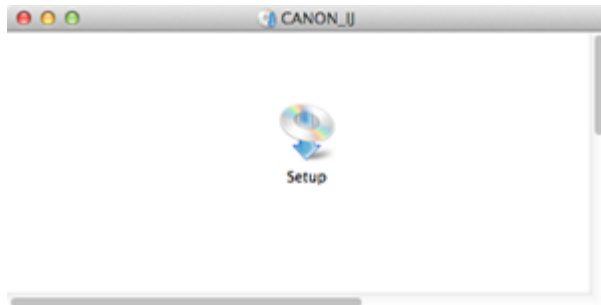
1. Insert the CD-ROM into the computer.



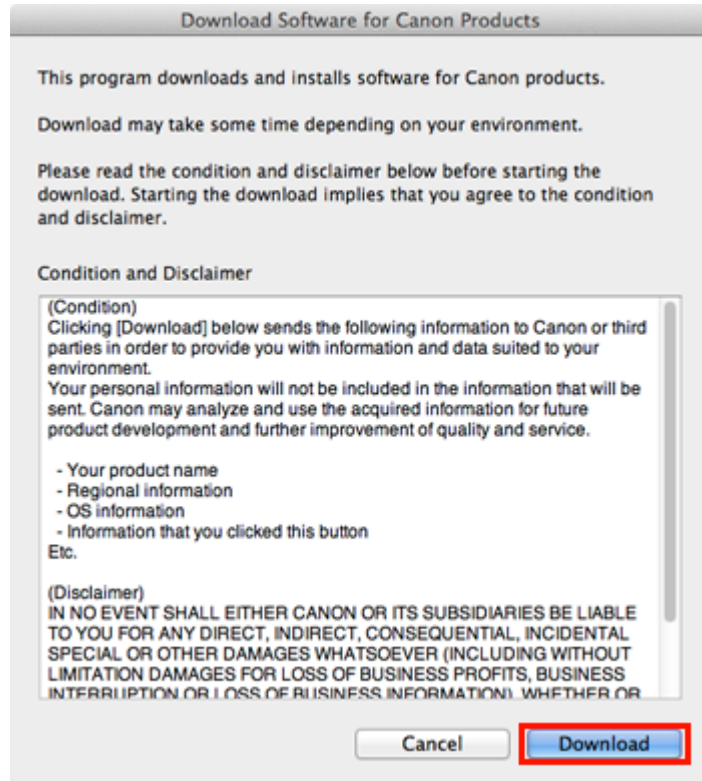
IMPORTANT

If the USB cable is already connected, unplug it. If a message appears on the computer, click **Cancel**.

2. Double-click the **Setup** icon in the CD-ROM folder, then click **Download** in the subsequent window.



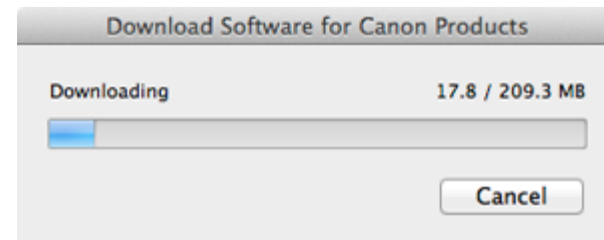
Installing the Drivers



Note:



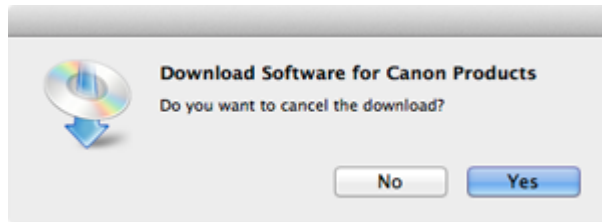
- When the CD-ROM folder does not open automatically, double-click the CD-ROM icon displayed on the desktop.
- The screen below is displayed while downloading.



Installing the Drivers

If you click **Cancel** while downloading, you will see the following screen.

- If you click **No**, you will return to the screen displayed while downloading.
- If you click **Yes**, the download is cancelled. In this case, the files under the download are deleted.



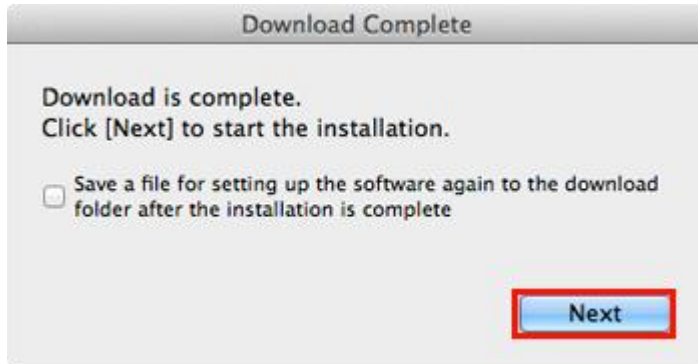
When the download fails, the screen below is displayed.

Click **OK**, and you will go back to the screen for downloading in the procedure .



Installing the Drivers

3. When the download is complete, the screen below is displayed. Click **Next**.



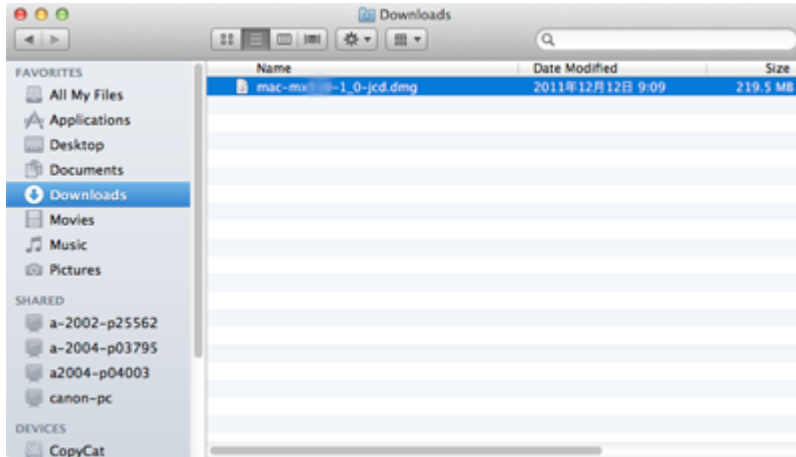
Note

Select "**Save a file for setting up the software again to the download folder after the installation is complete,**" and the file will be saved to the download folder.



Installing the Drivers

You can perform the setup later using this file.

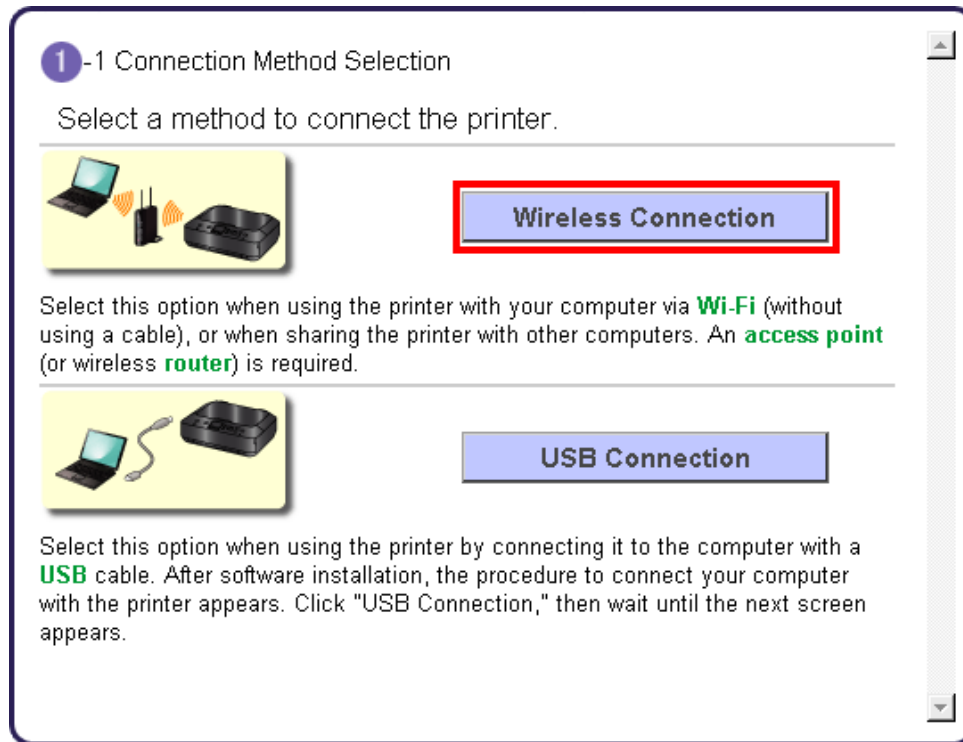


4. In the subsequent screen, enter the administrator name and password. Then click **OK**.



Connecting to the Wireless Network

5. Follow preliminary on-screen instructions. When you get to the **Connection Method Selection** screen (1-1), click **Wireless Connection** .



6. Continue to follow instructions until the **Setup Procedure Selection** screen (3-1) appears. This is shown on the next page

The printer automatically searches for access points that support **WPS** (Wi-Fi Protected Setup)*.

*Unless you are absolutely sure your access point supports WPS and you are familiar with activating this on your access point, **press the Stop button** on the printer's operation panel and click on **Other Methods** on the **Setup Procedure Selection** screen (screenshot shown below)*.


If the **Push Button Method** is not shown on the printer's operation panel (when no WPS access points have been detected), select **Standard setup** on the printer's operation panel, then click **Other Methods** on the **Setup Procedure Selection** screen

3 -1 Setup Procedure Selection


The printer will automatically search for **access points** supporting **WPS (Wi-Fi Protected Setup)**.

Click the method below that matches the screen displayed on your printer.

* If the Push Button Method screen is displayed on the printer
When you are unsure if your access point or **router** supports this technology, tap **To other connection methods**.
When the printer screen changes from left to right, click [here](#)
Proceed to the screen for Standard setup.



[Push Button Method](#)



[Other Methods](#)

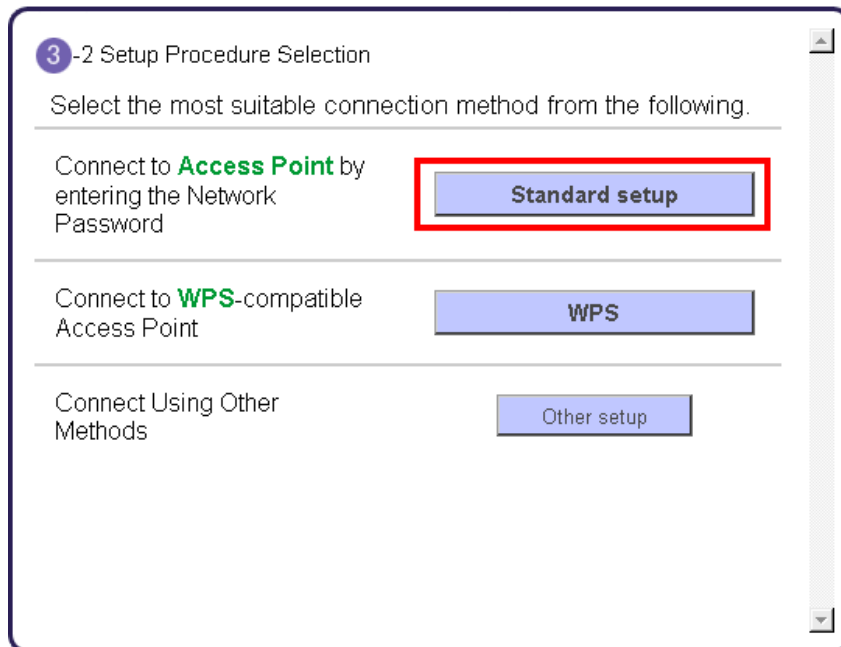
If you selected the **Push Button Method**, follow any remaining instructions to complete setup.

[Click here to skip to software installation](#)

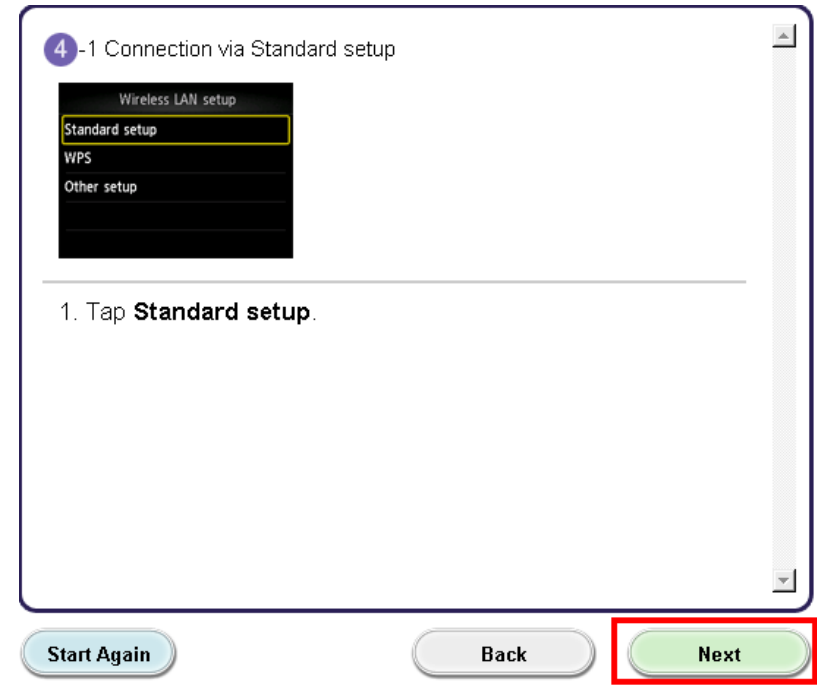
If you selected **Other Methods**, please continue to the next page for important information

For Standard setup only

Select **Standard setup** on the **Setup Procedure Selection** screen (3-2)



Follow the instruction then click **Next** on the **Connection via Standard setup** (4-1) screen.

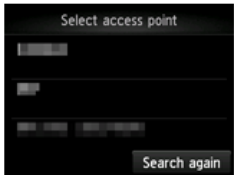


Continue to next page before proceeding any further with setup

Follow On-screen instructions. When you get to Step 4-2 and later in Step 4-4 (screens shown below) you will need to know SSID and password information*

Step 4-2

4-2 Connection via Standard setup



1. Tap your **access point**.
If another screen appears, refer to "Troubleshooting" on the right.


If you don't know your access point name

▶▶▶ **Confirm the access point name (automatic display)**

Select the automatically displayed access point name in the printer screen.

Step 4-4

4-4 Connection via Standard setup



1. Enter the **network password (WEP key or passphrase)**.
Character entry is case-sensitive so be sure to confirm. Click [here](#) for details on how to enter characters and how to change the character type.

If you don't know the network password for your **access point**

▶▶▶ **Confirm the network password (automatic display)**

Enter the automatically displayed network password in the printer screen.

2. Tap **Apply**.

***Unless you are absolutely certain of this information, please continue to the next page for information on locating / verifying this information before entering on the machine.**

Continue to follow the on-screen instructions. Click **Next** when the **Completion of Connection** screen (4-7) appears.

Connecting to the Wireless Network

[<< Previous](#)

[Next >>](#)

If you don't know your Access Point / Router name or SSID*, or the Passphrase or Network key for your wireless network, you can find this information during Standard setup using the Setup CD-ROM or the downloaded file (Mini Master Setup).

*The terms 'SSID' and 'AccessPoint / Router' refer to a name used to identify the specific Access Point or Router. 'Passphrase' and 'Network Key' refer to a password required to prevent unauthorized access to communication.

Look for the **Confirm the access point name (automatic display)** or the **Confirm the network key (automatic display)** buttons during the setup procedure.



Clicking either of these buttons will give the needed information. On a Mac OS X system you may need to click 'Allow' on one or more windows after clicking either of the above buttons. See example below of the Wireless Lan Setup Information window. (appearance varies depending on Operating System). Use the provided information when selecting the Access Point / Router and for entering the Network Key (Steps 4-2 and 4-4 on the previous page).

Below is information about the access points detected from your computer.

Wireless LAN Setup Information:

Access Point Na...	Network Key (Encryption Key)
YourNetName	YourPassPhraseorNetKey

OK

8. Network setup is complete. Continue to follow any remaining On-screen instructions to install the software. On the **Software Installation List** screen, select any software to be installed. **MP Drivers** is required for the printer to be able to print and scan and cannot be de-selected. **MY Image Garden**, **ScanGear** and **Quick Menu*** are highly recommended to take full advantage of your printer's features.

Software Installation List

The selected software will be installed. Make sure that the software you want to install is selected, and then click [Next].

You need to install all the software below to use all functions of this printer.

<input checked="" type="checkbox"/>	MP Drivers	180 MB
<input type="checkbox"/>	ScanGear	80 MB
<input type="checkbox"/>	On-screen Manual	280 MB
<input type="checkbox"/>	My Image Garden	680 MB
<input type="checkbox"/>	Quick Menu	25 MB
<input checked="" type="checkbox"/>	Canon IJ Network Tool	20 MB
<input type="checkbox"/>		
<input type="checkbox"/>		
<input type="checkbox"/>		
<input type="checkbox"/>		
<input type="checkbox"/>		
<input type="checkbox"/>		
<input type="checkbox"/>		
<input type="checkbox"/>		
<input type="checkbox"/>		
<input type="checkbox"/>		
<input type="checkbox"/>		
<input type="checkbox"/>		
<input type="checkbox"/>		
<input type="checkbox"/>		
<input type="checkbox"/>		
<input type="checkbox"/>		
<input type="checkbox"/>		

Drive Lion 29316 MB free space

Total used space: 200 MB

Select All

Clear All

Back

Next

***Note:** If you are using the downloaded **Mini Master Setup** file, only the **MP Drivers** and **Canon IJ Network Tool** will be installed.

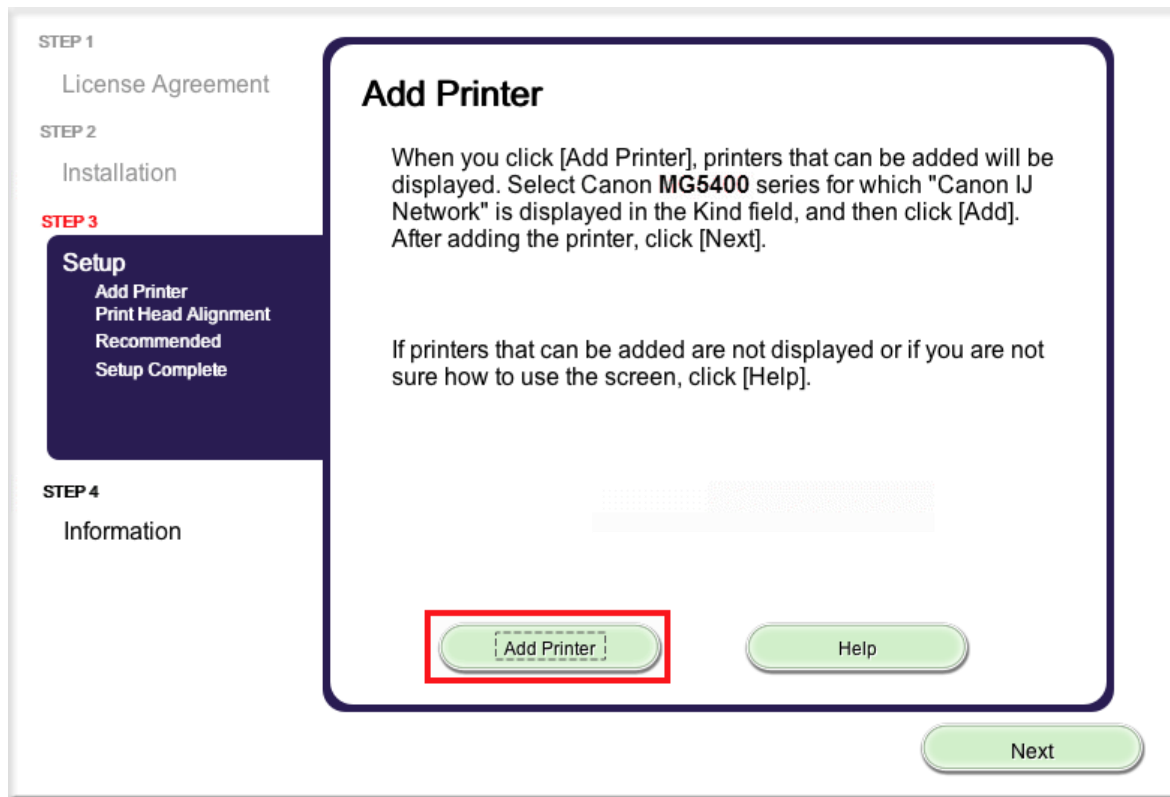
You can download the additional software applications from the **Software** section of the **Drivers & Software** page where you obtained the Mini Master setup file.

Continue to follow on-screen instructions until the **Add Printer** screen appears. This screen is shown on the next page.

Add the Printer

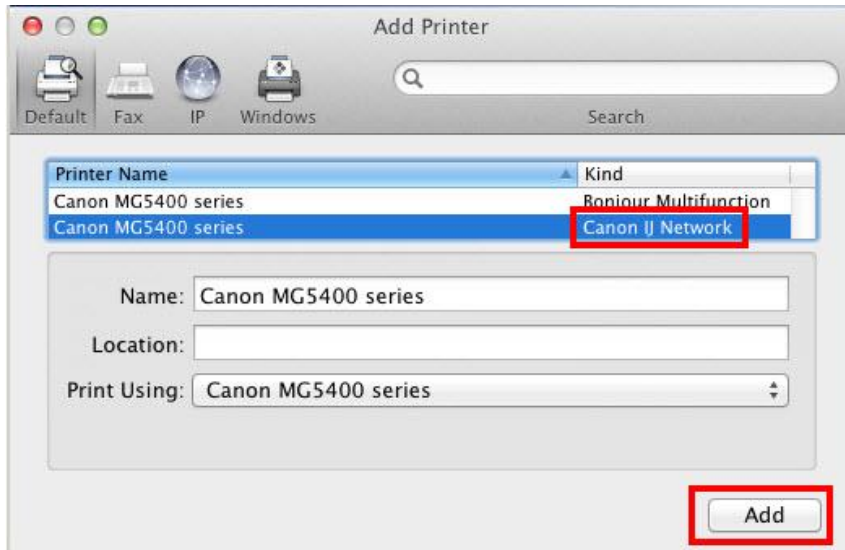
Add the Printer

1. Click **Add Printer** on the **Add Printer** Screen



Add the Printer

2. Select **Canon MG5400 series** with **Canon IJ Network** listed in the **Kind*** column. Click **Add**.



Note:

If the machine is not detected, make sure of the following:

- The machine is turned on.
- The firewall function of any security software is turned off.
- The computer is connected to the access point.

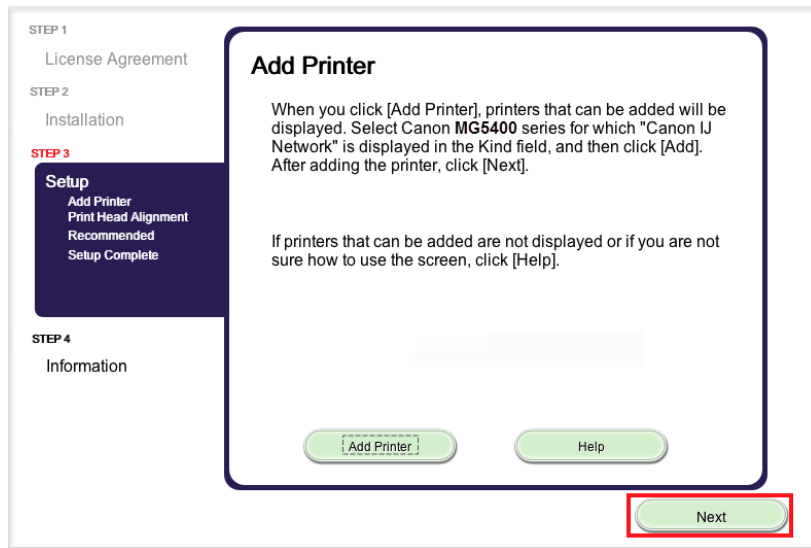
* CAUTION

If you will be installing the Canon printer driver on Mac OS X and using the printer through a network connection, you can select **Bonjour** or **Canon IJ Network** in the **Add Printer** dialog.

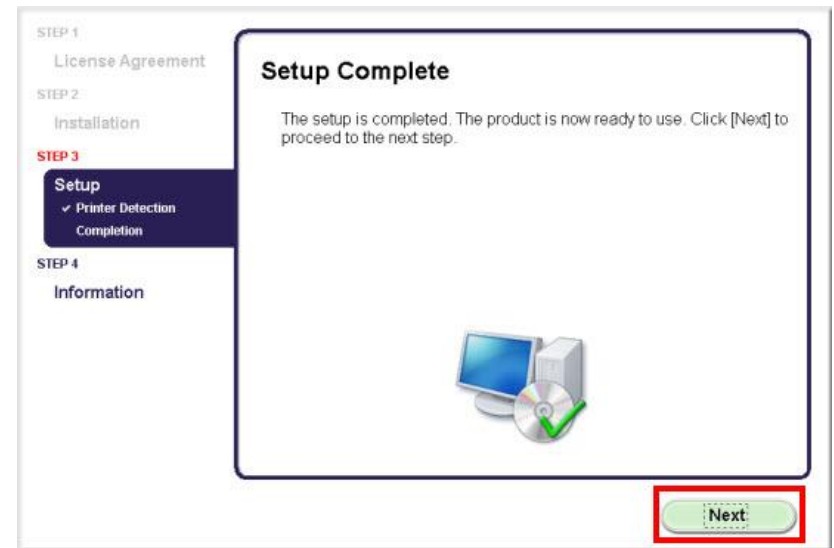
If **Bonjour** is selected, remaining ink level messages may differ from those indicated by **Canon IJ Network**. Canon recommends you to use **Canon IJ Network** for printing.

Installing the Drivers

3. Click **Next** on the **Add Printer** screen.



5. Click **Next** on the **Setup Complete** screen..



Setup is complete. Follow any remaining on-screen instructions to finish and exit the setup program

Installing the Drivers using downloaded files

If you can't find your CD-ROM, you can set up the printer by downloading and installing the **MG5400 series Mini Master Setup**, which includes the same step-by-step installation as the CD-ROM. Follow the instructions below:

1. [Click here to access the MG5420 Drivers & Software page.](#)
2. Select the operating system and version of your computer (see example below).
3. Expand the 'Drivers' section, if necessary, by clicking the red triangle.
4. Click the file name, then click 'I Agree – Begin Download' and save the file to your computer.

Drivers & Software

Select an Operating System and OS Version from the drop down menu below then click on a category to view the latest supported files for your product. Click on the file description to navigate to download. Click on "I Agree - Begin Download" to start downloading.

Mac OS OS X v10.8 Mountain Lion [How to find](#)

Select Language: English Spanish All

Show All

▼ Drivers Sort by Most Recent Post Date

File Description	Date	Size
MG5400 series Mini Master Setup (OS X 10.5/10.6/10.7/10.8)	11/02/12	5 MB
ICA Driver Ver. 2.1.1m (OS X 10.6/10.7/10.8)	09/14/12	1 MB
MG5400 series CUPS Printer Driver Ver. 10.67.2....	09/14/12	1 MB
MG5400 series Scanner Driver Ver. 19.0.0a (OS X...	09/14/12	2 MB

Continue to next page.

Installing the Drivers using downloaded files

5. Once the download is complete, double-click the file from its download location to begin the installation.
6. Click the **Setup** icon



7. Follow the same instructions as installing from the CD-ROM beginning with [Step 5 \(Connection Method Selection\)](#).