

# Installing Your Multifunction to Additional Computers on Your Network

PIXMA MG3220

Windows OS

# Installing Your Multifunction to Additional Computers on Your Network

PIXMA MG3220  
Windows OS

<b>Preparing to Connect My Multifunction To My Network</b>	<b>3</b>
Network Requirements	3
Notes on Wireless Connection	4
<b>Using the Machine from Additional Computers</b>	<b>5</b>

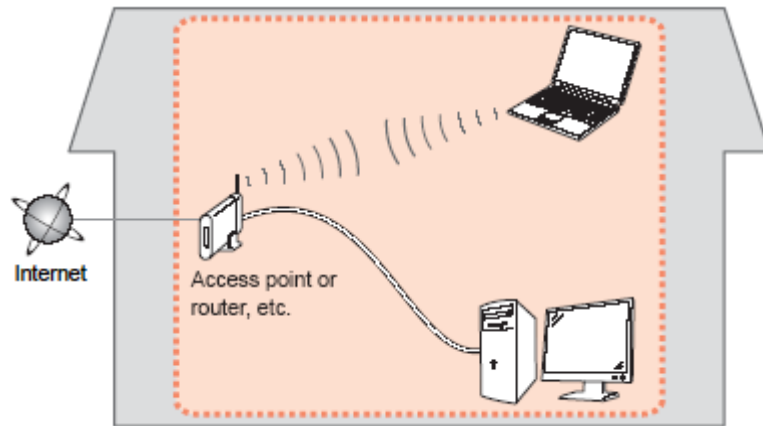
# Preparing to Connect My Multifunction To My Network

[<< Previous](#)

[Next >>](#)

## Network Requirements

Before connecting the machine to the network, make sure that configuration of the computer and access point or router is complete, and that the computer is connected to the network.



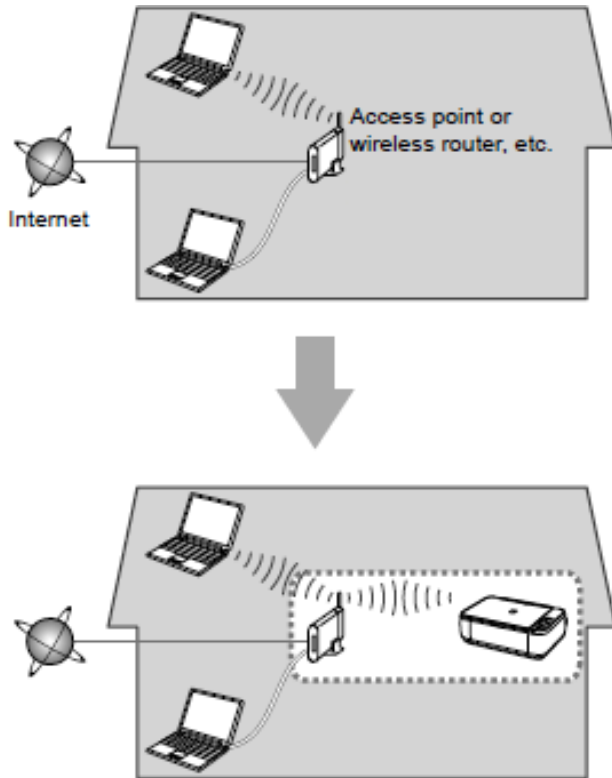
## Wireless Connection

Before connecting the machine to the network, the computer needs to be connected to the network. Make sure that configuration of the computer and access point or router is complete.

# Preparing to Connect My Multifunction To My Network

[<< Previous](#)

[Next >>](#)



An "Ad-hoc connection," which establishes a direct connection to the computer over a wireless connection without using an access point, is not supported.

**A wireless Access Point or Router is required to use your printer on a wireless LAN**

## Notes on Network Connection

- The configuration, router functions, setup procedures and security settings of the network device vary depending on your system environment. For details, refer to your device's instruction manual or contact its manufacturer.
- In an office setup, consult your network administrator
- If you connect to a network that is not protected with security measures, there is a risk of disclosing data such as your personal information to a third party.
- If an error message appears or if you have trouble with the network connection, refer to the printed manual: Network Setup Troubleshooting.
- Place the machine and computer on the same network segment.

## Software Installation

To use the machine by connecting it to a computer, software including the drivers needs to be copied (installed) to the computer's hard disk. The installation process takes about 20 minutes. (The installation time varies depending on the computer environment or the number of application software to be installed.)

### **IMPORTANT**

- Log on as the administrator (or a member of the Administrators group).
- Quit all running applications before installation.
- Do not switch users during the installation process.
- Internet connection may be required during the installation. Connection fees may apply. Consult the internet service provider.
- It may be necessary to restart your computer during the installation process. Follow the on-screen instructions and do not remove the Setup CD-ROM during restarting. The installation resumes once your computer has restarted.
- If the firewall function of your security software is turned on, a warning message may appear that Canon software is attempting to access the network. If such a warning message appears, set the security software to always allow access.

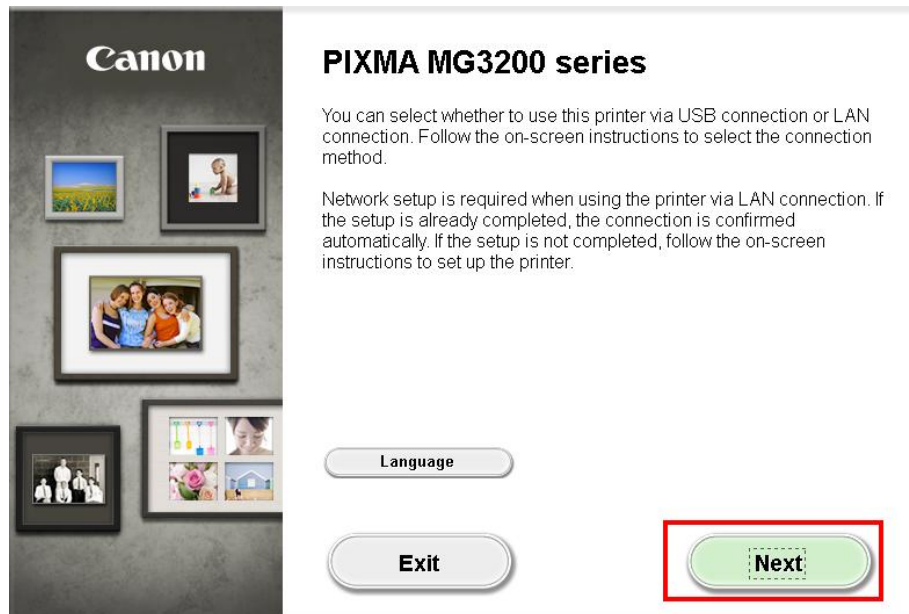
## Installing the PIXMA MG3220 on additional computers on Your Wireless Network

If the machine is already connected to a wireless network, it can be used from additional computers on the same network. Connection to the network is confirmed automatically. Only the software needs to be installed. It is not necessary to make any changes or settings on the printer itself.

**\*Insert the Setup CD-ROM** that came with your printer into your CD-ROM drive and proceed through the easy to follow instructions.

\*If you don't have or cannot use the Setup CD-ROM, you can still install the printer using a downloaded file. [Click here for information.](#)

Click **Next** on the following screen



Continue to follow on-screen instructions.

On the **Software Installation List** select any additional\* software to install and click **Next**.

\***MP Drivers** is required for installation and cannot be deselected. In addition, we recommend installing **My Image Garden** and **Quick Menu** in order to take full advantage of your printer's features.

## Software Installation List

The selected software will be installed. Make sure that the software you want to install is selected, and then click [Next].

<input checked="" type="checkbox"/> MP Drivers	245 MB
<input checked="" type="checkbox"/> On-screen Manual	58 MB
<input checked="" type="checkbox"/> My Printer	14 MB
<input checked="" type="checkbox"/> My Image Garden	680 MB
<input checked="" type="checkbox"/> Quick Menu	25 MB
<input checked="" type="checkbox"/> Adobe RGB (1998)	1 MB
<input checked="" type="checkbox"/> Easy-WebPrint EX	25 MB
<input type="checkbox"/> XPS Driver	130 MB

Drive C: 398030 MB free space  
Total used space: 1048 MB

[Select All](#)

[Clear All](#)

[Back](#) Estimated installation time: 10 to 15 minutes [Next](#)

\*If you are using the downloaded '**Mini Master setup**' file to install the printer, only the **MP Drivers** will be installed.

Additional software can be downloaded separately.

The software can be found in the **Software** section of **Drivers & Software** (the same page where you downloaded the Mini Master setup file)

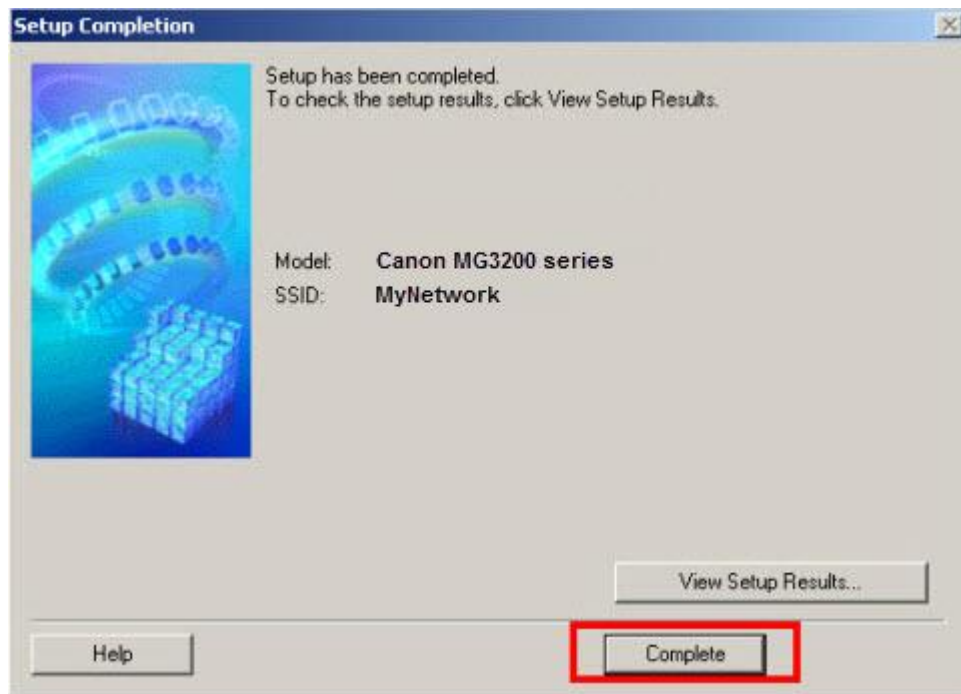
# Installing the Drivers & Software

[<< Previous](#)

[Next >>](#)

Continue to follow on-screen instructions.

Click **Complete** on the **Setup Completion** screen.





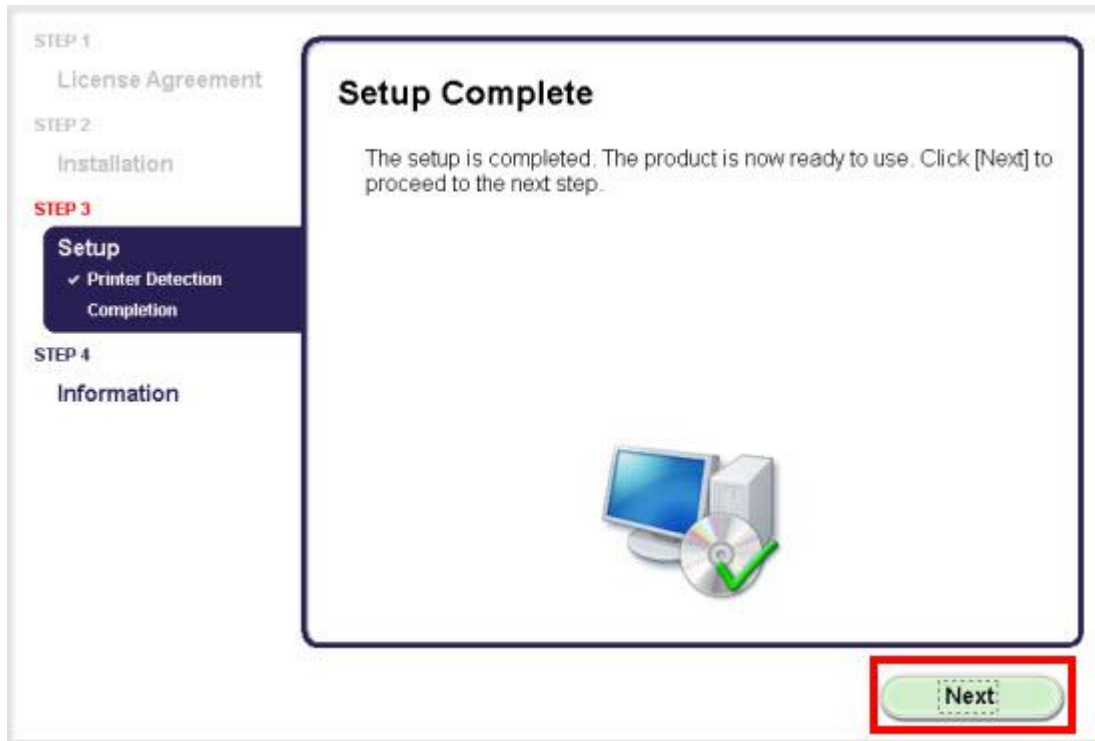
# Installing the Drivers & Software

[<< Previous](#)

[Next >>](#)

Continue to follow on-screen instructions.

Click **Next** on the following screen.



Continue to follow any remaining on-screen instructions to finish and exit the setup program.

## Installing the PIXMA MG3220 on Your Wireless Network

If you can't find your CD-ROM, you may download the MG3200 series Mini Master Setup, which includes the same step-by-step installation as the CD-ROM, by following the instructions below:

1. [Click here to access the MG3220 Drivers & Software page.](#)
2. Select the operating system of your computer in the dropdown lists (see example below).
3. Expand the 'Drivers' section, if necessary, by clicking the red triangle.
4. Click on the 'MG3200 series Mini Master Setup' entry.
5. After reading the license agreement, click 'I Agree – Begin Download' and save the file to your computer.
6. Once the download is complete, double-click the file from its download location to begin the installation.
7. Follow the same instructions as you would if using the Setup CD-ROM. [Click here to go to instructions.](#)

### Drivers & Software

Select an Operating System and OS Version from the drop down menu below then click on view the latest supported files for your product. Click on the file description to navigate to click on "I Agree - Begin Download" to start downloading.

Windows  Windows 7 (x64)  [How to](#)

Select Language:  English  Spanish  All

Show All

▼ Drivers		Sort by	Most Recent Post D
File Description			Date
<input type="checkbox"/> MG3200 series MP Drivers Ver. 1.02 (Windows 8/8...			01/31/13
<input type="checkbox"/> MG3200 series XPS Printer Driver Ver. 5.60a (Wi...			01/31/13
<input type="checkbox"/> <b>MG3200 series Mini Master Setup (Windows 7/8 x6...</b>			09/28/12