

# **Installing Your Multifunction to Additional Computers on Your Network**

**PIXMA MG3220**

**Macintosh OS**

# Installing Your Multifunction to Additional Computers on Your Network

PIXMA MG3220  
Macintosh OS

<b>Preparing to Connect My Multifunction To My Network</b>	<b>3</b>
Network Requirements	3
Notes on Wireless Connection	4
<b>Using the Machine from Additional Computers</b>	<b>5</b>

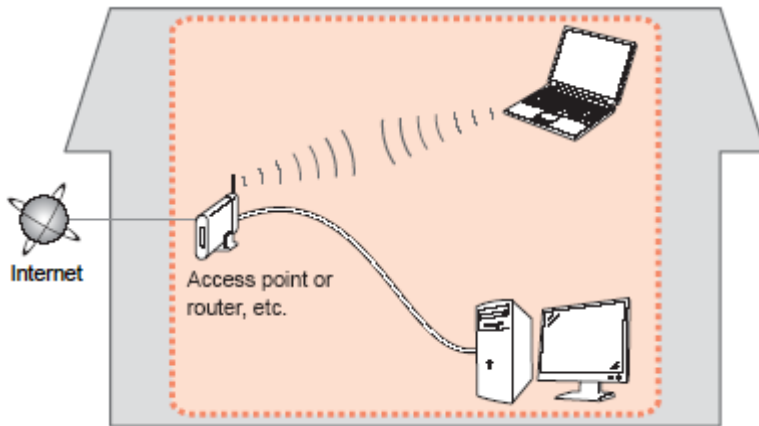
# Preparing to Connect My Multifunction To My Network

[<< Previous](#)

[Next >>](#)

## Network Requirements

Before connecting the machine to the network, make sure that configuration of the computer and access point or router is complete, and that the computer is connected to the network.



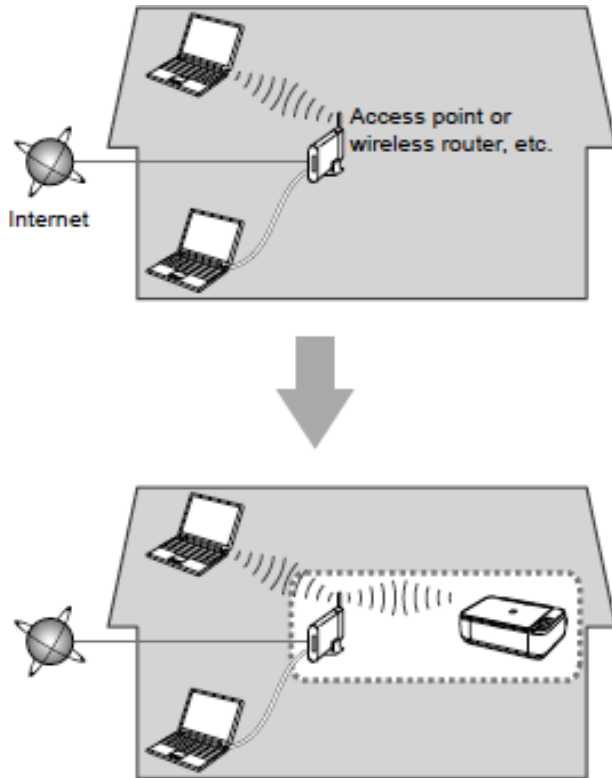
## Wireless Connection

Before connecting the machine to the network, the computer needs to be connected to the network. Make sure that configuration of the computer and access point or router is complete.

# Preparing to Connect My Multifunction To My Network

[<< Previous](#)

[Next >>](#)



An "Ad-hoc connection," which establishes a direct connection to the computer over a wireless connection without using an access point, is not supported.

**A wireless Access Point or Router is required to use your printer on a wireless LAN**

## Notes on Network Connection

- The configuration, router functions, setup procedures and security settings of the network device vary depending on your system environment. For details, refer to your device's instruction manual or contact its manufacturer.
- In an office setup, consult your network administrator
- If you connect to a network that is not protected with security measures, there is a risk of disclosing data such as your personal information to a third party.
- If an error message appears or if you have trouble with the network connection, refer to the printed manual: Network Setup Troubleshooting.
- Place the machine and computer on the same network segment.

## Software Installation

If the machine is already connected to a wireless network, it can be used from additional computers on the same network. Connection to the network is confirmed automatically. Only the software needs to be installed. It is not necessary to make any changes or settings on the printer itself.

1. Insert the CD-ROM\* into the computer.

\*Alternatively, you can download and run the **Mini Master Setup** file from our website.

[Click here for information](#)

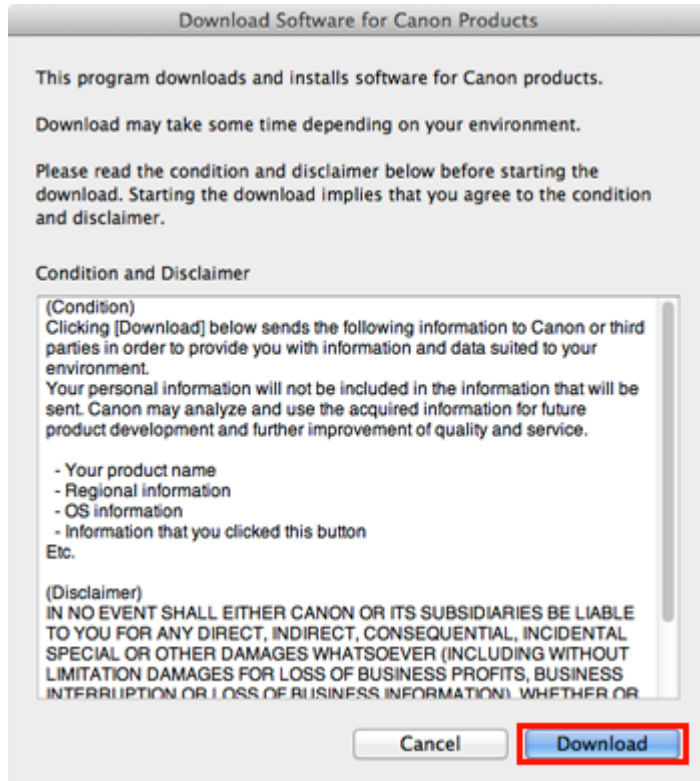
### IMPORTANT

If the USB cable is already connected, unplug it. If a message appears on the computer, click **Cancel**.

2. Double-click the **Setup** icon in the CD-ROM folder, then click **Download** in the subsequent window.



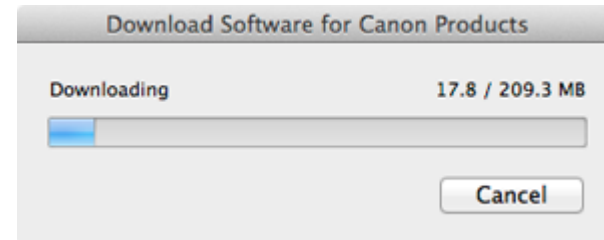
# Installing the Drivers & Software



## REFERENCE



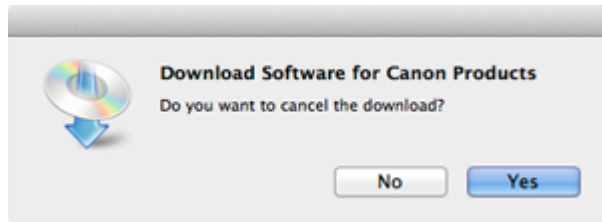
- When the CD-ROM folder does not open automatically, double-click the CD-ROM icon displayed on the desktop.
- The screen below is displayed while downloading.



# Installing the Drivers & Software

If you click **Cancel** while downloading, you will see the following screen.

- If you click **No**, you will return to the screen displayed while downloading.
- If you click **Yes**, the download is cancelled. In this case, the files under the download are deleted.



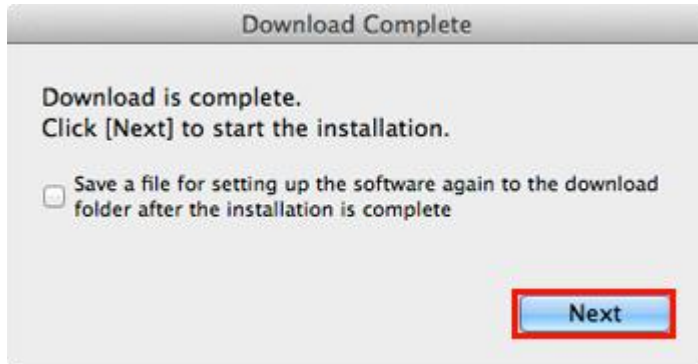
When the download fails, the screen below is displayed.

Click **OK**, and you will go back to the screen for downloading in the procedure .

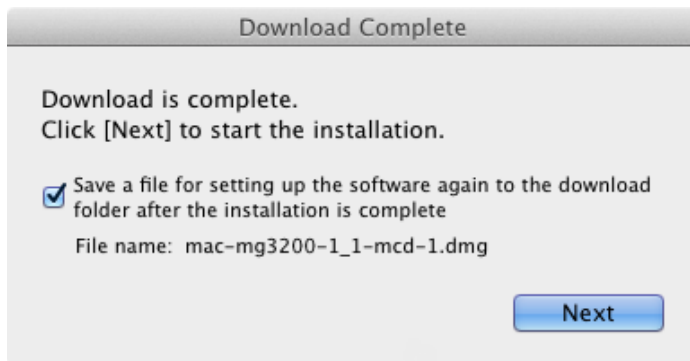


# Installing the Drivers & Software

3. When the download is complete, the screen below is displayed. Click **Next**.



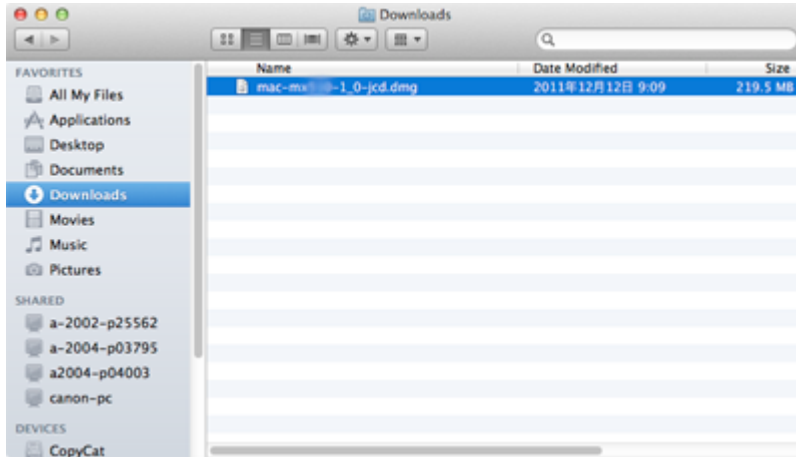
**Note:** Select "Save a file for setting up the software again to the download folder after the installation is complete," and the file will be saved to the download folder.





# Installing the Drivers & Software

You can perform the setup later using this file.

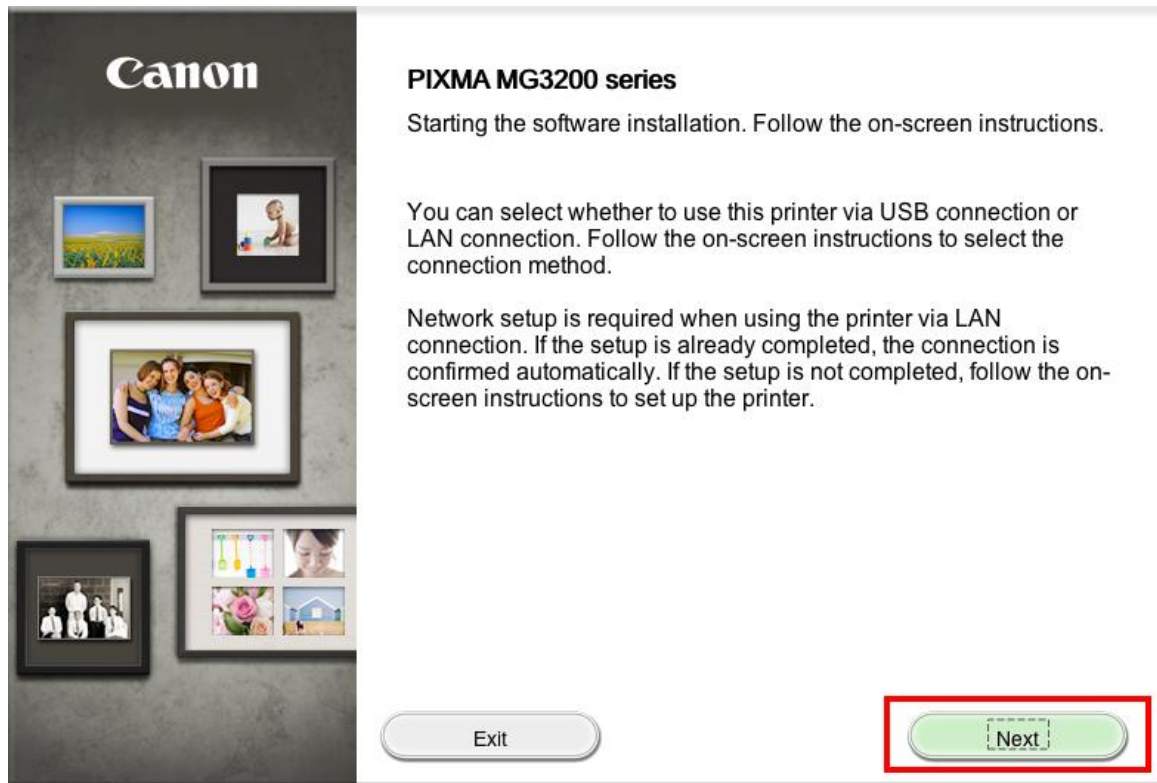


4. In the subsequent screen, enter the administrator name and password. Then click **OK**.



## Installing the PIXMA MG3220 on Additional Computers

Click **Next** on the following screen.



# Installing the Drivers & Software

[<< Previous](#)

[Next >>](#)

On the **Software Installation List** select any additional\* software to install and click **Next**.

\***MP Drivers** and **Canon IJ Network Tool** are required for installation and cannot be deselected. In addition, we recommend installing **My Image Garden** and **Quick Menu** in order to take full advantage of your printer's features.

\*If you are using the downloaded '**Mini Master setup**' file to install the printer, only the **MP Drivers** and **Canon IJ Network Tool** will be installed. Additional software can be downloaded separately. The software can be found in the **Software** section of **Drivers & Software** (the same page where you downloaded the Mini Master setup file)

### Software Installation List

The selected software will be installed. Make sure that the software you want to install is selected, and then click [Next].

You need to install all the software below to use all functions of this printer.

<input checked="" type="checkbox"/>	MP Drivers	180 MB
<input type="checkbox"/>	ScanGear	80 MB
<input type="checkbox"/>	On-screen Manual	280 MB
<input type="checkbox"/>	My Image Garden	680 MB
<input type="checkbox"/>	Quick Menu	25 MB
<input checked="" type="checkbox"/>	Canon IJ Network Tool	20 MB

Drive Lion 29895 MB free space

Total used space: 200 MB

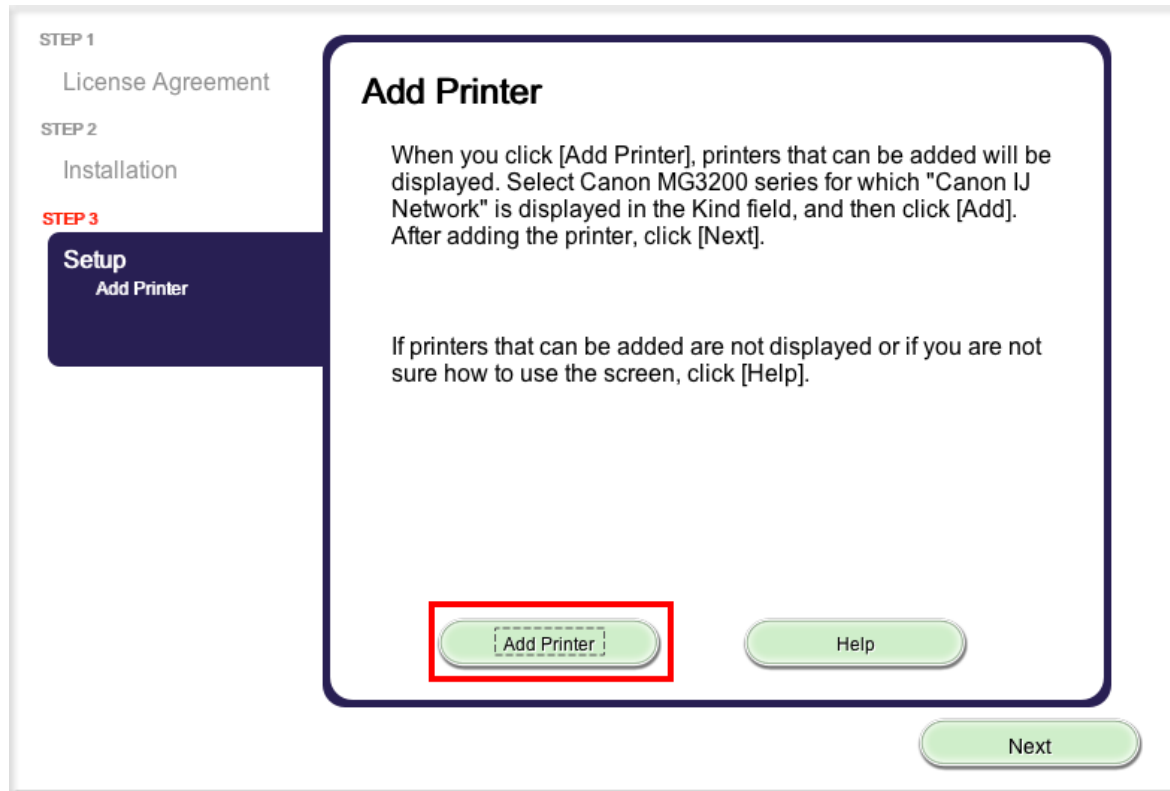
Select All

Clear All

Back

Next

Click **Add Printer** on the **Add Printer** screen

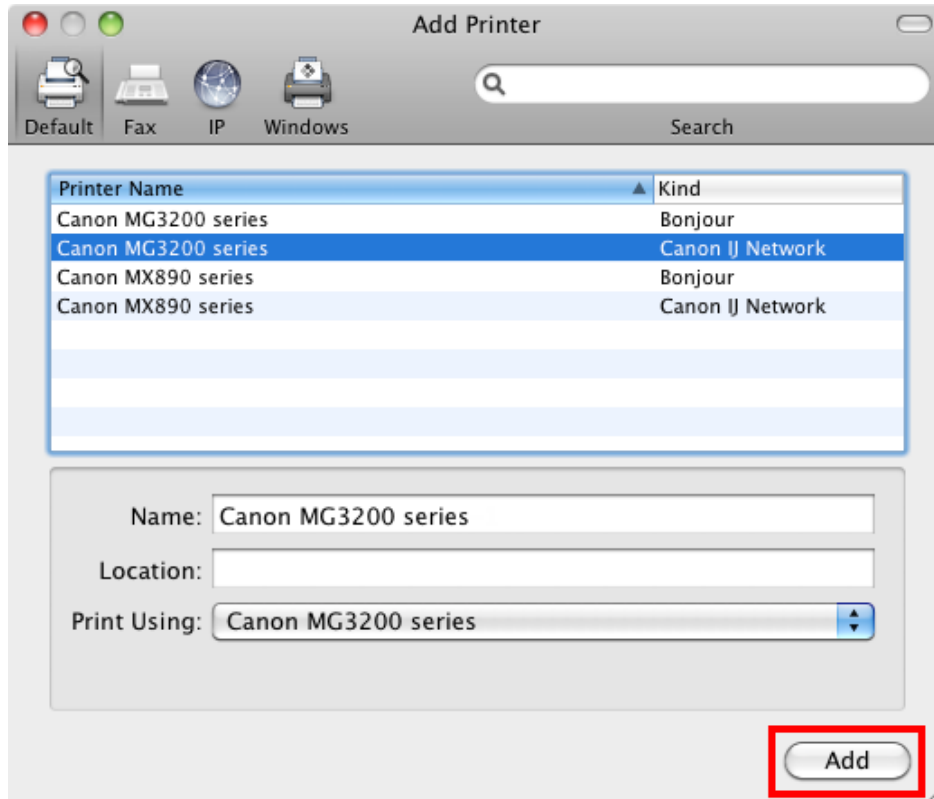


# Installing the Drivers & Software

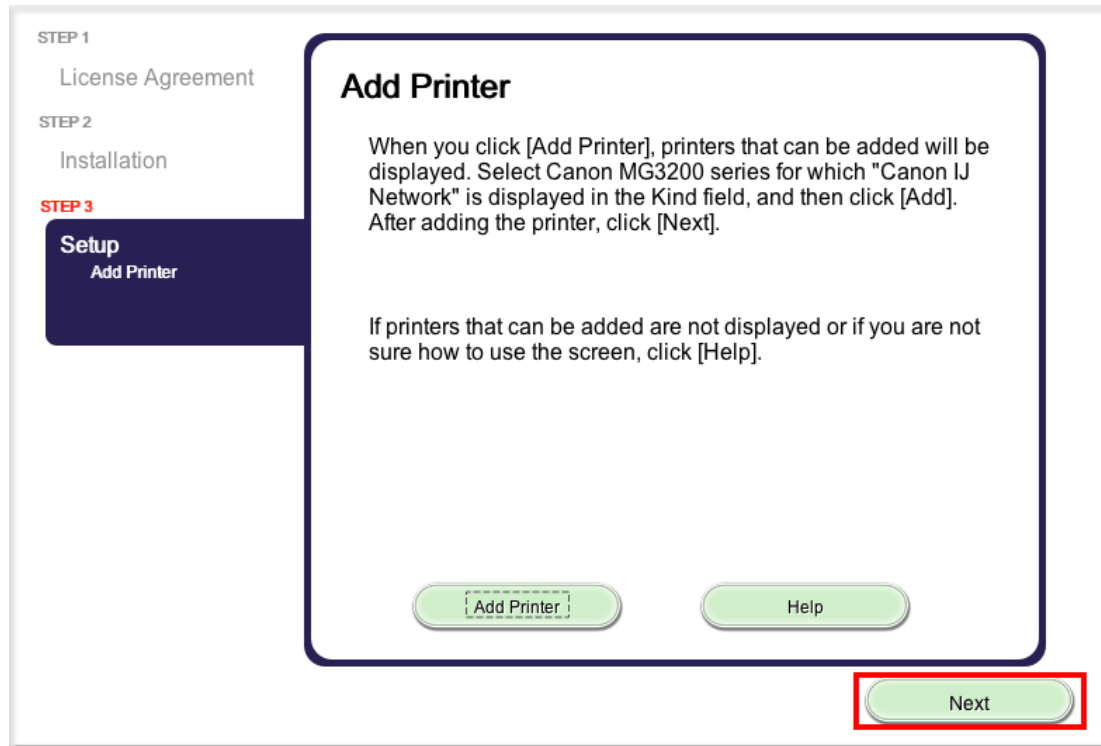
[<< Previous](#)

[Next >>](#)

Select the **MG3200 series** with **Canon IJ Network** listed for 'Kind', then click **Add**.



Click **Next** on the **Add Printer** screen.



Continue to follow on-screen instructions to finish setup and exit.

## Installing the PIXMA MG3220 on Your Wireless Network

If you can't find your CD-ROM, you may download the MG3200 series Mini Master Setup, which includes the same step-by-step installation as the CD-ROM, by following the instructions below:

1. [Click here to access the MG3220 Drivers & Software page.](#)
2. Select the operating system of your computer in the dropdown lists (see example below).
3. Expand the **'Drivers'** section, if necessary, by clicking the red triangle.
4. Click on the **'MG3200 series Mini Master Setup'** entry.
5. After reading the license agreement, click **'I Agree – Begin Download'** and save the file to your computer.
6. Once the download is complete, double-click the file from its download location to begin the installation.
7. Follow the same instructions as you would if using the Setup CD-ROM. [Click here to go to instructions.](#)

### Drivers & Software

Select an Operating System and OS Version from the drop down menu below then click on view the latest supported files for your product. Click on the file description to navigate to click on "I Agree - Begin Download" to start downloading.

Mac OS OS X v10.8 Mountain Lion [How](#)

Select Language:  English  Spanish  All

Show All

▼ Drivers		Sort by	Most Recent Post
File Description			Date
⊕ MG3200 series Mini Master Setup (OS X 10.5/10....			09/28/1
⊕ ICA Driver Ver. 2.1.1m (OS X 10.6/10.7/10.8)			09/14/1