

# Installing Your Multifunction to Additional Computers on Your Network

PIXMA MG3120

Macintosh OS

# Installing Your Multifunction to Additional Computers on Your Network

PIXMA MG3120  
Macintosh OS

<b>Preparing to Connect My Multifunction To My Network</b>	<b>3</b>
Network Requirements	3
Notes on Wireless Connection	4
<b>Using the Machine from Additional Computers</b>	<b>5</b>

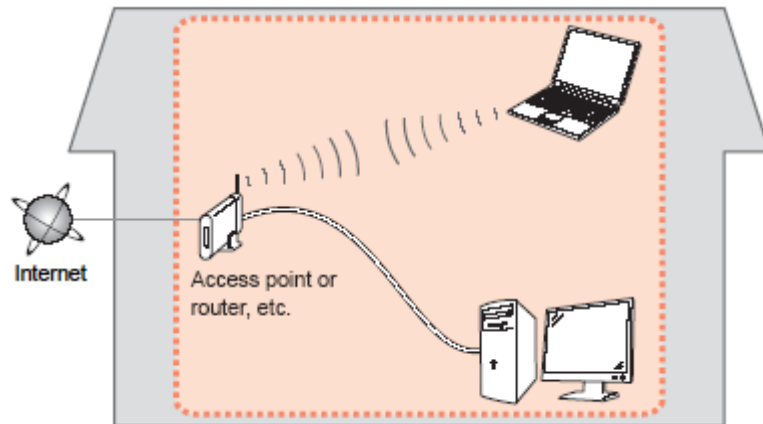
# Preparing to Connect My Multifunction To My Network

[<< Previous](#)

[Next >>](#)

## Network Requirements

Before connecting the machine to the network, make sure that configuration of the computer and access point or router is complete, and that the computer is connected to the network.



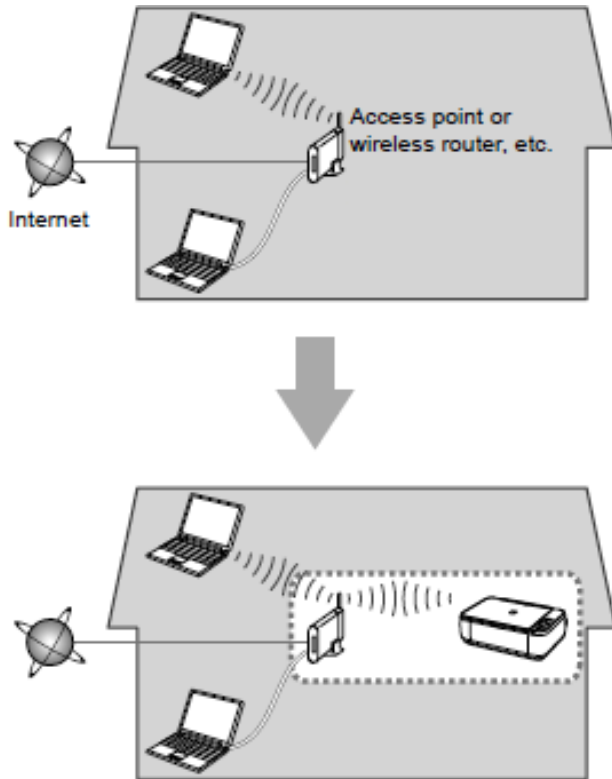
## Wireless Connection

Before connecting the machine to the network, the computer needs to be connected to the network. Make sure that configuration of the computer and access point or router is complete.

# Preparing to Connect My Multifunction To My Network

[<< Previous](#)

[Next >>](#)



An "Ad-hoc connection," which establishes a direct wireless connection between the computer and printer without using an access point, is not supported.

A router or access point is required for your printer to be used on a wireless network.

## Notes on Network Connection

- The configuration, router functions, setup procedures and security settings of the network device vary depending on your system environment. For details, refer to your device's instruction manual or contact its manufacturer.
- In an office setup, consult your network administrator
- If you connect to a network that is not protected with security measures, there is a risk of disclosing data such as your personal information to a third party.
- If an error message appears or if you have trouble with the network connection, refer to the printed manual: Network Setup Troubleshooting.
- Place the machine and computer on the same network segment.

## Software Installation

If the machine is already connected to a wireless connection, it can be used from additional computers on the same network.

To use from additional computers

### **IMPORTANT**

- Log on as the administrator (or a member of the Administrators group).
- Quit all running applications before installation.
- If the firewall function of your security software is turned on, a warning message may appear that Canon software is attempting to access the network. If such a warning message appears, set the security software to always allow access.

## Installing the PIXMA MG3120 on Additional Computers

If your printer is already set up on your network, and you wish to use the printer from additional computers, you only need to install the printer software on the other computers. There are no further settings that need to be performed on the printer, and the printer does not have to be connected with the USB cable.

A step-by-step walk through of the wireless setup is built in to the installation routine of the software that shipped with your PIXMA.

**\*Insert the Setup CD-ROM** that came with your printer into your CD-ROM drive and proceed through the easy to follow instructions.

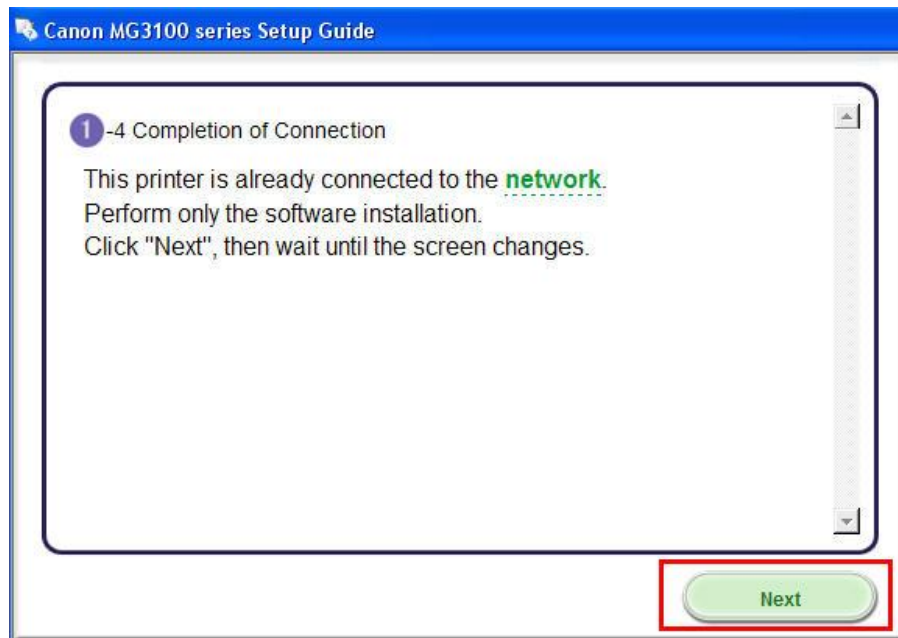
\*If you don't have or cannot use the Setup CD-ROM, you can still install the printer using a downloaded file. [Click here for information.](#)

Be sure to select **Wireless Connection** on the Connection Method Selection screen (1-2).



Follow any on-screen instructions until the **Completion of Connection** screen (1-4) appears. This is shown on the next page.

Connection is confirmed automatically if the printer has already been set up on the network. Click **Next** on the **Completion of Connection** screen (1-4)



# Installing the Drivers & Software

[<< Previous](#)

[Next >>](#)

On the **Software Installation List** select any additional\* software to install and click **Next**.

\***MP Drivers** is required for installation and cannot be deselected. In addition, we recommend installing **MP Navigator EX** and **Easy-PhotoPrint EX** in order to take full advantage of your printer's features.

\*If you are using the downloaded '**Mini Master setup**' file to install the printer, only the **MP Drivers** will be installed. Additional software can be downloaded separately. The software can be found in the **Software** section of **Drivers & Software** (the same page where you downloaded the Mini Master setup file)

**Software Installation List**

The selected software will be installed. Make sure that the software you want to install is selected, and then click [Next].

You need to install all the software below to use all functions of this printer.

<input checked="" type="checkbox"/>	MP Drivers	190 MB
<input type="checkbox"/>	ScanGear	90 MB
<input type="checkbox"/>	On-screen Manual	166 MB
<input type="checkbox"/>	MP Navigator EX	89 MB
<input type="checkbox"/>	Easy-PhotoPrint EX	610 MB
<input type="checkbox"/>	Solution Menu EX	20 MB
<input checked="" type="checkbox"/>	Canon IJ Network Tool	20 MB
<input type="checkbox"/>	Easy-WebPrint EX	35 MB
<input type="checkbox"/>		
<input type="checkbox"/>		
<input type="checkbox"/>		
<input type="checkbox"/>		
<input type="checkbox"/>		
<input type="checkbox"/>		

Drive Lion 30683 MB free space

Total used space: 210 MB

Select All

Clear All

Back

Next



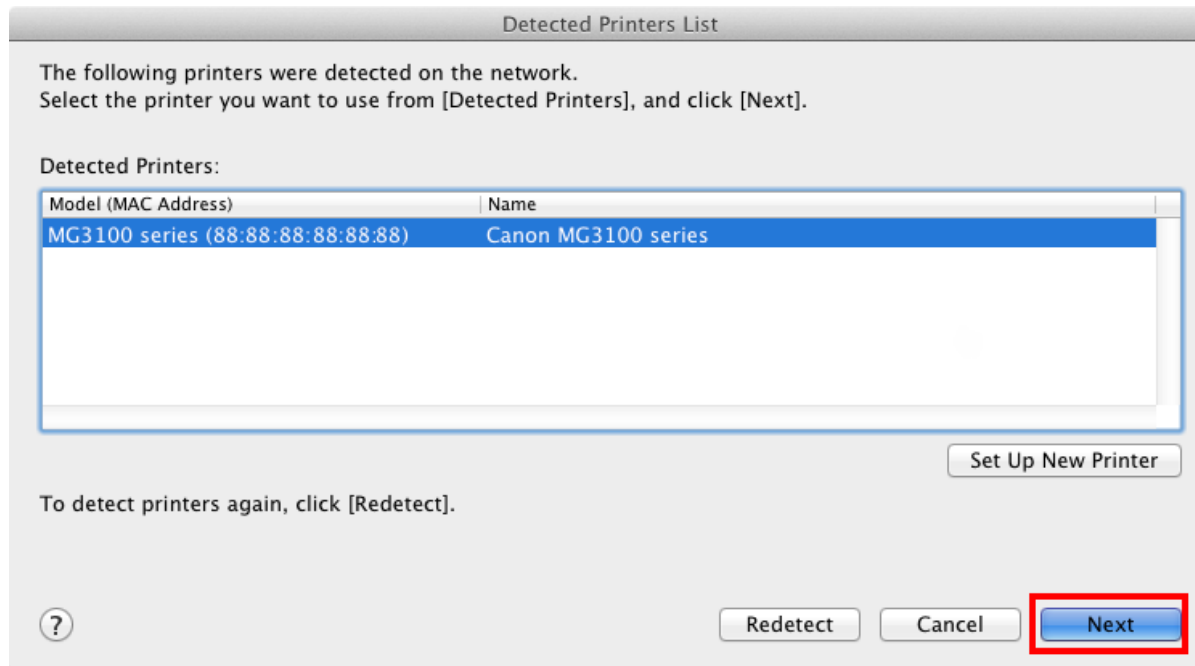
# Installing the Drivers & Software

[<< Previous](#)

[Next >>](#)

The drivers and software will begin to install. Continue to follow on-screen instructions.

When the **Detected Printers List** appears, verify that the '**MG3100 series**' is listed, then click **Next**.

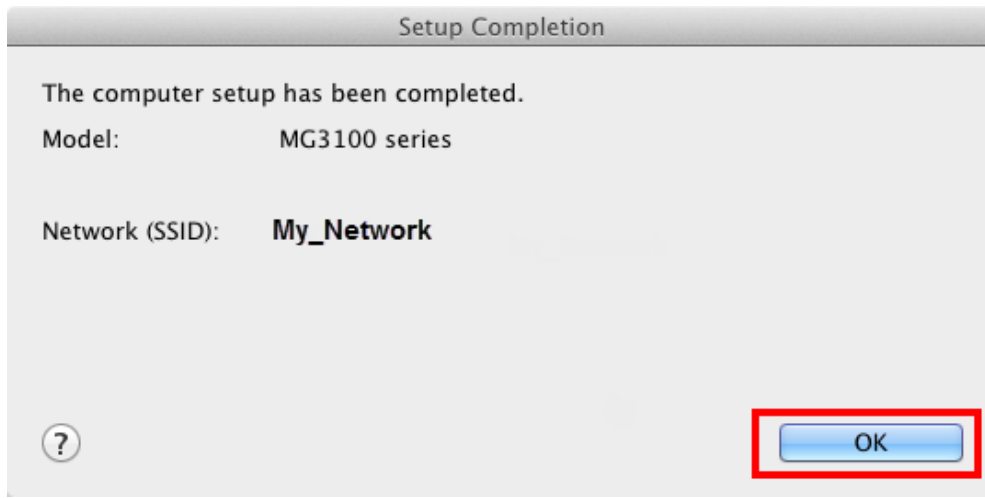


# Installing the Drivers & Software

[<< Previous](#)

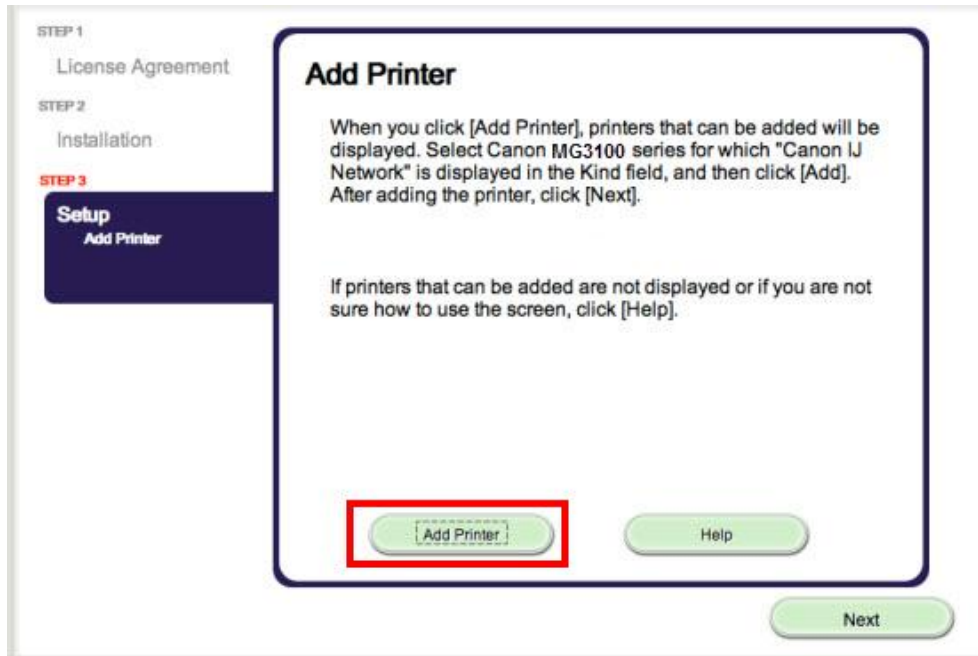
[Next >>](#)

Click **OK** on the **Setup Completion** screen



Continue to follow any on-screen instructions Until the **Add Printer** screen appears. This is shown on the next page.

Click **Add Printer** on the **Add Printer** screen

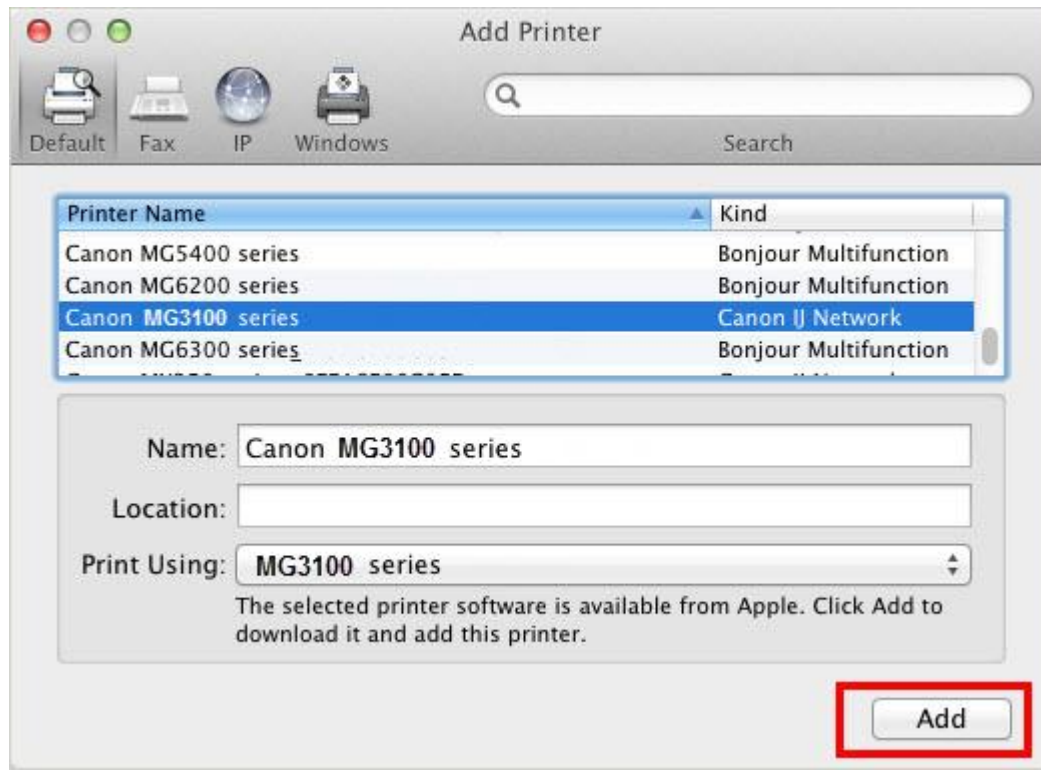


# Installing the Drivers & Software

[<< Previous](#)

[Next >>](#)

Select the **MG3100 series** with **Canon IJ Network** listed for 'Kind', then click **Add**.

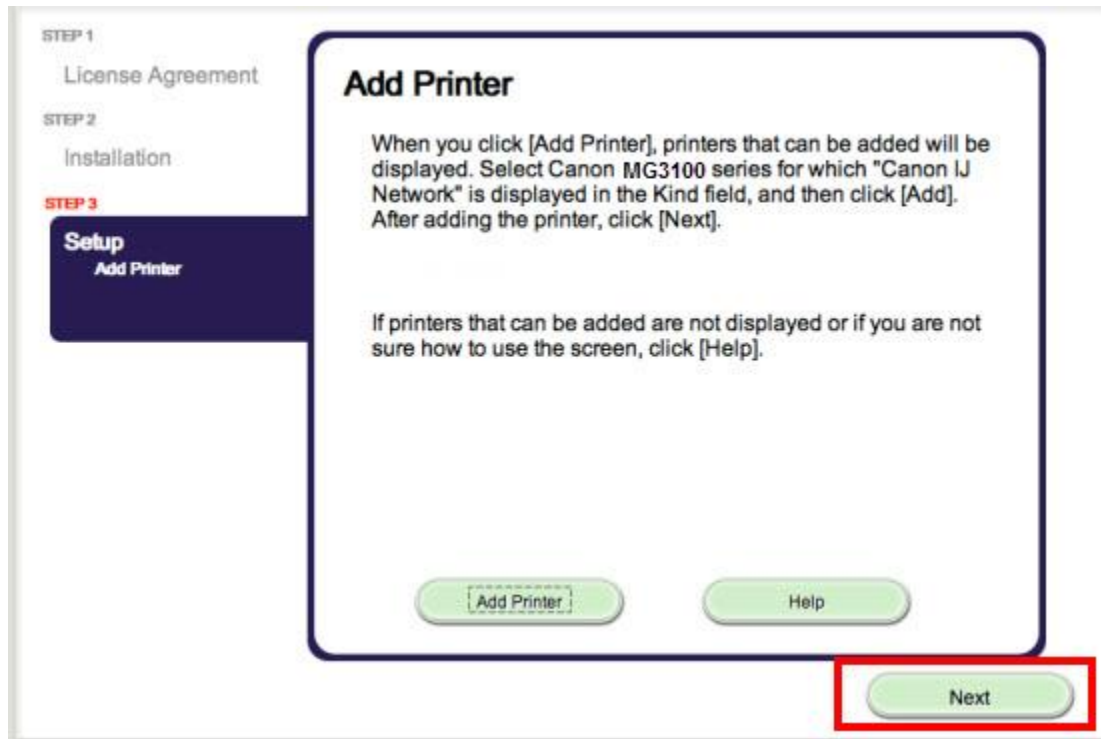


# Installing the Drivers & Software

[<< Previous](#)

[Next >>](#)

Click **Next** on the **Add Printer** screen.



Continue to follow on-screen instructions to finish setup and exit.

## Installing the PIXMA MG3120 on Additional Computers

If you can't find your CD-ROM, you may download the MG3100 series Mini Master Setup, which includes the same step-by-step installation as the CD-ROM, by following the instructions below:

1. [Click here to access the MG3120 Drivers & Software page.](#)
2. Select the operating system of your computer (see example below).
3. Expand the '**Drivers**' section by clicking the red triangle, if necessary.
4. Click on the '**MG3100 series Mini Master Setup**' file.
5. After reading the license agreement, click '**I Agree – Begin Download**' and save the file to your computer or network.
6. Once the download is complete, double-click the file from its download location to begin the installation.
7. Follow the same instructions as in the setup using the CD-ROM. [Click here for instructions.](#)

Mac OS OS X v10.7 Lion Ho

Select Language:  English  Spanish  All

Show All

▼ Drivers Sort by Most Recent Pos

File Description	Date
⊕ MG3100 series Scanner Driver Ver. 18.0.1b (OS X...	08/31
⊕ MG3100 series CUPS Printer Driver Ver. 10.67.1...	07/27
⊕ ICA Driver Ver. 1.11.0n (OS X 10.6/10.7/10.8)	07/11
⊕ <b>MG3100 series Mini Master Setup (Mac OS X 10.4...</b>	08/22
⊕ MG3100 series Scanner Driver Ver. 18.0.1 (Mac O...	08/22