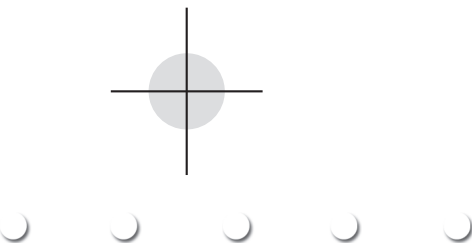


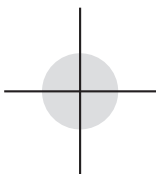
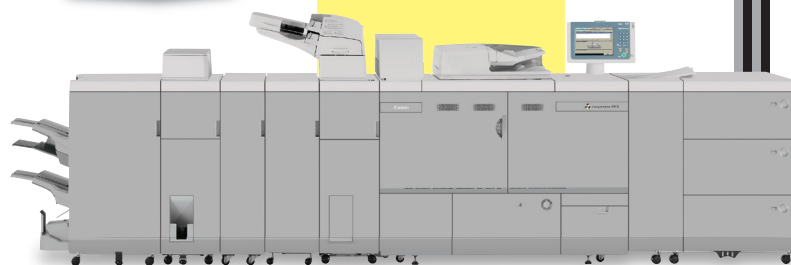
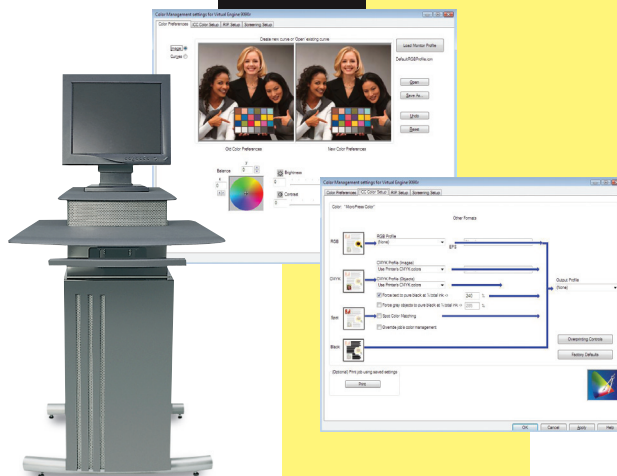


EFI® MicroPress® 8.1

Scalable Production Workflow Solution



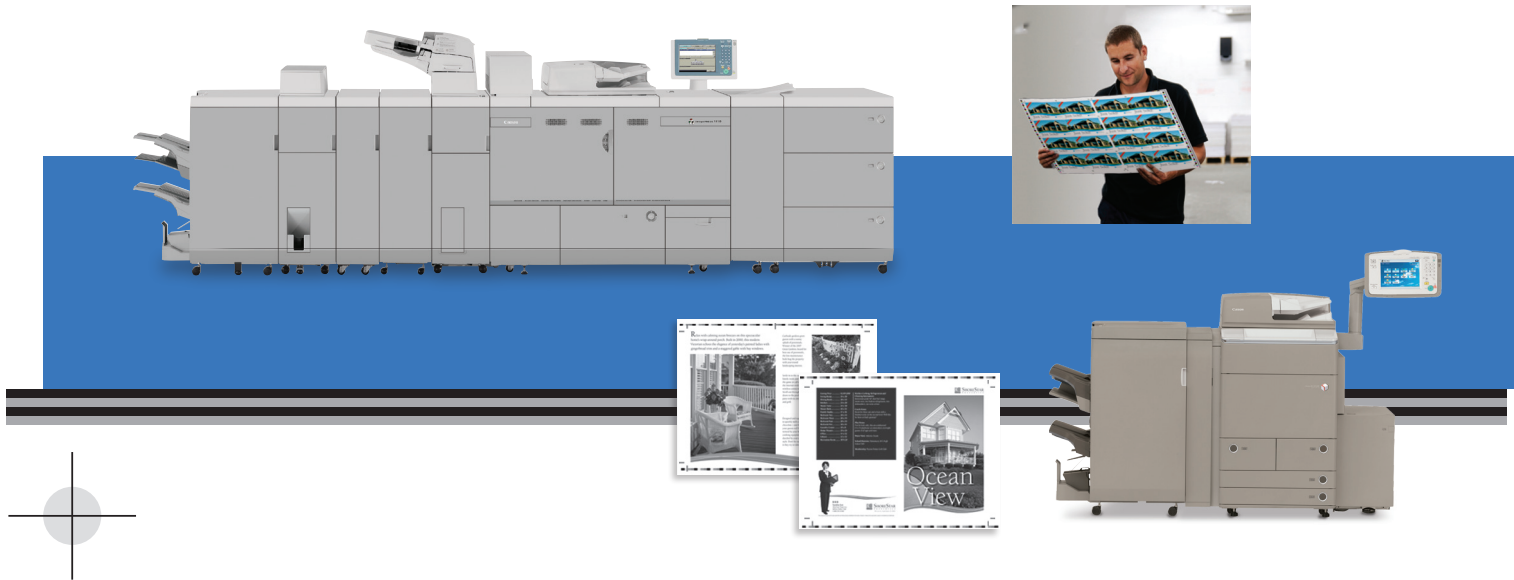
**Complete print workflow solution
for production or enterprise printing**



EFI MicroPress 8.1

Scalable Production Workflow Solution

A FLEXIBLE SOLUTION TO MEET A VARIETY OF MARKET NEEDS



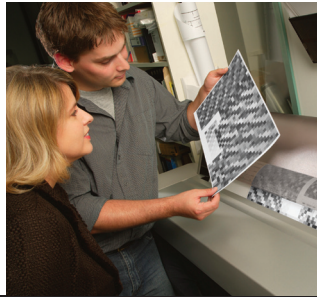
Production and enterprise print environments face a unique set of challenges every day, from assembling complex documents and ensuring consistent, high-quality output to reducing downtime and managing workflows efficiently. In mid- to high-volume production environments, multiple digital printers or presses are often needed to keep pace with the daily demand.

Because of this, EFI and Canon have partnered to offer a comprehensive solution to fit the workflow needs of a variety of print service providers, from corporate in-plant departments to commercial printers. With connectivity to the mid-volume colour and monochrome imagePRESS® digital presses and a variety of imageRUNNER® ADVANCE systems, EFI MicroPress Solo, Plus, and Max servers combine the flexibility, scalability, and ease of use of the digital front-end with the productivity, image quality, and versatility of Canon's robust portfolio of digital printing products.

MicroPress server is best suited for the following types of environments, especially those with the need to centrally manage multiple engines to streamline workflow and enable efficiency.

- **Print-on-Demand** environments such as quick printers and digital printers
- **In-plant CRDs** that act as production centres for mid- to large-size corporations
- **Educational Institutions** including primary, secondary, and higher education
- **Commercial Printers** that are growing their digital business

Accommodate your workflow and applications



Canon recognizes the need to bring to market more than just superior hardware technology. That's why we offer **imagePRESS Workflow Solutions**, a suite of hardware and software solutions to help print service providers of any size grow their digital print business. Canon is committed to integrating with industry standards to offer and support the latest in workflow technology, from creative and submission throughout the entire workflow to finishing and distribution.

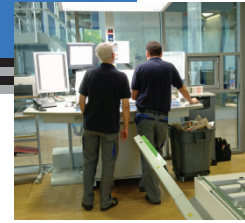
EFI MicroPress is part of this program within the workflow integration category. Workflow integration solutions strive to automate production processes, eliminate redundant processes, and streamline information through the workflow to maximize efficiency and profitability.



Deliver – Canon will *deliver* a complete solution and fill in the missing pieces to existing workflows.

Connect – Many environments have already made large investments in their workflow and they need Canon to *connect* to their existing workflow.

Simplify – The final goal is to deliver a solution that builds efficiency within the workflow and to *simplify* your production processes.

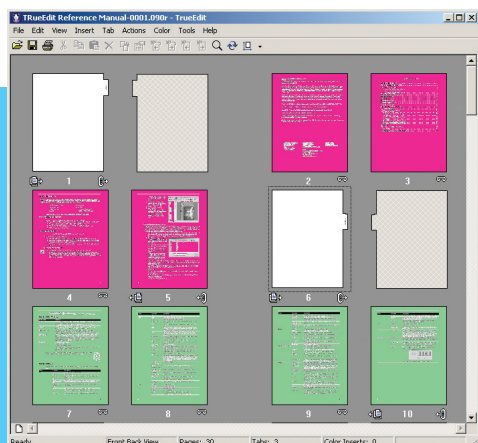


MAKE-READY TOOLS THAT SIMPLIFY COMPLEX DOCUMENT CREATION

One strength of the MicroPress server is its ability to offer a wide range of make-ready tools to help reduce prepress time and drive productivity. Because users are working in a rasterized workflow, comprehensive file changes and edits don't require re-processing before printing. With its ability to handle a variety of different file formats, the MicroPress server's job merge functionality makes simple work of bringing files from a variety of sources together to create one cohesive job.

Need to add tabs to a course manual, corporate report, or marketing collateral? No problem. The tab functionality available within the MicroPress server is one of the most robust in the industry. Adding new tabs in a document utilizing a WYSIWYG preview helps reduce operator error or wasted materials in the final production run.

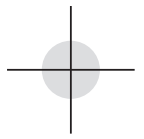
Whether you're printing saddle-stitched booklets, perfect-bound books, or pre-punched documents, the MicroPress server provides the make-ready tools necessary to help you set up these types of jobs easily—all while enabling the capabilities of the engine to print and finish these types of jobs in-line. The imagePRESS digital presses and imageRUNNER digital printers offer a variety of finishing options, ranging from in-line perfect binding to saddle-stitching and booklet bleed trimming.



WYSIWYG



TrueEdit



PRODUCTIVITY FEATURES TO KEEP UP WITH DEMAND

In multiple engine environments, the MicroPress server can be used as a central management system to control job setup and routing. Because of this, MicroPress Solo, Plus, and Max Servers maximize productivity in demanding production environments. In addition, the flexible, scalable design provides a growth path to meet future requirements.

The MicroPress server offers clustering technology, which allows a single Max server to drive up to 12 monochrome devices or five colour engines within a single product family. For example, jobs can be managed and split across any combination of multiple imagePRESS 1135P/1125P/1110P/1110S digital presses—all while enabling production at full engine-rated speed. This provides the ability to split a job and run it simultaneously on multiple engines, effectively multiplying your productivity by the number of engines within a cluster.

For documents that contain both colour and black-and-white pages, the MicroPress server has the ability to identify whether a page contains colour or is black-and-white only and sends each page to the appropriate printer. Colour and

black-and-white splitting reduces waste associated with printing pages in both black-and-white and colour, and increases productivity by eliminating the need to manually split and route the job.

For example, if a job with colour covers is sent to a multi-engine environment containing the imagePRESS 1110S digital press and an imageRUNNER ADVANCE C9075 PRO system, the black-and-white content pages would automatically print on the imagePRESS 1110S and the colour covers would automatically print on the imageRUNNER ADVANCE C9075 PRO.



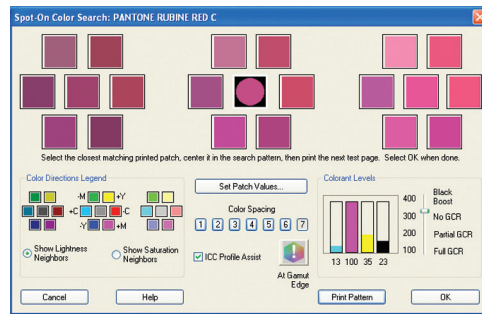


TAKE CONTROL OF YOUR COLOUR

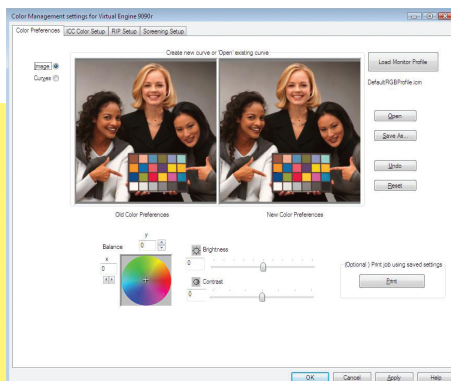
Demanding print environments require accurate colour controls. MicroPress offers these controls through its use of global calibration in multi-engine environments, the ability to adjust curves if necessary, and the capabilities of EFI Spot-On™ to help with matching and adjusting spot colours.

Honoring a corporate branding identity is important in any production environment. With the colour controls available within a MicroPress server, accurate simulation of named colours is no longer guesswork.

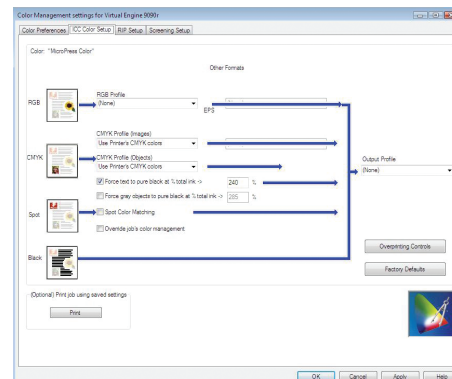
With the ability to produce colours the right way the first time, jobs can get out the door sooner, without sacrificing colour control for centralized management of your production environment or corporate workgroup.



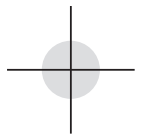
ColorWise Spot-On



Colour Editor



Setup with ICC Profiles

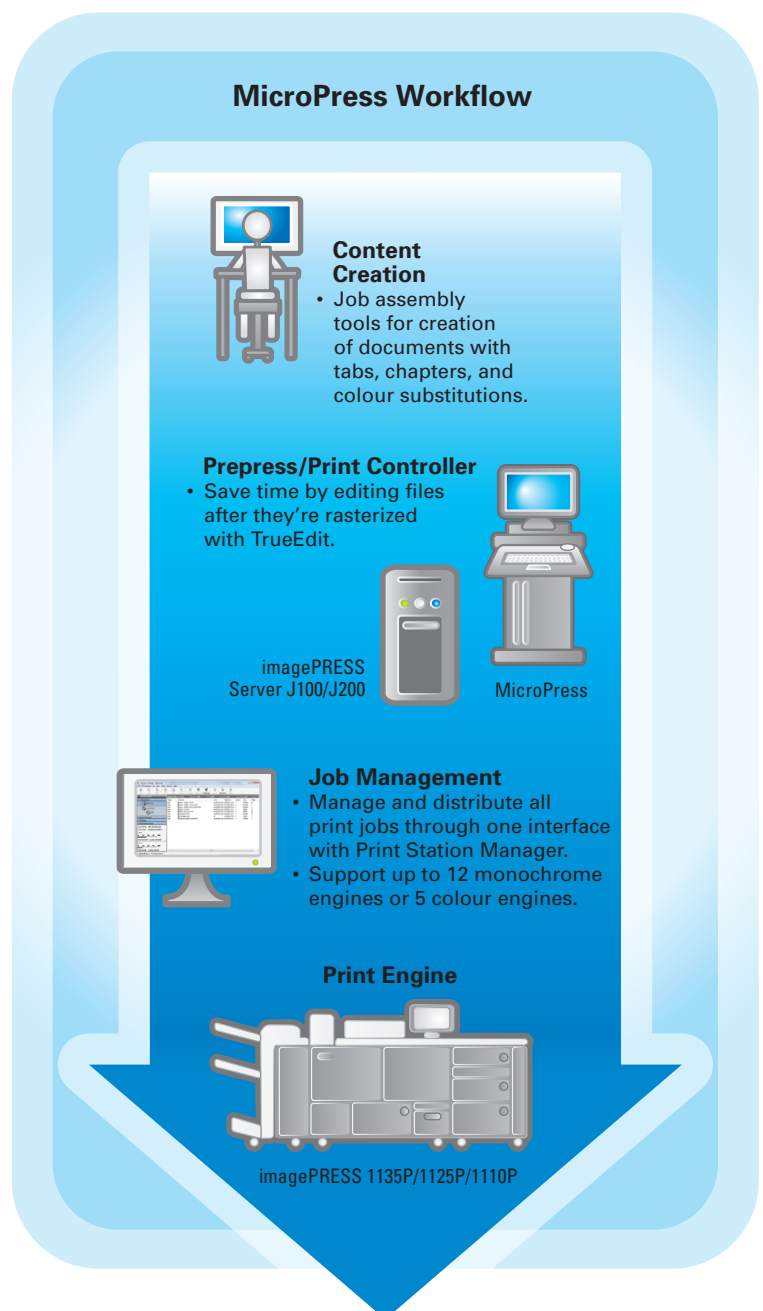


HIGH-QUALITY, PRODUCTIVE DIGITAL PRESSES AND PRINTERS CAN BE DRIVEN BY A MICROPRESS SERVER

The Flexibility to choose the right product to match current demand, future growth

The MicroPress 8.1 servers are supported with the following Canon imaging systems:

- Color imageRUNNER C5185/C4580/C4080 Series
- imageRUNNER 7105/7095/7086 and imageRUNNER 7095 printers
- imageRUNNER PRO 7110VP/7125VP/7138VP/7150VP Series
- imagePRESS C7000VP/C6000VP/C6000 digital presses
- imagePRESS 1135P/1125P/1110P/1110S digital presses
- imageRUNNER ADVANCE C9075 PRO/C9065 PRO*
- imageRUNNER ADVANCE C7065/C7055*
- imageRUNNER ADVANCE 8105/8095/8085**



* Connectivity for these engines requires the imagePASS-A1 controller or ColorPASS-GX300.

** Connectivity for these engines requires the imagePASS-U1. Please note that MicroPress v8.1.2 does not currently support the soon-to-be-released Booklet Finisher-F1 Pro and its related accessories (Booklet Trimmer-D1 and Puncher Unit-BB1). Further upgrades to MicroPress to support connectivity to these finishing options will be available later in 2011.

Features and Specifications



MicroPress 8.1 Server Features

	Version		
	Solo	Plus	Max
Scalability	Drives a single engine (can upgrade to Plus)	Drives up to 4 B/W engines or 2 colour engines	Drives up to 12 B/W engines or 5 colour engines
TruePrint	●	●	●
TrueCluster	N/A	●	●
TrueRecover	●	●	●
MicroPress RIP	●	●	●
2nd PowerRIP	N/A	○	●
TruePCL	●	○	●
TrueColor/TrueImage*	●	●	●
ColorWise Spot-On*	●	●	●
TrueEdit	●	●	●
Remote TrueEdit (3 License)	○	●	●
TrueScript	○	○	●
Auto Archive	●	●	●
Annotations	●	●	●
OCR	○	○	●
Calculate Toner Coverage	●	●	●
Export job info to third-party billing application	●	●	●
MicroSpool	●	●	●
MicrolImager	○ (For use on a separate PC*)	○ (For use on a separate PC*)	●
Hot Folders	●	●	●
SoftProof	●	●	●

● Standard ○ Optional

* TrueColor and ColorWise Spot-On are for colour engines; TrueImage is for black-and-white engines.

Server Specifications

MicroPress 8.1 Solo

Dell® OptiPlex 960
Windows® XP Professional, 64-bit
Intel® Core™ 2 Quad 2.66GHz
1333MHz System Bus
8GB (4 x 2GB), 800MHz RAM
160GB SATA Hard Drive
12 USB 2.0 Ports (4 Front, 6 Rear, 2 Internal)
16x SATA DVD+/-RW Drive

MicroPress 8.1 Plus

Dell OptiPlex 960
Windows XP Professional, 64-bit
Intel Core 2 Quad 2.66GHz
1333MHz System Bus
8GB (4 x 2GB), 800MHz RAM
160GB SATA Hard Drive
12 USB 2.0 Ports (4 Front, 6 Rear, 2 Internal)
16x SATA DVD+/-RW Drive

MicroPress 8.1 Max

Dell Precision T7500
Windows XP Professional, 64-bit
Dual Intel Quad Core Xeon, 2.13GHz Processors
4.8GT/S System Bus
12GB (6x2GB), 1066MHz RAM
3 x 160GB SATA Hard Drive
11 USB 2.0 Ports (2 Front, 6 Rear, 3 Internal)
16x DVD+/-RW Drive

Canon
*image*ANYWARE

This application is available in English only.

1-800-OK-CANON
www.canon.ca

CANON, IMAGEPRESS, and IMAGERUNNER are registered trademarks of Canon Inc. in the United States and may also be registered trademarks or trademarks in other countries. IMAGEANYWARE is a trademark of Canon. All other referenced product names and marks are trademarks of their respective owners and are hereby acknowledged. Some items may not be available at this time; please check for availability. Specifications and availability subject to change without notice. ©2010 Canon U.S.A., Inc. All rights reserved.