

Firmware Update Procedure

Update Procedure


This procedure is used to update the printer's firmware to support AirPrint.

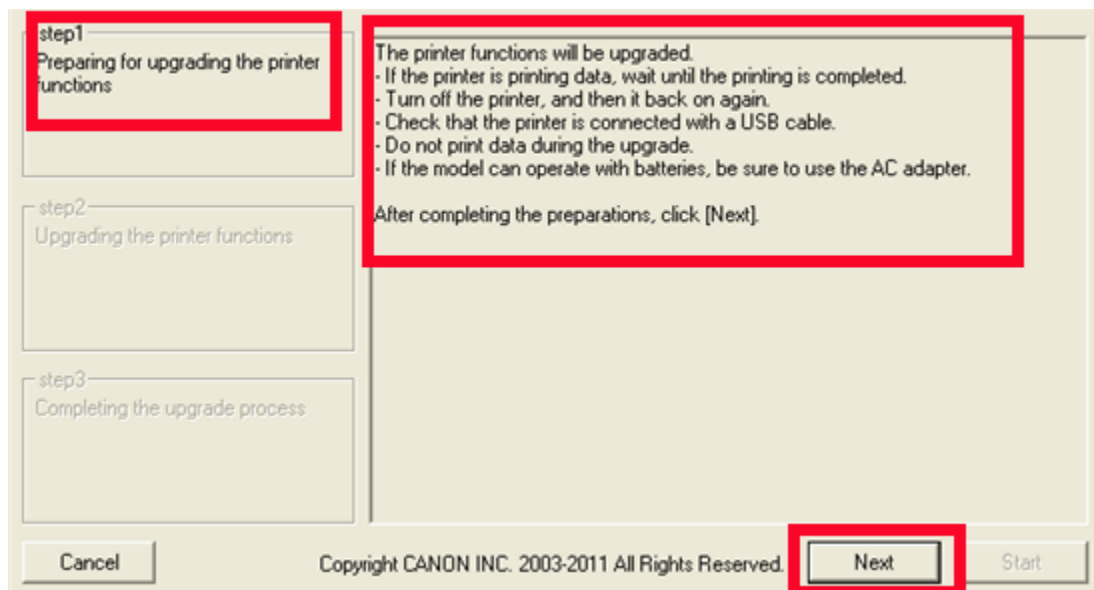
1. Connect the computer and the printer by using a USB cable.

If a LAN cable or a USB cable for camera connection is connected, disconnect those cables.

For models with card slots, remove all the cards if they are inserted in the card slots.

Note

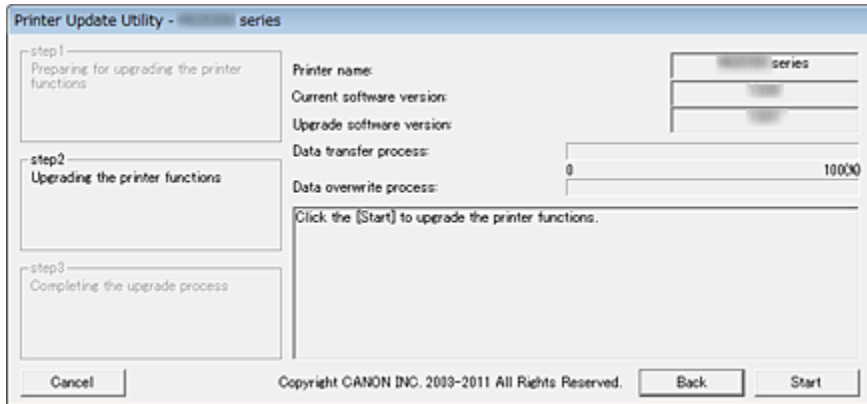
- Make sure that only one printer is connected to the computer via a USB cable.
2. Double-click  (Printer Update) to start the update utility.
 3. Check the message content of **step 1**, "Preparing for upgrading the printer functions", turn on the printer power, and then click **Next**.



Note

- If an error message is displayed, the possible causes are as follows:
 - Cause (1): The USB cable is not connected
Corrective action: Connect the USB cable, and start over from step 1.
 - Cause (2): The downloaded update file is for a different printer.
Corrective action: Download the file for the printer to be updated, and start over from step 1.

4. Check the message content of **step 2**, "Upgrading the printer functions", and click **Start**.



Printer name: Name of the printer connected to the computer.

Current software version: Software version of the connected printer.

Upgrade software version: Software version to which the printer is to be updated at this time.

Important

- Do not turn off the printer or disconnect the USB cable until the update is complete. Doing so may cause an error.

Note

- If you are unable to click **Start**, the update was attempted on a printer that does not require firmware overwriting. Check the **Current software version** again. If it does not require the update then cancel it.
 - During the update, the error lamp on the printer will flash orange.
5. When **step 3**, "Completing the upgrade process" content appears, check the message content, and click **Quit**.
 6. Press the printer power button to turn off the printer.

This completes the software update. If you are using the printer with LAN connection, disconnect the USB cable first and then, connect the LAN cable.

Note

- You must turn off the power and then turn it back on again. Otherwise, the printer will not operate properly.
- If the power is turned off during the update, the update will not end normally. If the printer does not operate normally even if you turn off the printer power and then turn it back on again, the update may not have ended normally.
- The update procedure will create a new (additional) printer listing which has USB selected for the port. Since you will be printing wirelessly from the computer, it's best to delete this printer instance to avoid attempting to print to the wrong port. For help to delete the listing, [click here](#).