



Installing Your Multifunction to Your Network for the First Time

PIXMA MX922

Macintosh OS

Installing Your Multifunction to Your Network for the First Time

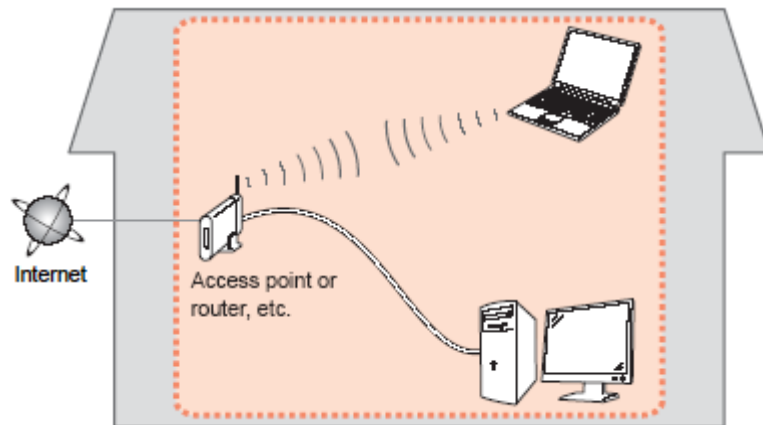
PIXMA MX922
Macintosh OS

| | |
|--|----------|
| Preparing to Connect My Multifunction to My Network | 3 |
| Network Requirements | 3 |
| Notes on Wireless Connection | 4 |
| Installing the Drivers | 5 |

Preparing to Connect My Multifunction To My Network

Network Requirements

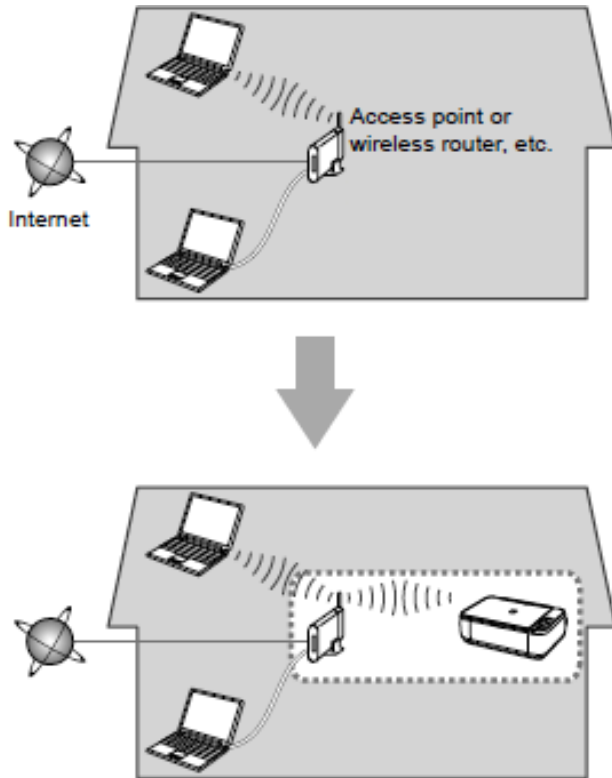
Before connecting the machine to the network, make sure that configuration of the computer and access point or router is complete, and that the computer is connected to the network.



Wireless Connection

Before connecting the machine to the network, the computer needs to be connected to the network. Make sure that configuration of the computer and access point or router is complete.

Preparing to Connect My Multifunction To My Network



An "Ad-hoc connection," which establishes a direct connection to the computer over a wireless connection without using an access point, is not supported.

Notes on Network Connection

- The configuration, router functions, setup procedures and security settings of the network device vary depending on your system environment. For details, refer to your device's instruction manual or contact its manufacturer.
- In an office setup, consult your network administrator
- If you connect to a network that is not protected with security measures, there is a risk of disclosing data such as your personal information to a third party.
- If an error message appears or if you have trouble with the network connection, refer to the printed manual: Network Setup Troubleshooting.
- Place the machine and computer on the same network segment.

Installing the Drivers & Software

Software Installation

To use the machine by connecting it to a computer, software including the drivers needs to be copied (installed) to the computer's hard disk. (The installation time varies depending on the computer environment or the number of application software to be installed.)

IMPORTANT

- Log on as the administrator (or a member of the Administrators group).
- Quit all running applications before installation.
- Do not switch users during the installation process.
- Internet connection may be required during the installation. Connection fees may apply. Consult the internet service provider.
- It may be necessary to restart your computer during the installation process. Follow the on-screen instructions and do not remove the Setup CD-ROM during restarting. The installation resumes once your computer has restarted.
- If the firewall function of your security software is turned on, a warning message may appear that Canon software is attempting to access the network. If such a warning message appears, set the security software to always allow access.

Installing the Drivers

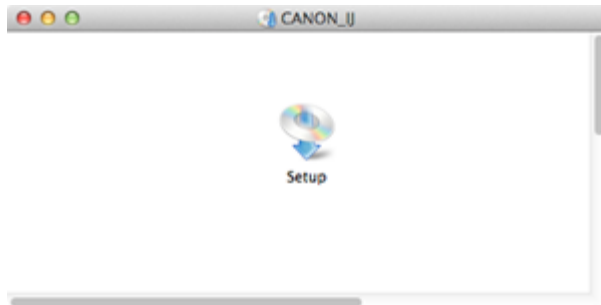
1. Insert the CD-ROM into the computer.



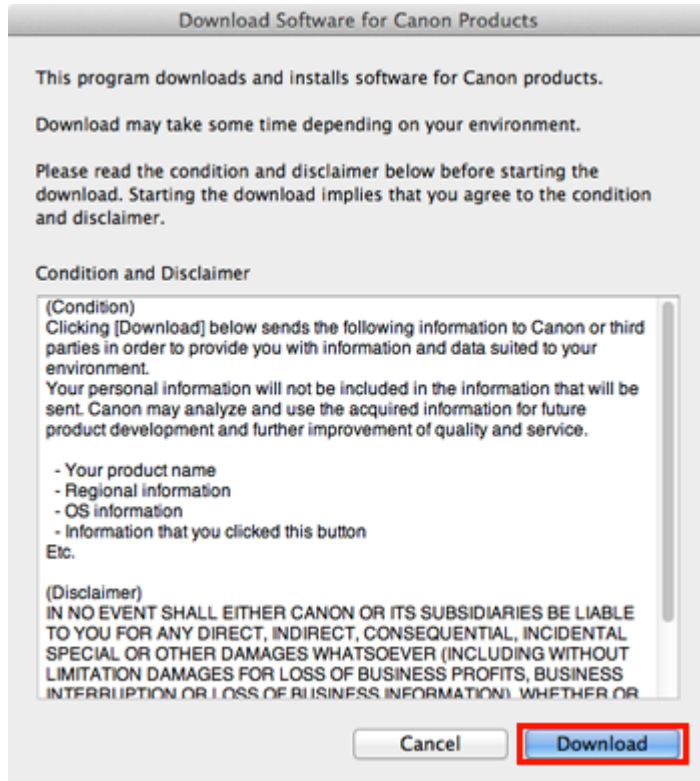
IMPORTANT

If the USB cable is already connected, unplug it. If a message appears on the computer, click **Cancel**.

2. Double-click the **[Setup]** icon in the CD-ROM folder, then click **[Download]** in the subsequent window.



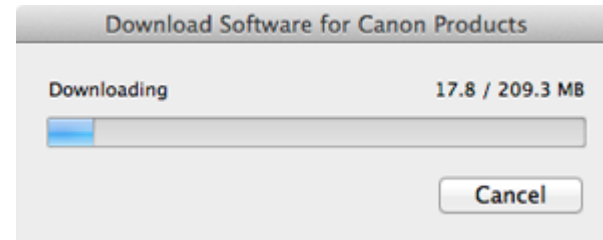
Installing the Drivers



REFERENCE



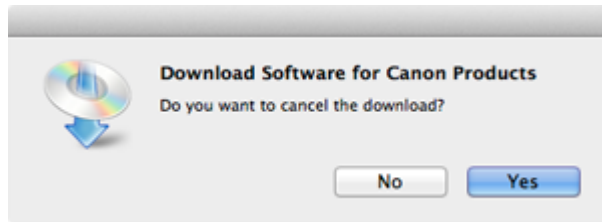
- When the CD-ROM folder does not open automatically, double-click the CD-ROM icon displayed on the desktop.
- The screen below is displayed while downloading.



Installing the Drivers

If you click [**Cancel**] while downloading, you will see the following screen.

- If you click [**No**], you will return to the screen displayed while downloading.
- If you click [**Yes**], the download is cancelled. In this case, the files under the download are deleted.

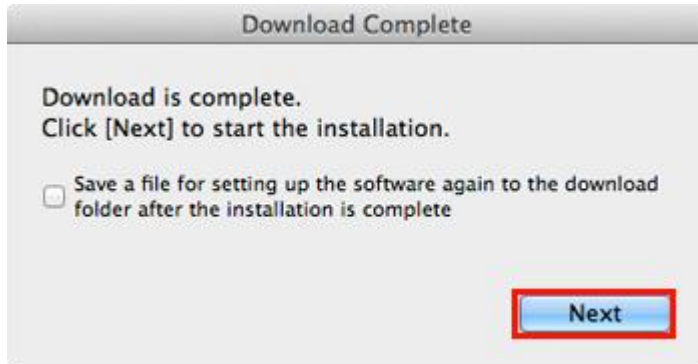


When the download fails, the screen below is displayed.
Click [**OK**], and you will go back to the screen for downloading in the procedure .



Installing the Drivers

3. When the download is complete, the screen below is displayed. Click **[Next]**.



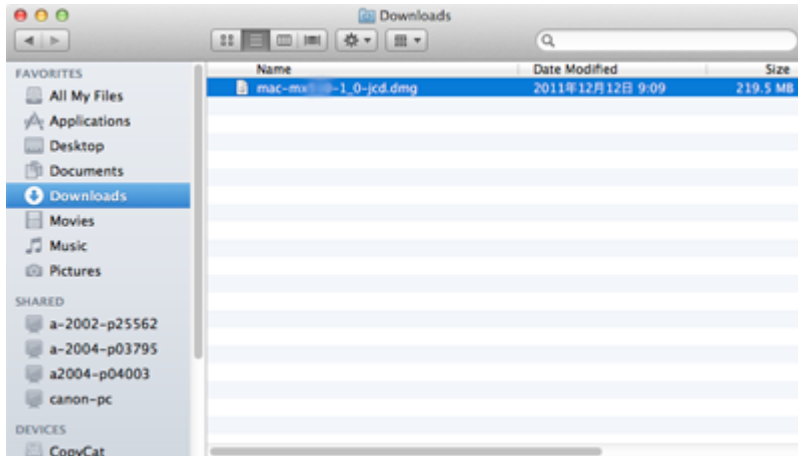
REFERENCE

Select "Save a file for setting up the software again to the download folder after the installation is complete," and the file will be saved to the download folder.



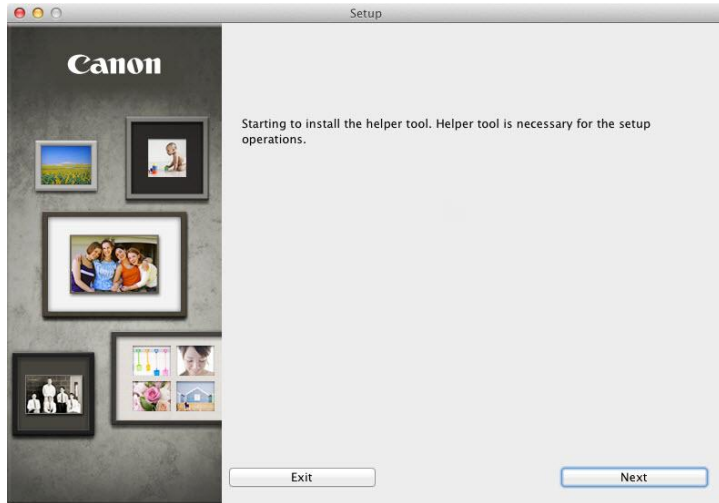
Installing the Drivers

You can perform the setup later using this file.

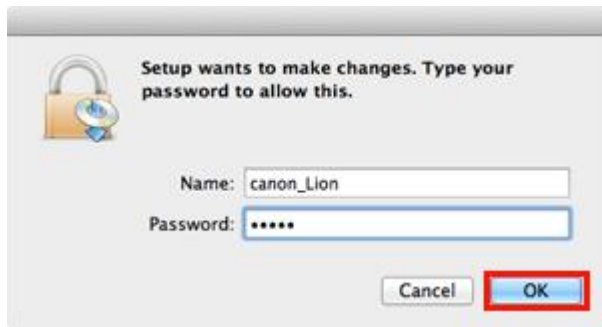


Connecting to the Wireless Network

4. Click **Next** to install the helper tool.



5. In the subsequent screen, enter the administrator name and password. Then click **[OK]**.




Connecting to the Wireless Network

6. Continue following instructions. Click **Network Connection** on **Connection Method Selection**

1 -1 Connection Method Selection

Select a method to connect the printer.



Select this option when using the printer with a computer over your **Network** (LAN), or when sharing the printer with other computers. An **access point** (or **router**) is required.

7. Click **Wireless Connection***

1 -2 Connection Method Selection

Select a method to connect the printer.



Select this option when using the printer with your computer via **Wi-Fi** (without using a cable), or when sharing the printer with other computers. An **access point** (or wireless **router**) is required.

8. Follow any instructions and Click **Connect to the Network** when the **Printer Setup** window appears .

2 -1 Printer Setup

Connect the printer to the **network**.
Click [here](#) for notes on **wireless connection**

Start setup

Connect to the network

9. Follow any instructions. Pay particular attention to the instruction in the **Setup Procedure Selection (3-1)** if setup detects a WPS access point. Continue to the next page for important information on the Setup Procedure Selection. Do not proceed past the **Setup Procedure Selection (3-1)** step until reading the information on the next page.

10. The printer automatically searches for access points that support **WPS** (Wi-Fi Protected Setup)*. If a **WPS** access point is detected, the **Push Button Method** screen (shown below on left) will appear on the machine's operation panel

*Unless you are absolutely sure your access point supports WPS and you are familiar with activating this on your access point, **press the Stop button** on the printer's operation panel and click on **Other Methods** on the **Setup Procedure Selection** screen (screenshot shown below)*.

If the **Push Button Method** is not shown on the printer's operation panel (when no WPS access points have been detected), select **Standard setup** on the printer's operation panel, then click **Other Methods** on the **Setup Procedure Selection** screen

3 -1 Setup Procedure Selection

The printer will automatically search for **access points** supporting **WPS**.

Click the method below that matches the screen displayed on your printer.

* If the Push Button Method screen is displayed on the printer
When you are unsure if your access point or **router** supports this technology, press the **Stop** button.
When the printer screen changes from left to right, click [here](#)
Proceed to the screen for Standard setup.

[Push Button Method](#)

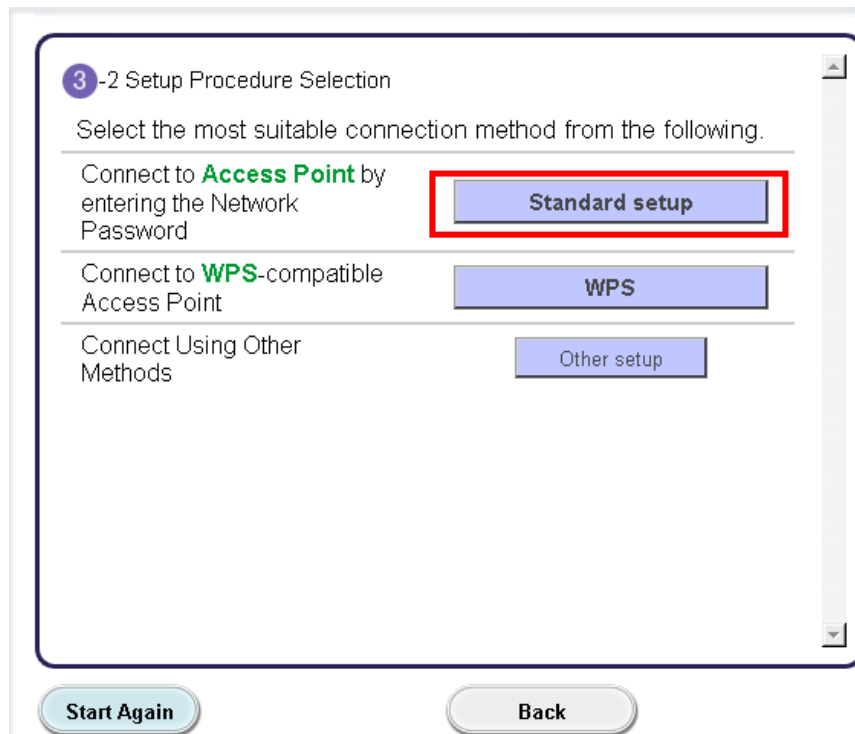
[Other Methods](#)

If you selected the **Push Button Method**, continue to follow any instructions until the **Completion of Connection** screen appears. [Click here to skip ahead to the Completion of Connection.](#)

If you selected **Other Methods**, please continue to the next page for important information

For Standard setup only

Select **Standard setup** on the **Setup Procedure Selection** screen (3-2)

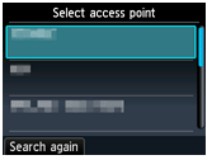


Continue to next page before proceeding any further with setup

Follow On-screen instructions. When you get to Step 4-2 and later in Step 4-4 (screens shown below) you will need to know SSID and password information*

Step 4-2

4 -2 Connection via Standard setup



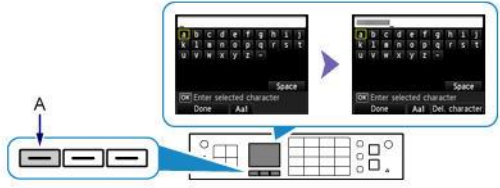
1. Select your **access point**, then press the **OK** button.
If another screen appears, refer to "Troubleshooting" on the right.

If you don't know your access point name ▶▶▶ **Confirm the access point name (automatic display)**

Select the automatically displayed access point name in the printer screen.

Step 4-4

4 -4 Connection via Standard setup



1. Enter the **network password (WEP key or passphrase)**.
Character entry is case-sensitive so be sure to confirm. Click [here](#) for details on how to enter characters and how to change the character type.

If you don't know the network password for your **access point** ▶▶▶ **Confirm the network password (automatic display)**

Enter the automatically displayed network password in the printer screen.

2. Press the left **Function** button (A).

*Unless you are absolutely certain of this information, please continue to the next page for information on locating / verifying this information

Connecting to the Wireless Network

[<< Previous](#)

[Next >>](#)

If you don't know your Access Point / Router name or SSID*, or the Passphrase or Network key for your wireless network, you can find this information during Standard setup using the Setup CD-ROM or the downloaded files (Mini Master Setup or Master Setup).

*The terms 'SSID' and 'AccessPoint / Router' refer to a name used to identify the specific Access Point or Router. 'Passphrase' and 'Network Key' refer to a password required to prevent unauthorized access to communication.

Look for the **Confirm the access point name (automatic display)** or the **Confirm the network key (automatic display)** buttons during the setup procedure.



Clicking either of these buttons will give the needed information. On a Mac OS X system you may need to click 'Allow' on one or more windows after clicking either of the above buttons. See example below of the Wireless Lan Setup Information window. (appearance varies depending on Operating System). Use the provided information when selecting the Access Point / Router and for entering the Network Key.

Below is information about the access points detected from your computer.

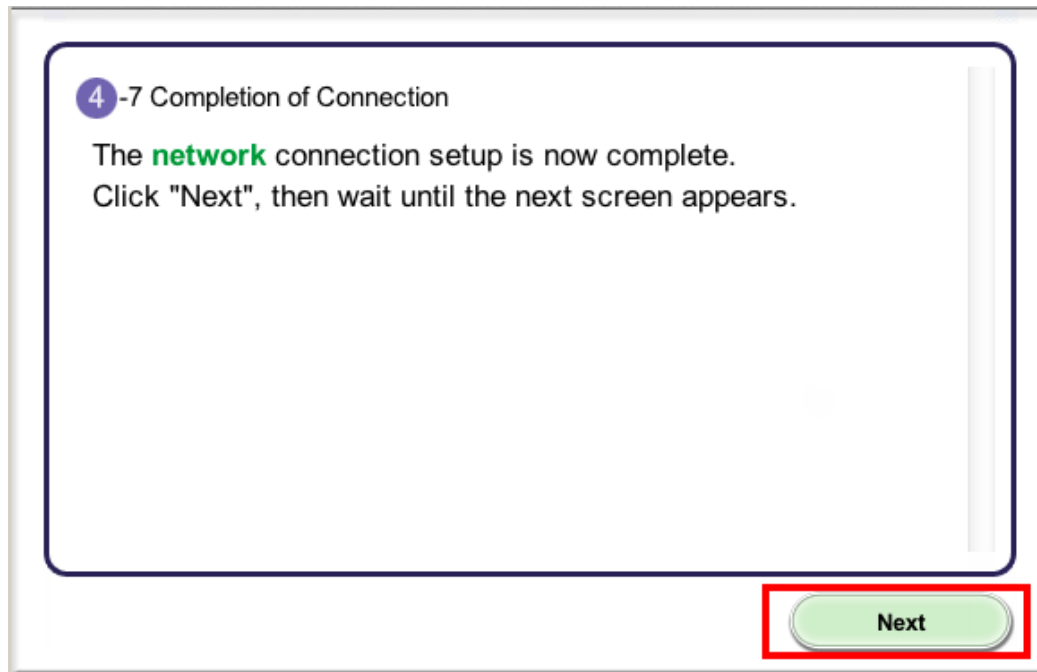
Wireless LAN Setup Information:

| Access Point Na... | Network Key (Encryption Key) |
|--------------------|------------------------------|
| YourNetName | YourPassPhraseorNetKey |

OK

Installing the Drivers

11. Continue to follow any instructions until the **Setup Completion** or **Completion of Connection** screen below is displayed. Network connection setting is complete.



Click **Next**. Software will install. Continue to follow instructions until the **Add Printer** screen (shown on next page) appears.

12. Network setup is complete. Continue to follow any remaining On-screen instructions to install the software. On the Software Installation List screen, select any software to be installed. **MP Drivers** and **Canon IJ Network Tool** which are pre-selected are required for the printer to be able to be used over the network. **My Image Garden**, **Quick Menu** and **ScanGear** are highly recommended to take full advantage of your printer's features. Click **Next** after selecting the software.

Software Installation List

The selected software will be installed. Make sure that the software you want to install is selected. Click [Next].

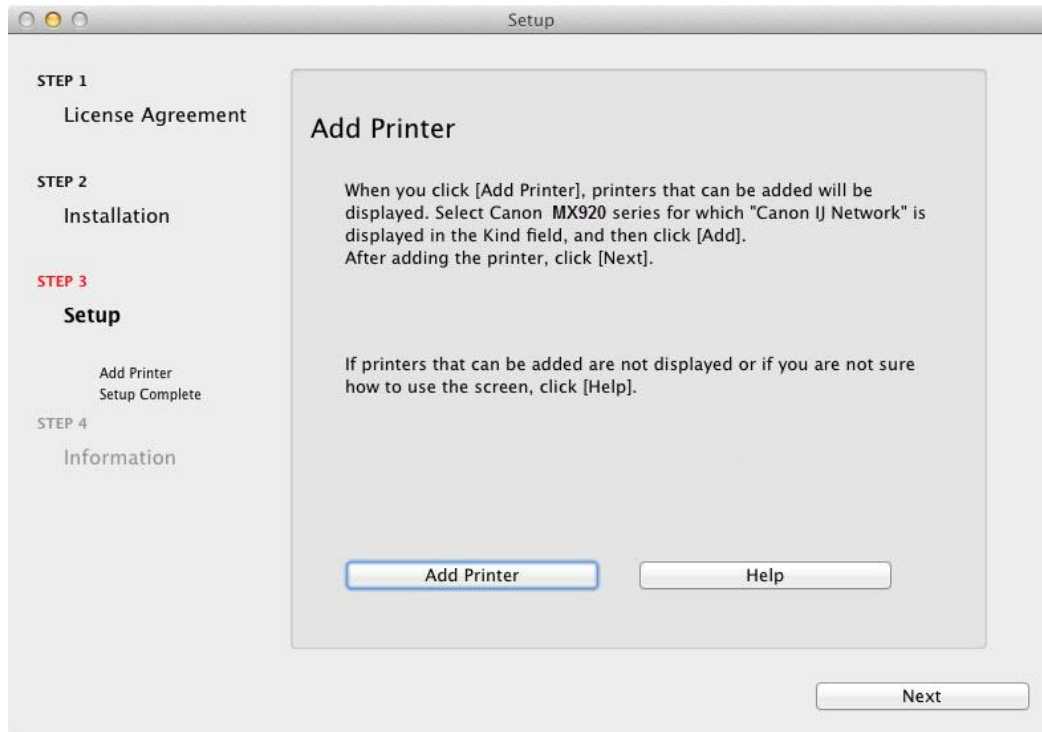
You need to install all the software below to use all functions of this printer.

| | | |
|-------------------------------------|-----------------------|--------|
| <input checked="" type="checkbox"/> | MP Drivers | 180 MB |
| <input type="checkbox"/> | ScanGear | 80 MB |
| <input type="checkbox"/> | User's Manual | 100 MB |
| <input type="checkbox"/> | My Image Garden | 680 MB |
| <input type="checkbox"/> | Speed Dial Utility | 10 MB |
| <input type="checkbox"/> | Quick Menu | 25 MB |
| <input checked="" type="checkbox"/> | Canon IJ Network Tool | 20 MB |
| | | |
| | | |
| | | |

Installing the Drivers

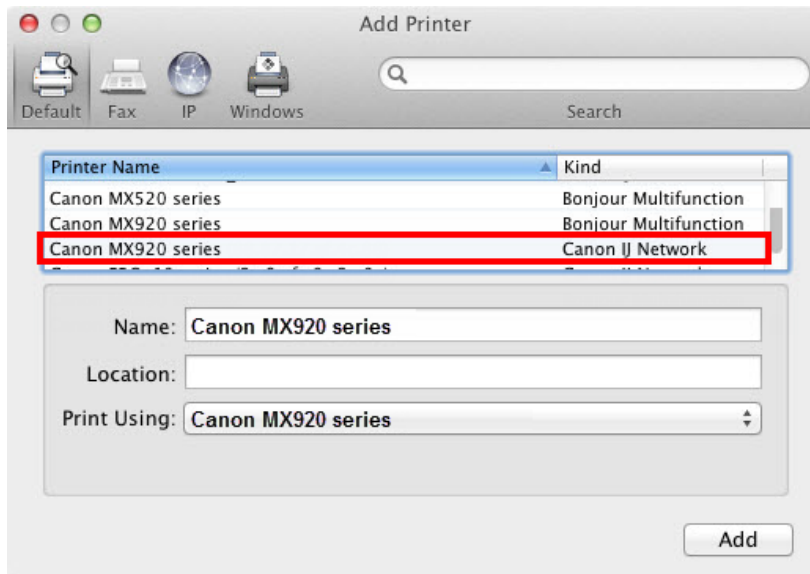
Add the Printer

1. Click **Add Printer** on the Add Printer Screen



Installing the Drivers

2. Select **Canon MX920 series** with **Canon IJ Network** listed in the **Kind** column*. Click **Add**.



REFERENCE

If the machine is not detected, make sure of the following:

- The machine is turned on.
- The firewall function of any security software is turned off.
- The computer is connected to the access point.

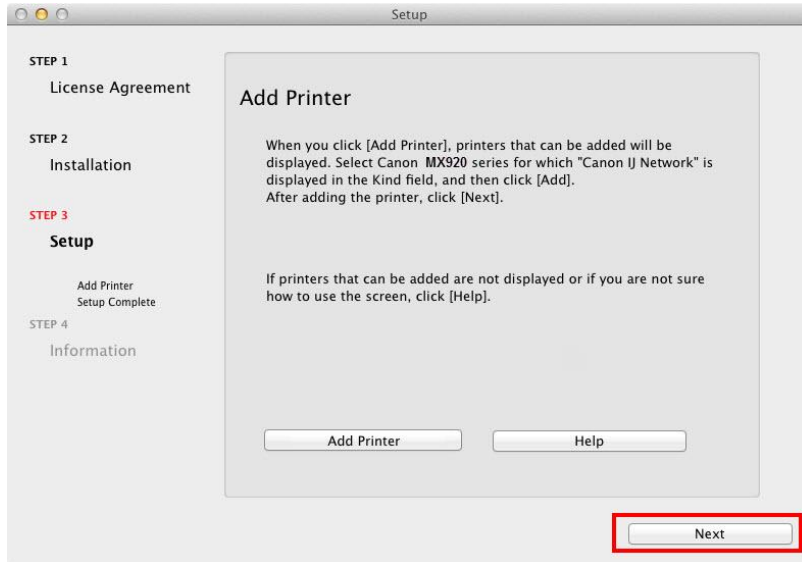
*CAUTION

If you will be installing the Canon printer driver on Mac OS X and using the printer through a network connection, you can select [**Bonjour**] or [**Canon IJ Network**] in the [**Add Printer**] dialog.

If [**Bonjour**] is selected, remaining ink level messages may differ from those indicated by [**Canon IJ Network**]. Canon recommends you to use [**Canon IJ Network**] for printing.

Installing the Drivers

4. Click Next.



5. Click Next.



Setup is complete. Click **Next** to finish the remaining information section.