



Getting Your Multifunction Back On Your Network After A Router Or Network Change

PIXMA MX722

Mac OS

Connecting to the Network

If any of the following situations exist

- You have replaced your Router or Access Point
- You want to use a different wireless network
- Router settings have been changed.

Please complete the following steps to apply the new configuration settings to your multifunction.*

*The procedure to reconfigure the printer will cause a new instance or listing of the printer in **Print & Fax** or **Print & Scan**. To avoid possible confusion it is recommended to delete the printer listing prior to performing the reconfiguration procedure. [Click here for instructions.](#)

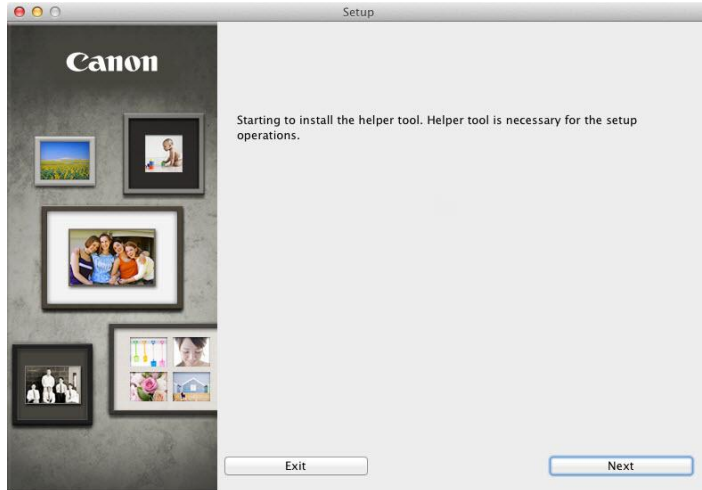
1. To re-establish communication on the network after changing the router / Access Point or when connecting to a different network, the settings on the Multifunction need to be changed. If you saved a copy of the setup file when you originally installed your printer you can use it to run the setup. This file, "**Mac-MX720-1_0-mcd.dmg**" is located in the **Downloads** folder. Double-click the file, then the setup icon to start the installation.

If you did not save the file to your computer when the printer was first installed, you can use the Setup CD-ROM to install. You will be installing the printer the same way as the initial install.

[Click here to access the Initial Setup Instructions.](#)

Connecting to the Wireless Network

2. Click **Next** to install the helper tool.

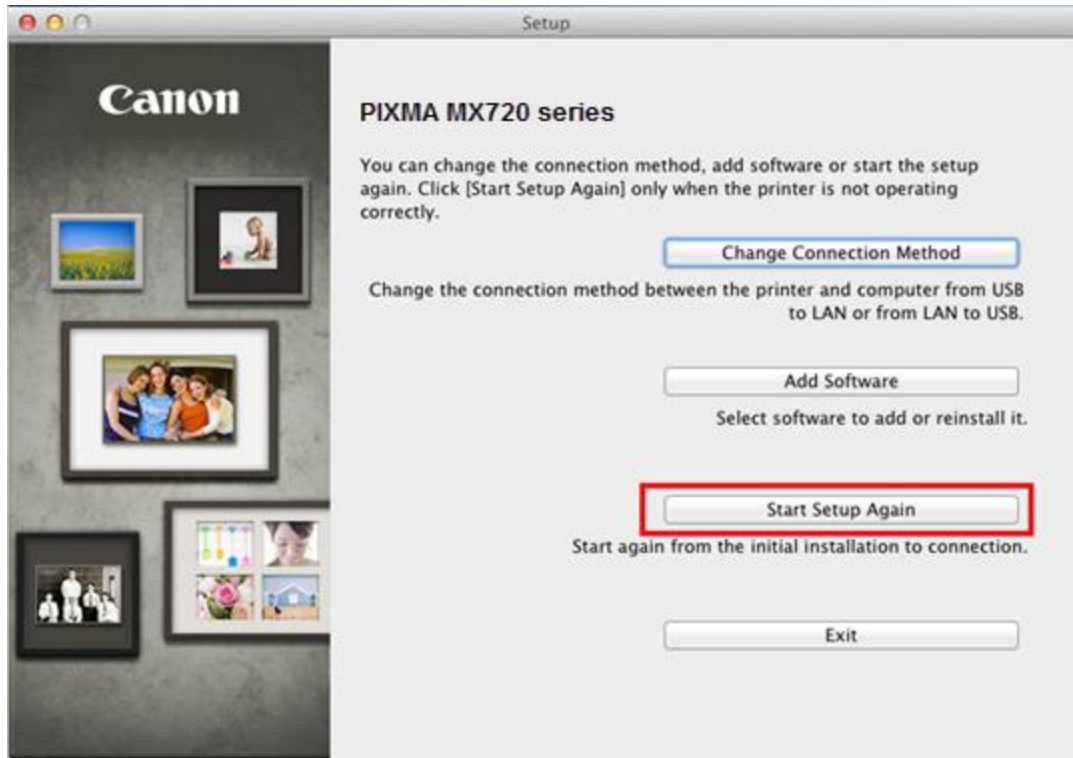


3. In the subsequent screen, enter the administrator name and password. Then click **[OK]**.



Connecting to the Wireless Network

4. If the following screen appears, click **Start Setup Again**




Go to the next page

Connecting to the Wireless Network

5. Continue following instructions. Click **Network Connection** on **Connection Method Selection**

1 -1 Connection Method Selection

Select a method to connect the printer.



Select this option when using the printer with a computer over your **Network** (LAN), or when sharing the printer with other computers. An **access point** (or **router**) is required.

6. Click **Wireless Connection**

1 -2 Connection Method Selection

Select a method to connect the printer.



Select this option when using the printer with your computer via **Wi-Fi** (without using a cable), or when sharing the printer with other computers. An **access point** (or wireless **router**) is required.

7. Follow any instructions and Click **Connect to the Network** when the **Printer Setup** window appears .

2 -1 Printer Setup

Connect the printer to the **network**.
Click [here](#) for notes on **wireless connection**

Start setup

Connect to the network

8. Follow any instructions. Pay particular attention to the instruction in the **Setup Procedure Selection (3-1)** if setup detects a WPS access point. Continue to the next page for important information on the Setup Procedure Selection. Do not proceed past the **Setup Procedure Selection (3-1)** step until reading the information on the next page.

9. The printer automatically searches for access points that support **WPS** (Wi-Fi Protected Setup)*. If a **WPS** access point is detected, the **Push Button Method** screen (shown below on left) will appear on the machine's operation panel

*Unless you are absolutely sure your access point supports WPS and you are familiar with activating this on your access point, **press the Stop button** on the printer's operation panel and click on **Other Methods** on the **Setup Procedure Selection** screen (screenshot shown below)*.

If the **Push Button Method** is not shown on the printer's operation panel (when no WPS access points have been detected), select **Standard setup** on the printer's operation panel, then click **Other Methods** on the **Setup Procedure Selection** screen

3 -1 Setup Procedure Selection

The printer will automatically search for **access points** supporting **WPS**.

Click the method below that matches the screen displayed on your printer.

* If the Push Button Method screen is displayed on the printer
When you are unsure if your access point or **router** supports this technology, press the **Stop** button.
When the printer screen changes from left to right, click [here](#)
Proceed to the screen for Standard setup.

[Push Button Method](#)

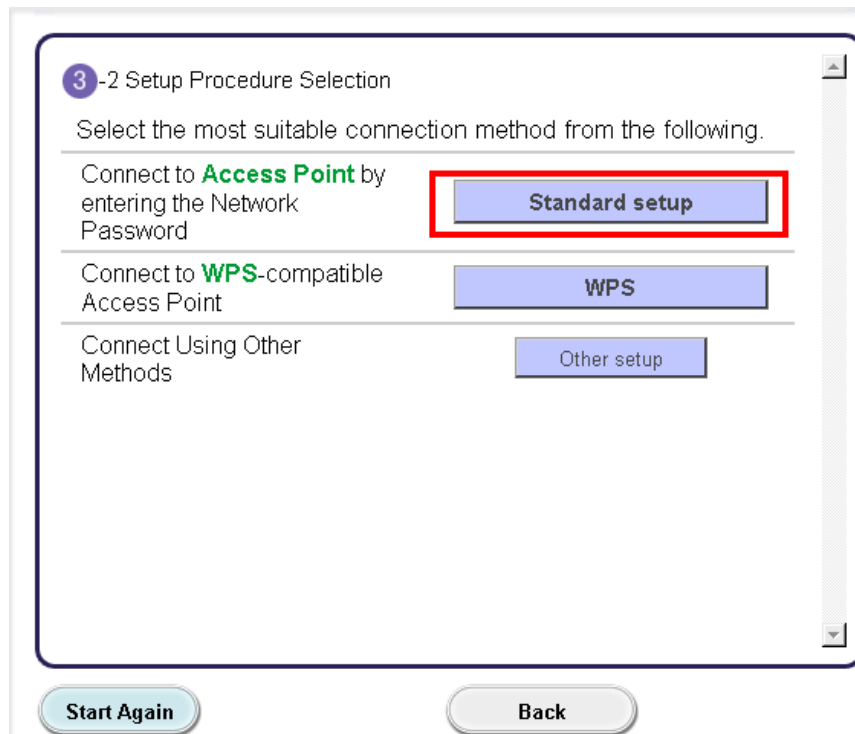
[Other Methods](#)

If you selected the **Push Button Method**, continue to follow any instructions until the **Completion of Connection** screen appears. [Click here to skip ahead to the Completion of Connection.](#)

If you selected **Other Methods**, please continue to the next page for important information

For Standard setup only

Select **Standard setup** on the **Setup Procedure Selection** screen (3-2)

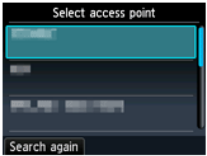


Continue to next page before proceeding any further with setup

Follow On-screen instructions. When you get to Step 4-2 and later in Step 4-4 (screens shown below) you will need to know SSID and password information*

Step 4-2

4 -2 Connection via Standard setup




1. Select your **access point**, then press the **OK** button.
If another screen appears, refer to "Troubleshooting" on the right.

If you don't know your access point name ▶▶▶ **Confirm the access point name (automatic display)**

Select the automatically displayed access point name in the printer screen.

Step 4-4

4 -4 Connection via Standard setup



1. Enter the **network password (WEP key or passphrase)**.
Character entry is case-sensitive so be sure to confirm. Click [here](#) for details on how to enter characters and how to change the character type.

If you don't know the network password for your **access point** ▶▶▶ **Confirm the network password (automatic display)**

Enter the automatically displayed network password in the printer screen.

2. Press the left **Function** button (A).

*Unless you are absolutely certain of this information, please continue to the next page for information on locating / verifying this information

Connecting to the Wireless Network

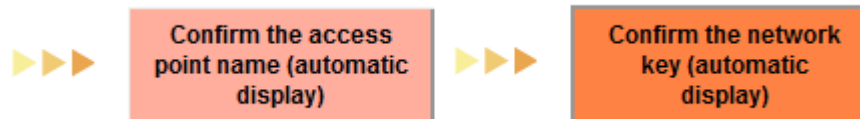
[<< Previous](#)

[Next >>](#)

If you don't know your Access Point / Router name or SSID*, or the Passphrase or Network key for your wireless network, you can find this information during Standard setup using the Setup CD-ROM or the downloaded files (Mini Master Setup or Master Setup).

*The terms 'SSID' and 'AccessPoint / Router' refer to a name used to identify the specific Access Point or Router. 'Passphrase' and 'Network Key' refer to a password required to prevent unauthorized access to communication.

Look for the **Confirm the access point name (automatic display)** or the **Confirm the network key (automatic display)** buttons during the setup procedure.



Clicking either of these buttons will give the needed information. On a Mac OS X system you may need to click 'Allow' on one or more windows after clicking either of the above buttons. See example below of the Wireless Lan Setup Information window. (appearance varies depending on Operating System). Use the provided information when selecting the Access Point / Router and for entering the Network Key.

Below is information about the access points detected from your computer.

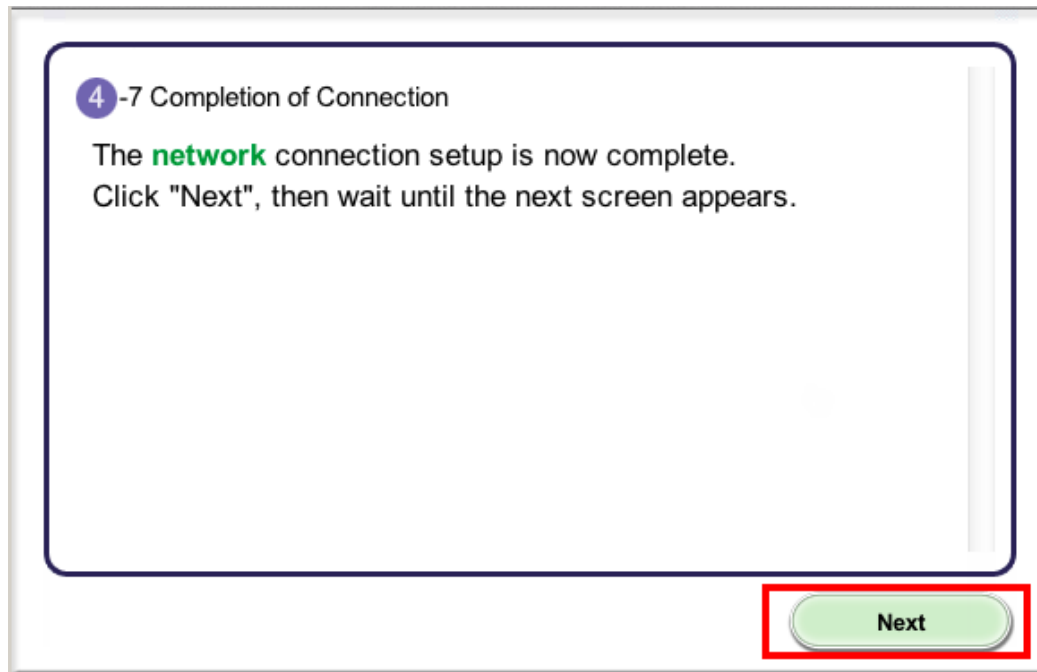
Wireless LAN Setup Information:

Access Point Na...	Network Key (Encryption Key)
YourNetName	YourPassPhraseorNetKey

OK

Installing the Drivers

10. Continue to follow any instructions until the **Setup Completion** or **Completion of Connection** screen below is displayed. Network connection setting is complete.



Click **Next**. Software will install. Continue to follow instructions until the **Add Printer** screen (shown on next page) appears.

11. Network setup is complete. Continue to follow any remaining On-screen instructions to install the software. On the Software Installation List screen, select any software to be installed. **MP Drivers** and **Canon IJ Network Tool** which are pre-selected are required for the printer to be able to be used over the network. **My Image Garden**, **Quick Menu** and **ScanGear** are highly recommended to take full advantage of your printer's features. It is not necessary to install any of the additional software if they were installed previously. Only **MP Drivers** and **Canon IJ Network Tool** need to be selected. Click **Next** after selecting the software.

Software Installation List

The selected software will be installed. Make sure that the software you want to install is selected. Click [Next].

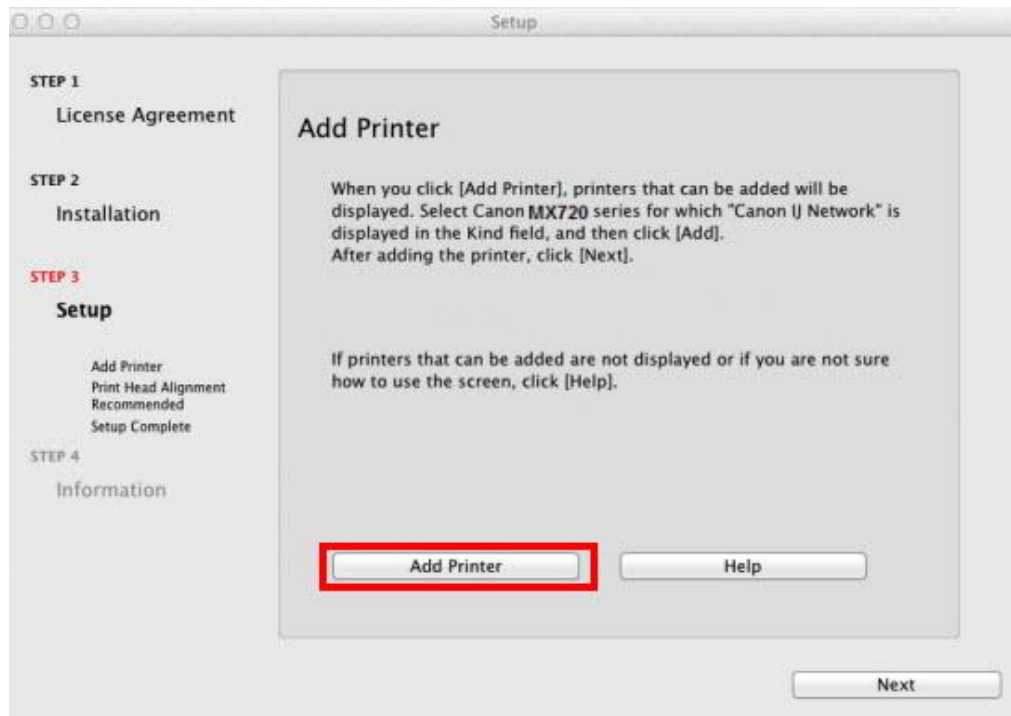
You need to install all the software below to use all functions of this printer.

<input checked="" type="checkbox"/>	MP Drivers	180 MB
<input type="checkbox"/>	ScanGear	80 MB
<input type="checkbox"/>	User's Manual	100 MB
<input type="checkbox"/>	My Image Garden	680 MB
<input type="checkbox"/>	Speed Dial Utility	10 MB
<input type="checkbox"/>	Quick Menu	25 MB
<input checked="" type="checkbox"/>	Canon IJ Network Tool	20 MB

Installing the Drivers

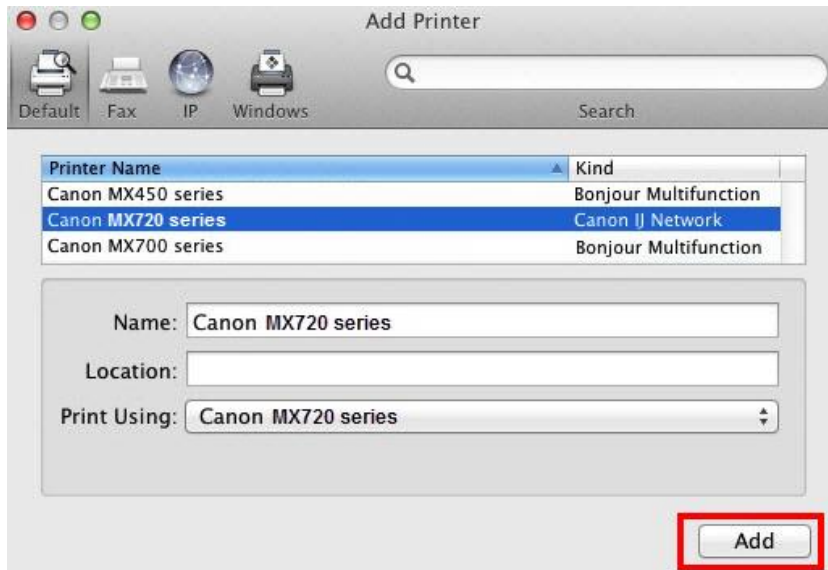
Add the Printer

1. Click **Add Printer** on the Add Printer Screen



Installing the Drivers

2. Select **Canon MX720 series** with **Canon IJ Network** listed in the **Kind** column*. Click **Add**.



*REFERENCE

If the machine is not detected, make sure of the following:

- The machine is turned on.
- The firewall function of any security software is turned off.
- The computer is connected to the access point.

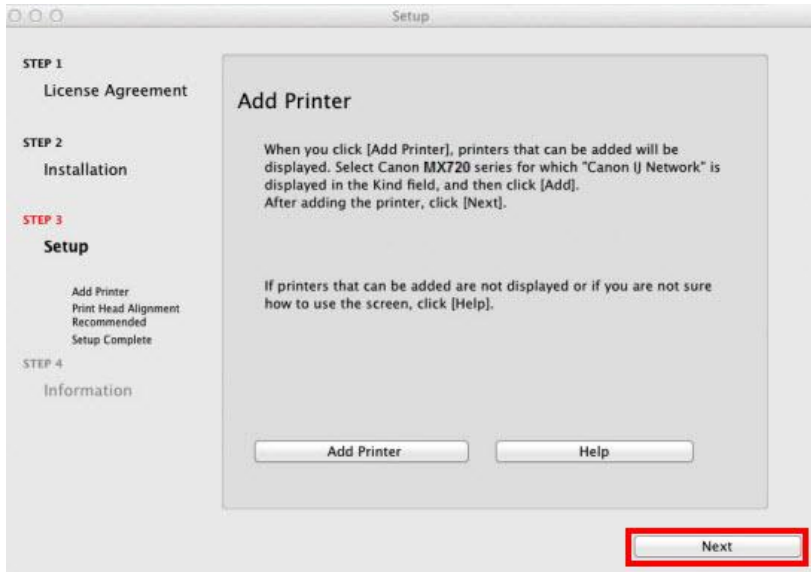
*CAUTION

If you will be installing the Canon printer driver on Mac OS X and using the printer through a network connection, you can select [**Bonjour**] or [**Canon IJ Network**] in the [**Add Printer**] dialog.

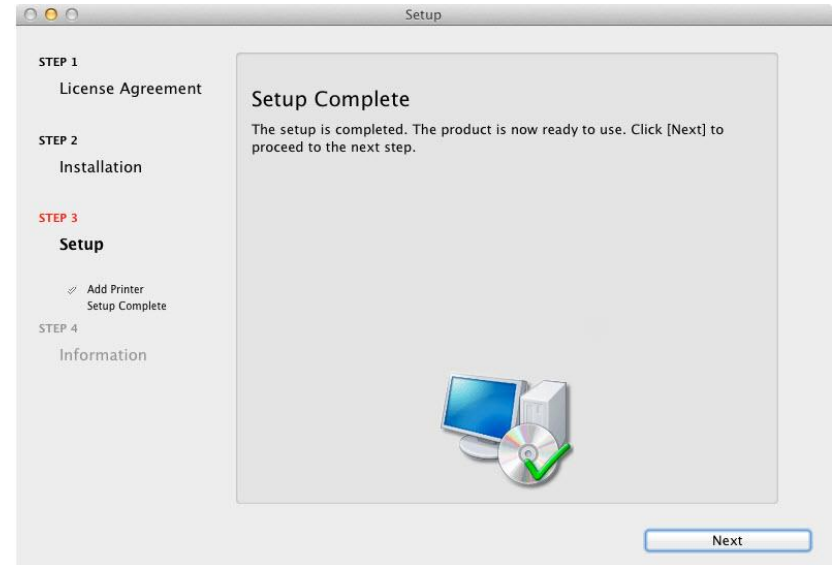
If [**Bonjour**] is selected, remaining ink level messages may differ from those indicated by [**Canon IJ Network**]. Canon recommends you to use [**Canon IJ Network**] for printing.

Installing the Drivers

4. Click **Next**.



5. Click **Next**.



Setup is complete. Click **Next** to finish the remaining information section.

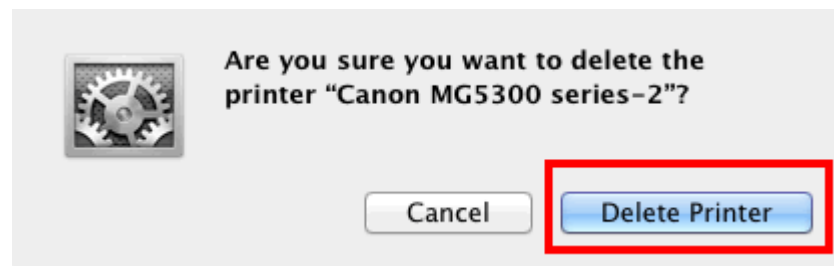
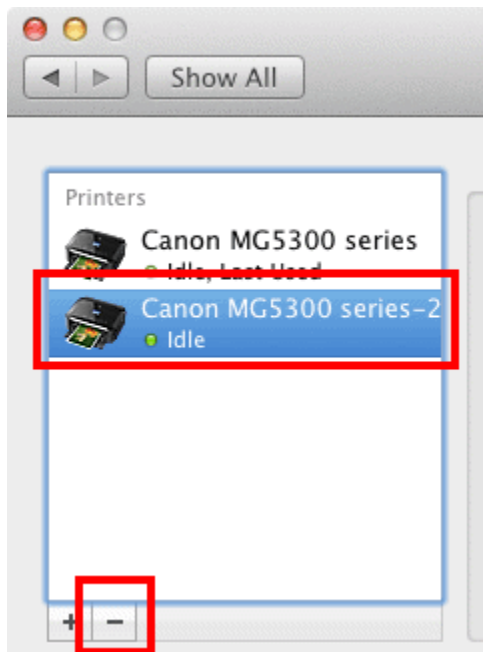
Deleting the Printer Listing

Open the applicable "Printers" window.

System Preferences -> Print & Fax

System Preferences -> Print & Scan (Lion / Mountain Lion)

To delete, highlight the printer in the list, click the minus(-) sign, then confirm the deletion. See example below.



*Name varies by model. 'MG5300 series' used in example. [Click here to return to instructions.](#)