

Getting Your Multifunction Back On Your Network After A Router Or Network Change

PIXMA MP980 / PIXMA MP620

Windows OS

If any of the following situations exist, you will need to Uninstall and Re-Install the MP Drivers

- You have replaced your Router or Access Point
- You want to use a different wireless network
- Router settings have been changed.

Uninstalling and Re-installing Your Multifunction to Your Network

PIXMA MP980 / PIXMA MP620
Windows OS

Uninstalling the Multifunction Drivers	4
Preparing to Connect My Multifunction to My Network	6
Downloading & Installing the Drivers	11
Downloading the Driver	11
Installing the Driver	13
Setup the Machine and the Computer	15

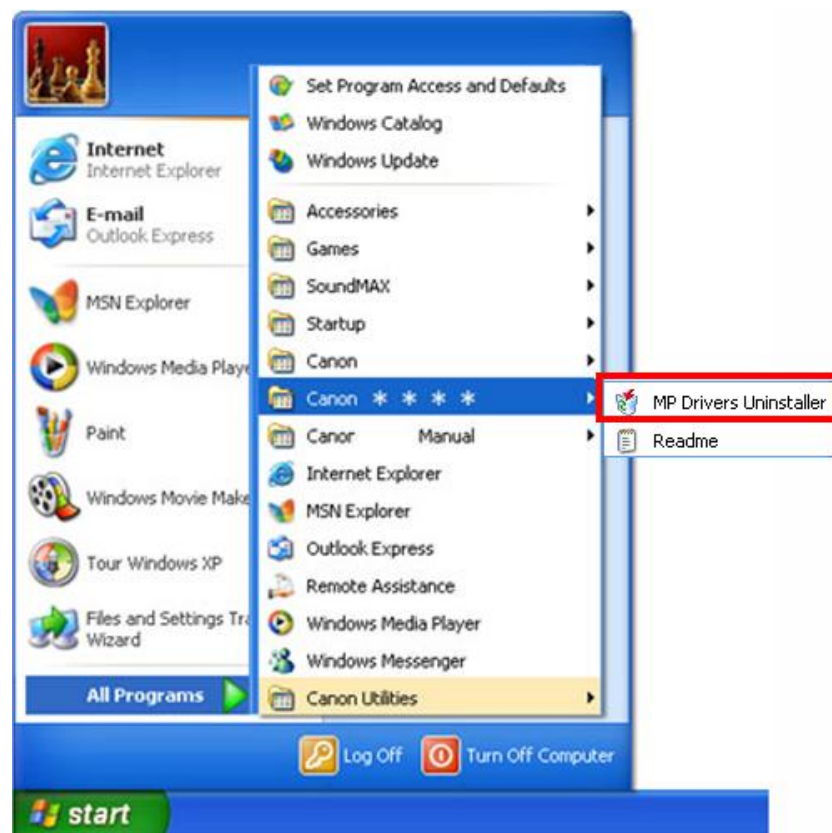
Uninstalling the Multifunction Drivers

[<< Previous](#)

[Next >>](#)

Note: Login as a user with Administrator privileges to uninstall . Turn off any programs running in the background, such as antivirus programs and firewalls before beginning.

1. Select 'Program' (for Windows 2000), or 'All Programs' (for Windows XP / Vista / 7) from the Start menu.
2. Select the name of the printer model to remove and select 'MP Drivers Uninstaller.'

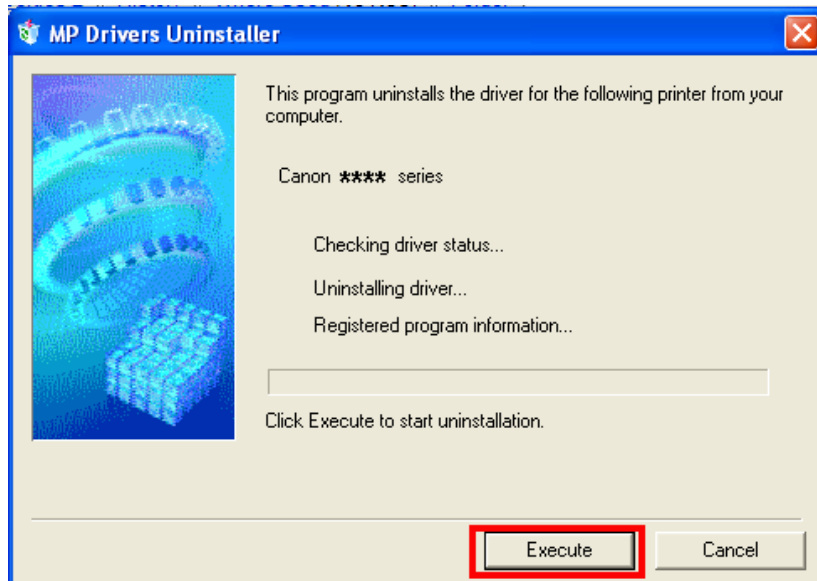


Uninstalling the Multifunction Drivers

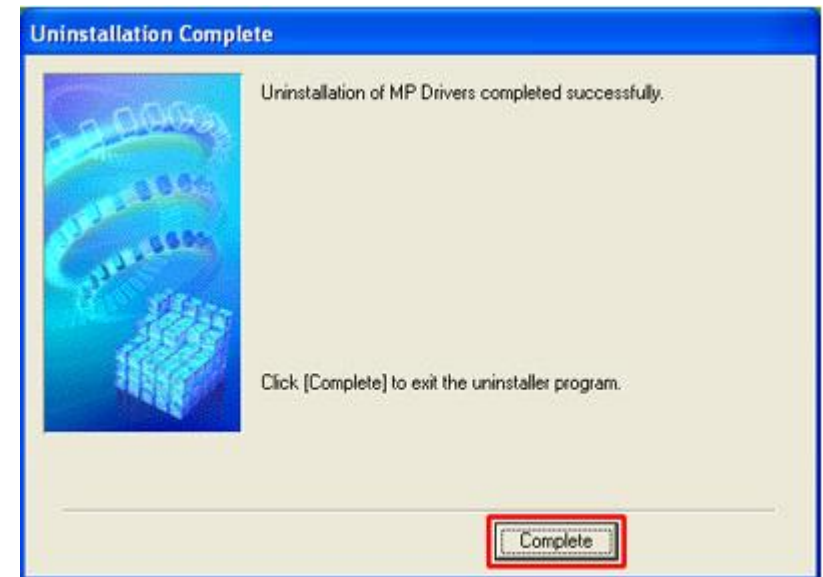
[<< Previous](#)

[Next >>](#)

3. When the MP Drivers Uninstaller window is displayed, click 'Execute.'



4. When the confirmation window is displayed, click 'Yes.'
5. When the Uninstallation Complete window is displayed, click 'Complete.'



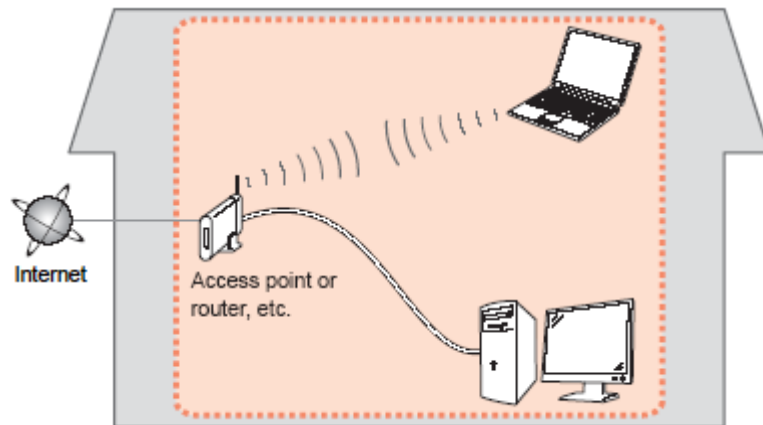
Preparing to Connect My Multifunction To My Network

[<< Previous](#)

[Next >>](#)

Network Requirements

Before connecting the machine to the network, make sure that configuration of the computer and access point or router is complete, and that the computer is connected to the network.



Notes on Network Connection

- The configuration, router functions, setup procedures and security settings of the network device vary depending on your system environment. For details, refer to your device's instruction manual or contact its manufacturer.
- The machine cannot be used over a wireless and wired connection at the same time.

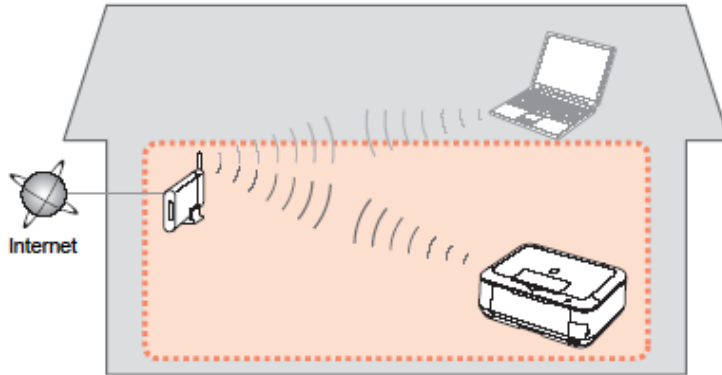
Wireless Connection

Connect to your network environment over a wireless connection.

Preparing to Connect My Multifunction To My Network

[<< Previous](#)

[Next >>](#)



An "Ad-hoc connection," which establishes a direct connection to the computer over a wireless connection without using an access point, is not supported.

Be sure to prepare an access point.

Important Information You Need Before Adding Your Multifunction

The following information is required to connect to your access point or router.

- **Access Point Name/Network Name:**

Also referred to as **SSID**. A name to identify the specific access point.

- **Network Key:**

Also referred to as encryption key, WEP key or WPA/WPA2 passphrase, Pre-Shared key.

A password is required to prevent unauthorized access to communication.

Check your access point or router for the following information, and then write it down.

NOTE: For details on how to check the following information, refer to the manual of your access point or router, or contact its manufacturer.

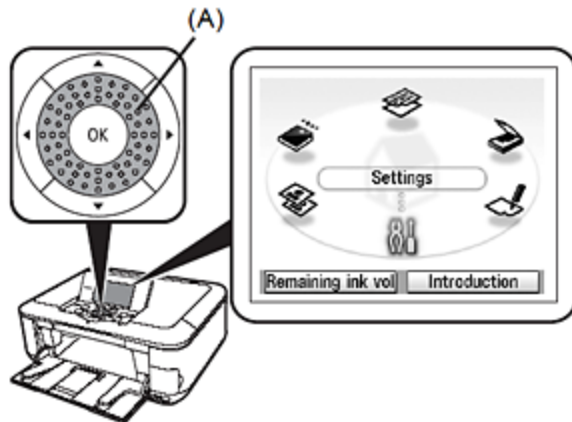
Preparing Your Multifunction

Note : The procedures below are for Wireless LAN setups **not** using the WPS (Wi-Fi Protected Setup) or WCN (Windows Connect Now) setup methods

At this point the USB cable should not be connected between the computer and printer.

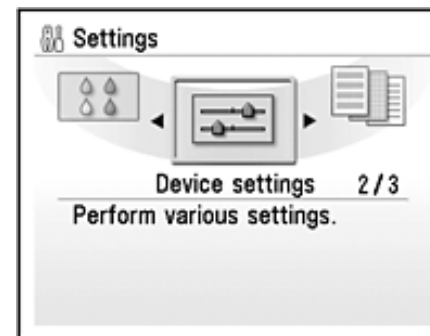
Step One

Use the Easy-Scroll Wheel (A) or the ◀ or ▶ button to select Settings, then press the **OK** button.



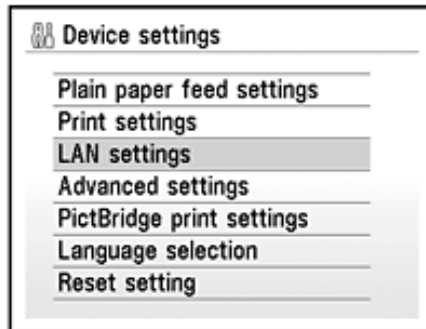
Step Two

Select Device settings, then press the **OK** button.



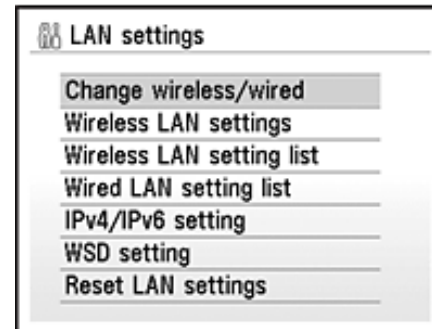
Step Three

Select LAN settings, then press the **OK** button.



Step Four

Select Change wireless / wired, then press the **OK** button.

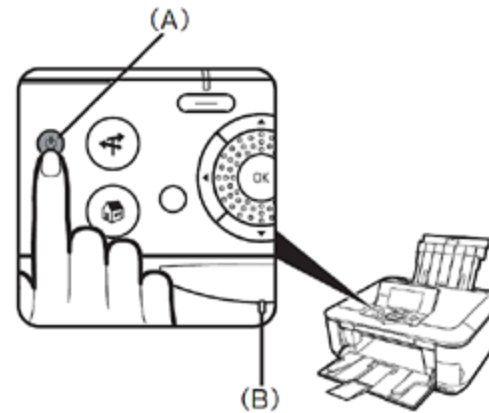


Step Five

Select Wireless LAN active, then press the **OK** button.

Step Six

Press the **On** button to turn off the printer. Connect the USB cable to the printer and computer



Downloading the Driver

To use the machine by connecting it to a computer, software including the drivers needs to be copied (installed) to the computer's hard disk. The installation process takes about 20 minutes. (The installation time varies depending on the computer environment or the number of applications to be installed.)

Step One

Go to the Canon USA Download Library

[Click here to go to the MP980 download library page](#)

[Click here to go to the MP620 download library page](#)

Step Two

In the **Drivers / Software Selection** section, select your operating system in the **Select OS** dropdown menu.

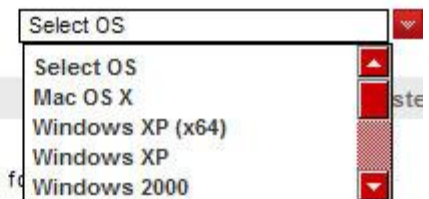
Drivers & Software

Choose an operating system from the drop down menu then select the appropriate driver from the list below

Choose Operating System:

Firmware

No firmware updates are available for




Step Three

In the Drivers section, click the link (red printing when you mouse over it) for the **MP Driver for Network**.

Choose Operating System:

Drivers	Date Posted
mp980swin64xps528ej.exe MP980 series XPS Printer Driver Ver. 5.28 (Windows 7 x64/Vista64)	08/05/2010
mp980swin64ns103en.exe MP980 series MP Driver Ver. 1.03 for Network (Windows 7 x64/Vista64)	02/18/2010
mp980swin64103ej.exe MP980 series MP Driver Ver. 1.03 (Windows 7 x64/Vista64)	02/12/2010



NOTE: The driver names will vary based on model and operating system (OS) selected. Make sure you have selected the correct OS and select the driver that states “for Network.”

Step Four

On the next screen, read the information and instructions and click **I Agree - Begin Download**. Once the file has been downloaded, double-click it to begin the installation process.

IMPORTANT:

- Quit all running applications before installation.
- Log on as the administrator (or a member of the Administrators group).
- Do not switch users during the installation process.
- Internet connection may be required during the installation. Connection fees apply.
- It may be necessary to restart your computer during the installation process. Follow the on-screen instructions. The installation resumes once your computer has restarted.

If the firewall function of your security software is turned on, a warning message may appear that Canon software is attempting to access the network. If such a warning message appears, set the security software to always allow access.

Installing the Driver

NOTE: If a **User Account Control** screen appears, click **Continue** or **Yes** (depending on Windows version) to continue.

NOTE: If the same screen reappears in subsequent steps, click **Continue** or **Yes**.

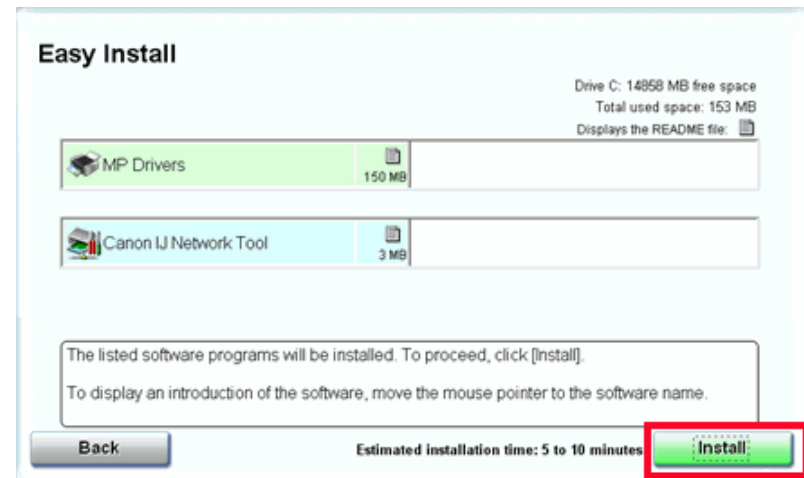
Step One

Click **Easy Install**.



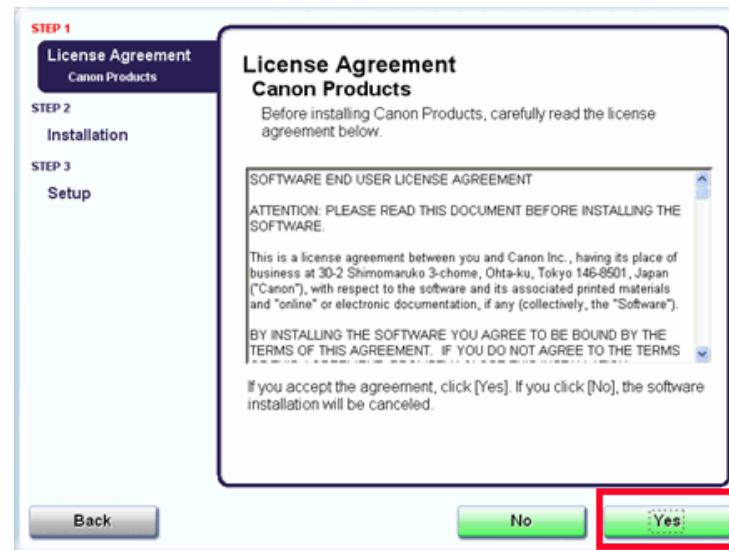
Step Two

Click **Install**.



Step Three

Read the License Agreement screen carefully and click Yes.

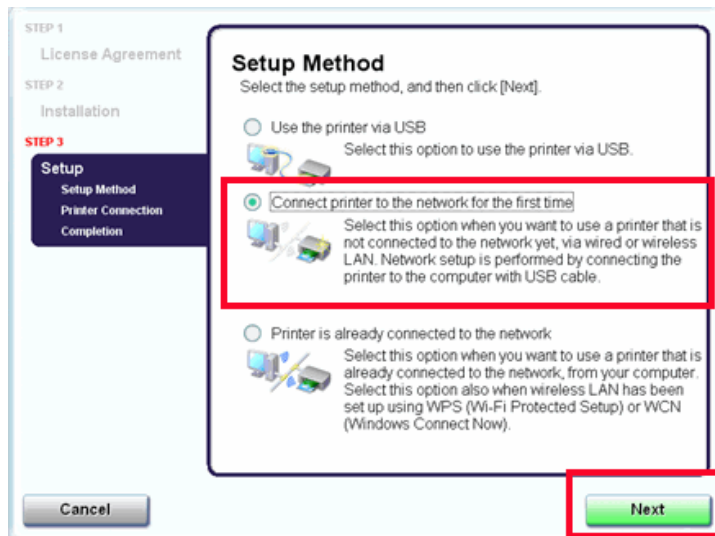


Installation starts. Follow any on-screen instructions to install the software.

Setup the Machine and the Computer

Step One

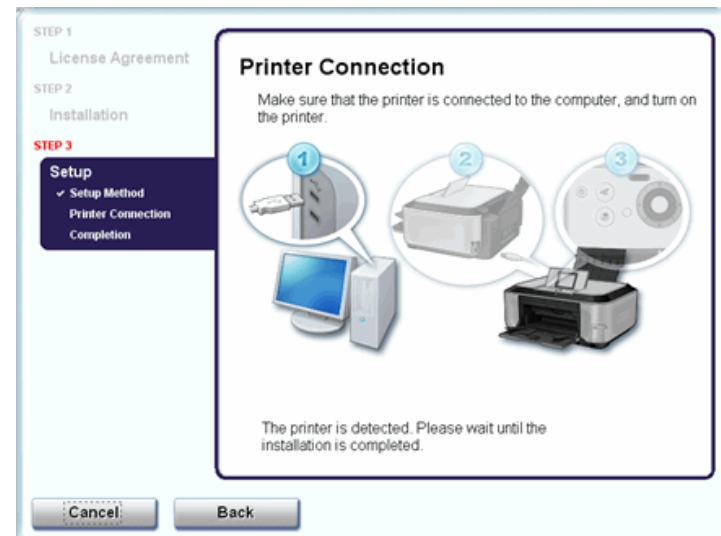
On the **Setup Method** screen, select **Connect printer to the network for the first time**, then click **Next**.



When a confirmation screen for the machine's LAN setting appears, click **OK**.

Step Two

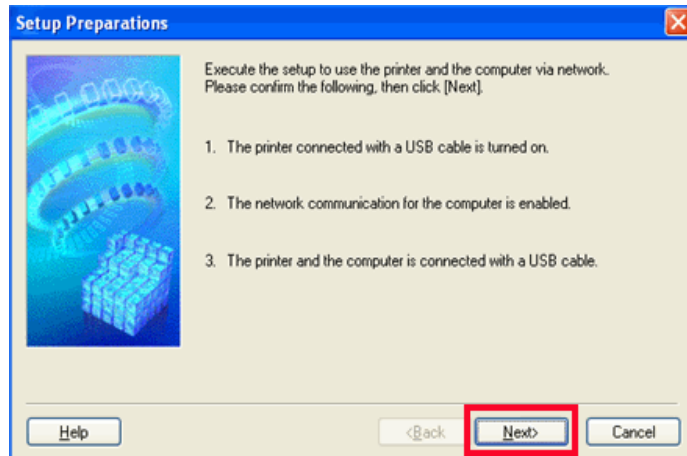
When the Printer Connection screen appears, connect the machine to the computer with a USB cable, then turn on the machine.



Set up the machine over a USB connection until the network connection is complete.

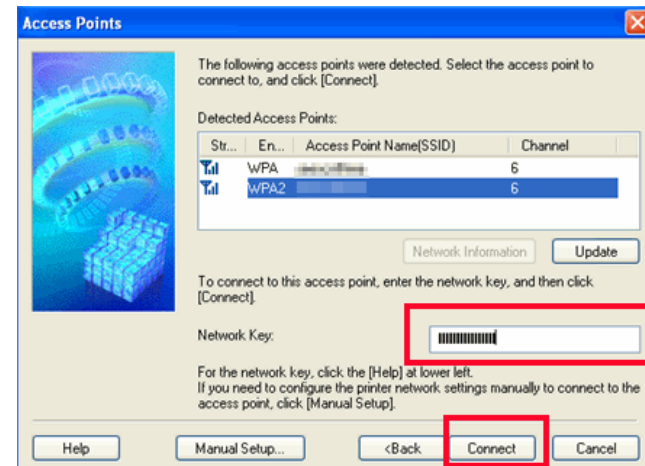
Step Three

When the **Setup Preparations** dialog box appears, confirm that preparation is complete, then click **Next**.



Step Four

Detect Access Point.



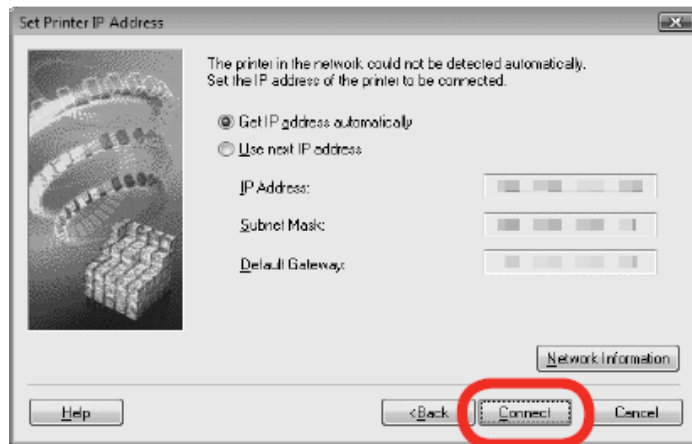
When the **Access Points** screen appears, select an access point to use, then click **Connect**.

When an access point is detected automatically, the **Access Points** screen **does not** appear. Go to step 5.

To connect to the access point with WEP or WPA displayed in the Encryption column, enter the network key (WEP key or WPA key) in Network Key, then click Connect.

Step Five

Detect the Machine

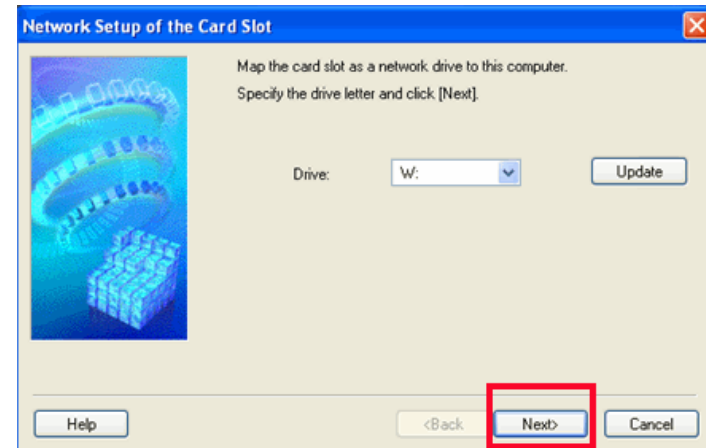


When the Set Printer IP Address screen appears, click **Connect**.

If the machine is detected automatically, the Set Printer IP Address screen **does not** appear.

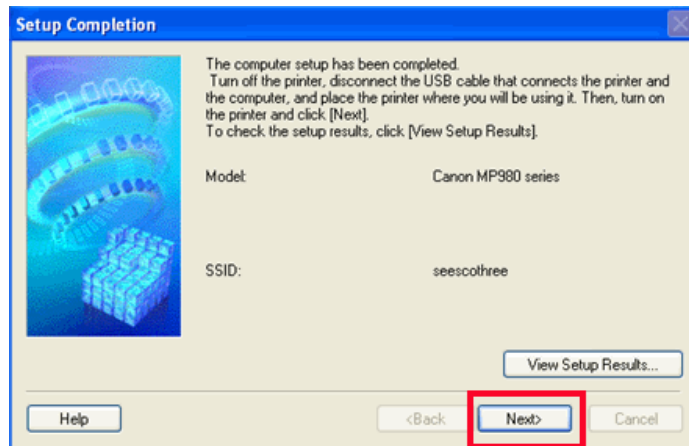
Step Six (Windows XP/2000 Only)

When the **Network Setup of the Card Slot** dialog box appears, specify the drive letter, then click **Next**.



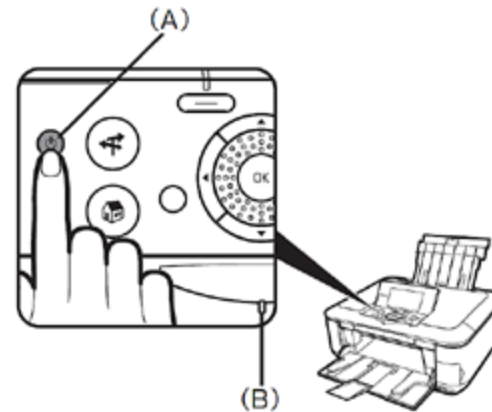
Step Seven

When the **Setup Completion** dialog box appears, remove the USB cable, then click **Next**.



Step Eight

Turn off the machine, place the machine in the location where you will use it, and turn it back on again.



Step Nine

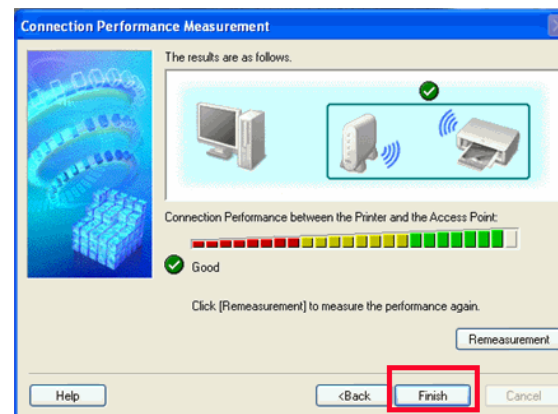
On the **Connection Performance Measurement** screen, click **Next**.


Measuring of the communication status starts, and the results are displayed.


Measuring takes a few minutes. You can cancel measuring by clicking Cancel. You also examine the detailed status of the communication link after setup by using the Canon IJ Network Tool.

Step Ten

Confirm the measurement results, then click **Finish**.



Ensure that  is displayed in Connection performance between the printer and the access point

If any symbol other than  is displayed, refer to displayed comments and Help for improving the status of communication link.

To check whether the new location is better, click **Remeasurement**. Measurement of the communication status is performed again.

When any message on Overall network performance appears in the measurement results, rearrange the printer and other network devices following the instructions on the screen.

Step Eleven

Click **Exit**. Setup is complete

