

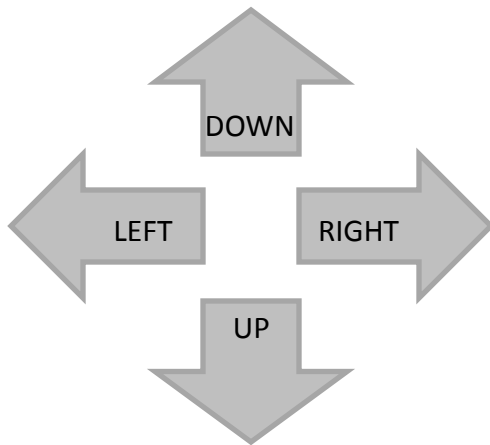


# Obtaining Your Network Key

PIXMA MP980 / PIXMA MX860 / PIXMA MP620

Mac OS

# Navigation Tips for Macintosh Users



To navigate this guide, please use the arrows on the MAC keyboard or use the PAGE UP and Page DOWN keys.

Page UP

Page DOWN

# Obtaining Your Network Key

PIXMA MP980 / PIXMA MX860 / PIXMA MP620

Mac OS

Introduction	4
Download the Canon PIXMA Wireless Setup Assistant	5
Using the Canon PIXMA Wireless Setup Assistant	7
Trouble Shooting	12

# Introduction

## Introduction

If you are unable to proceed past the **Access Points** screen during wireless setup because the required Network Key is not known, you may be able to retrieve the information using the **Canon PIXMA Wireless Setup Assistant**.

**IMPORTANT:** When you do not need this tool anymore, drag the file in the Trash, and delete it.

**NOTE:** The Wireless Setup Assistant is supported on Mac OS X 10.4 or greater

# Download the Canon PIXMA Wireless Setup Assistant

## Download the Canon PIXMA Wireless Setup Assistant

To use the machine by connecting it to a computer, software including the drivers needs to be copied (installed) to the computer's hard disk. The installation process takes about 20 minutes. (The installation time varies depending on the computer environment or the number of applications to be installed.)

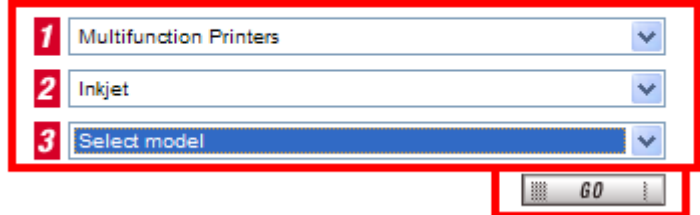
### Step One

Go to the Canon USA Download Library  
[Click here to go to the Canon USA download library](#)

### Step Two

Select **Multifunction Printers** in the first menu dropdown, **Inkjet** in the second and your model in the third. Click **Go**.

**PRODUCT MENU**  
Please choose the model from the dropdown menus below:



The screenshot shows a web form titled 'PRODUCT MENU' with the instruction 'Please choose the model from the dropdown menus below:'. There are three dropdown menus, each with a red number in a square to its left: 1, 2, and 3. The first dropdown menu is labeled '1 Multifunction Printers', the second is '2 Inkjet', and the third is '3 Select model'. Below the dropdown menus is a 'GO' button with a red border. The entire form area is enclosed in a red rectangular border.

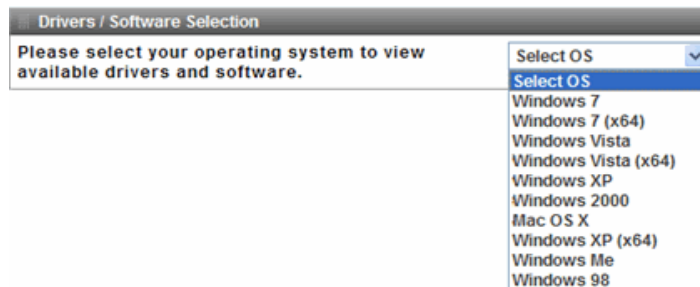
1	Multifunction Printers	▼
2	Inkjet	▼
3	Select model	▼

GO

# Download the Canon PIXMA Wireless Setup Assistant

## Step Three

In the **Drivers / Software Selection** section, select your operating system in the **Select OS** dropdown menu.



## Step Four

In the **Software** section, click the link to download the file **CanonAPChkTool**.

Canon PIXMA Wireless Setup Assistant (Macintosh)	1.0.0	1.40 MB	10/16/2009
<a href="#">CanonAPChkTool_osx100ben.dmg</a>			

## Step Five

On the next screen, read the information and instructions and click **I Agree - Begin Download**

Choose to "Save" the file. **Write down the file name and the location to where the file is being saved.**

# Using the Canon PIXMA Wireless Setup Assistant

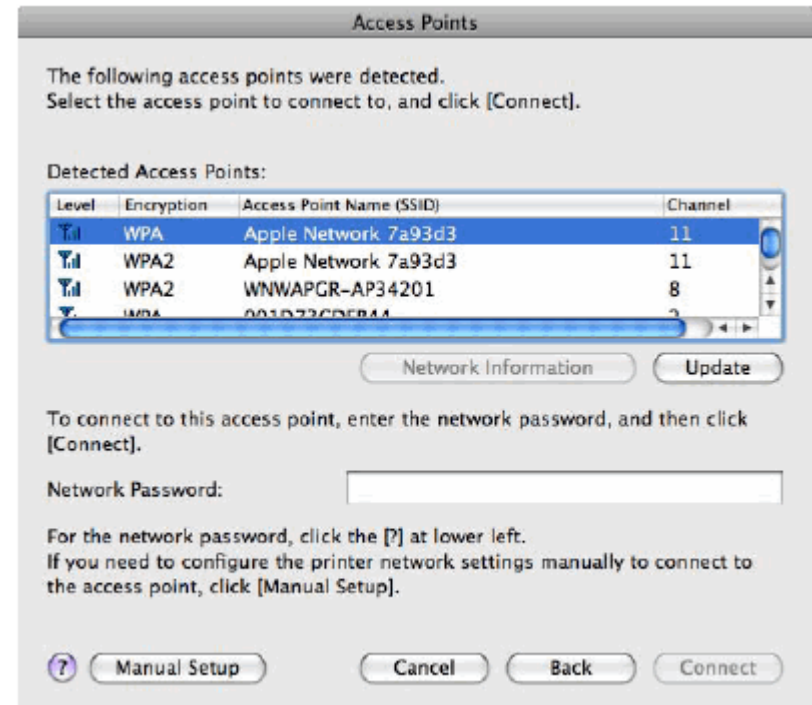
## Using the Canon PIXMA Wireless Setup Assistant

### Step One

Open the Access Points window.

#### If the Access Points window is closed:

1. If you are installing the latest driver from download, re-run the the driver/network installation by double-clicking the driver file you downloaded previously.
2. If you are installing from the CD-ROM, select Custom Install, printer driver / MP Drivers, and then perform the installation.



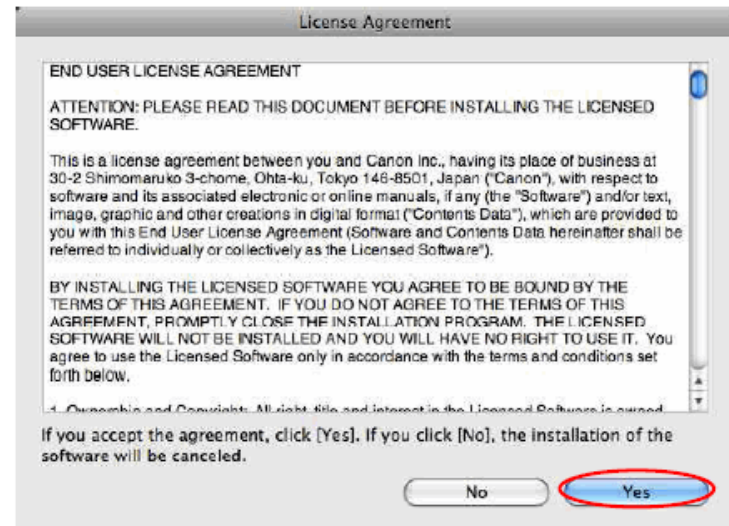
# Using the Canon PIXMA Wireless Setup Assistant

## Step Two

Run the downloaded tool **Wireless Setup Assistant** that you downloaded to the computer by double clicking its icon.

## Step Three

Read the License Agreement, and then click **Yes** when you accept the agreement.

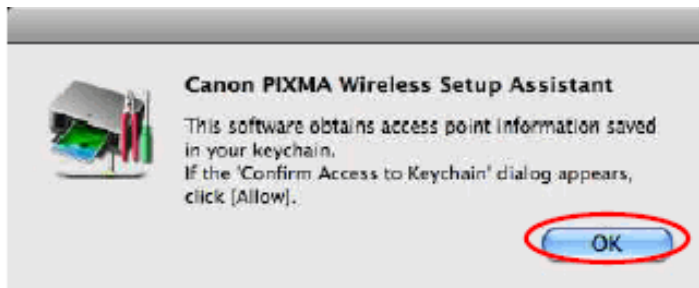




# Using the Canon PIXMA Wireless Setup Assistant

## Step Four

When the following dialog is displayed, click **OK**.



## Step Five

1. When the "Confirm Access to Keychain" dialog is displayed, click **Allow Once** in Mac OS X v10.4, **Allow** in Mac OS X v10.5/v10.6.
2. If the dialog is displayed more than once, click the above-mentioned button in each dialog.
3. **Do not click Always Allow**, the information will not be obtained properly.



<Mac OS X v10.4>



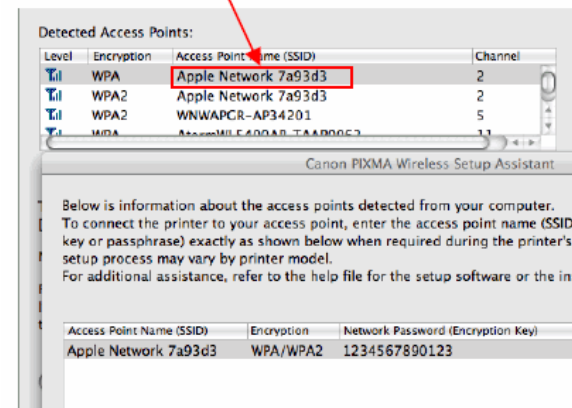
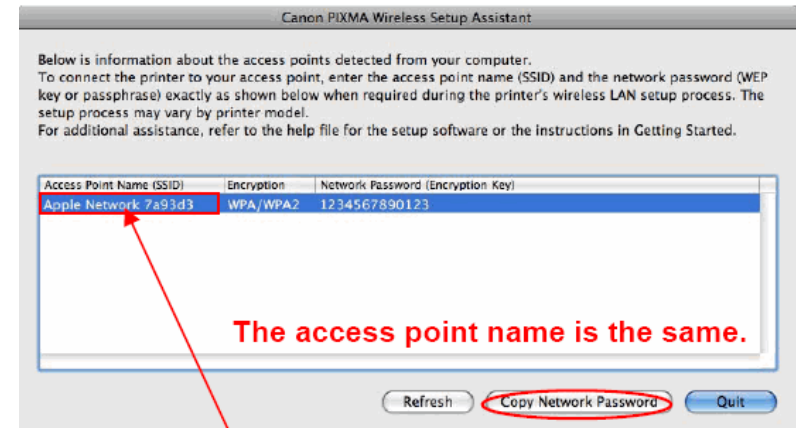
<Mac OS X v10.5/v10.6>

# Using the Canon PIXMA Wireless Setup Assistant

## Step Six

1. The "Canon PIXMA Wireless Setup Assistant" tool is launched.
2. Confirm that the same access points are listed in the Assistant and Access Point windows.
3. Write down the Network Password of the access point.

**NOTE:** The Network Password may be displayed with texts of the alphabets from A to F (base 16number). Write down it as-is.



# Using the Canon PIXMA Wireless Setup Assistant

## Step Seven

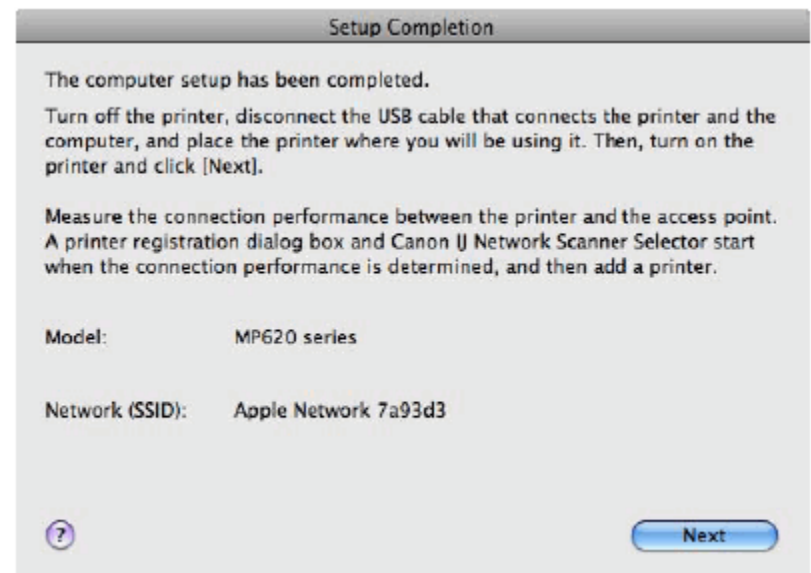
1. Click the access point name(s) specified in Step Four in the Access Point window (you will find the name(s) in "Detected Access Points" there.).
2. Click the **Network Password Input box**
3. Now enter or paste the network key (network password)

### NOTE:

- If you enter the password manually, verify that it is correct.
- If the same network names are displayed, select either one of them. (Either one will be fine.)
- To use the printer together with the multiple Access Points, click the Manual Setup button for setup instead of the Connect button.

## Step Eight

Click **Connect**. When the setup is completed, the Setup Complete dialog is displayed.



## Troubleshooting

If the message "**The Printer could not be connected to the specified access point**" is displayed when clicking the Connect button, you may have selected the network name (Access Point name (SSID)) you are not using (e.g. the one your neighbor is using). In such a case, please select the other one.

