

Installing Your Multifunction to Additional Computers on Your Network

PIXMA MP990 / PIXMA MP640 / PIXMA MP560

Windows OS

Installing Your Multifunction to Additional Computers on Your Network

PIXMA MP990 / PIXMA MP640 / PIXMA MP560
Windows OS

Downloading & Installing the Drivers

3

Downloading the Driver

Because your Multifunction printer has already been setup on another computer in your wireless network, it is only necessary to install the Drivers and software and register the printer and scanner. No further settings need to be made on the printer itself.

The installation process takes about 20 minutes. (The installation time varies depending on the computer environment or the number of applications to be installed.)

Step One

Go to the **Drivers & Software** for your model

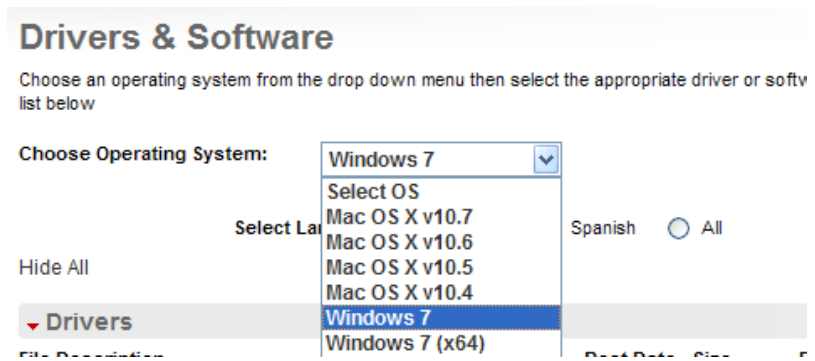
[MP640](#)

[MP560](#)


[MP990](#)

Step Two



Select your operating system in the **Select OS** dropdown menu.



Step Three

In the Drivers section, click the Download icon  for the **MP Driver**
***Name varies by model**

example: MP990

| ▼ Drivers | | | |
|--|-----------|---------|---|
| File Description | Post Date | Size | Download |
|  MP990 series MP Driver Ver. 1.04 (Windows 7/7.. File Name: mp990swin104ej.exe | 09/07/10 | 17.36MB |  |

* The file name turns red when the mouse pointer is on the file name

Step Four

On the next screen, read the information and instructions and click **I Agree - Begin Download**

Select [Save] or [Run]. If [Run] is selected, the file will be automatically installed

If [Save] is selected, once the file has been downloaded, double-click it to begin the installation process

IMPORTANT:

- Quit all running applications before installation.
- Log on as the administrator (or a member of the Administrators group).
- Do not switch users during the installation process.
- Internet connection may be required during the installation. Connection fees apply.
- It may be necessary to restart your computer during the installation process. Follow the on-screen instructions. The installation resumes once your computer has restarted.

If the firewall function of your security software is turned on, a warning message may appear that Canon software is attempting to access the network. If such a warning message appears, set the security software to always allow access.

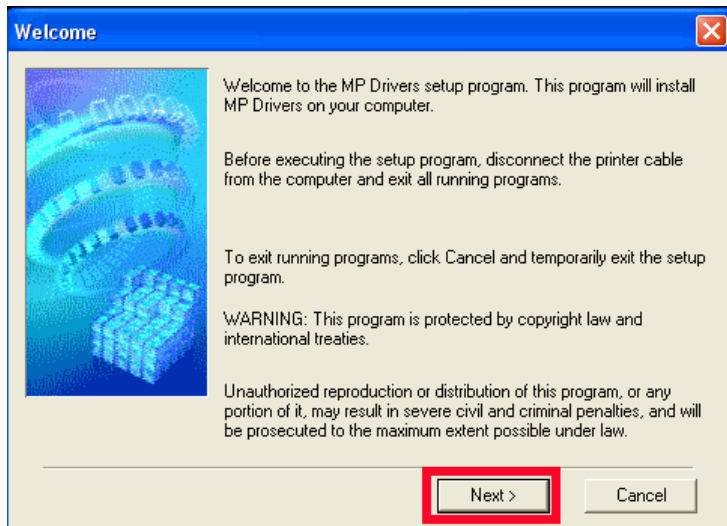
Installing the Driver

NOTE: If a **User Account Control** screen appears, click **Continue** or **Yes** (depending on Windows version) to continue.

NOTE: If the same screen reappears in subsequent steps, click **Continue** or **Yes**.

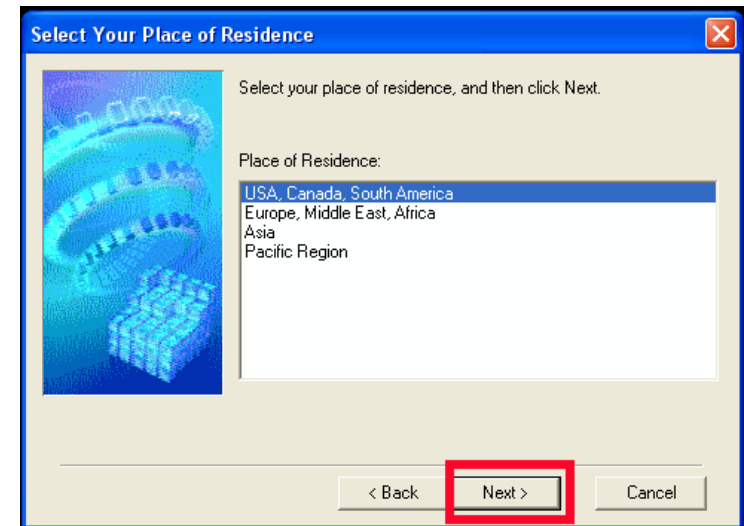
Step One

Click **Next** on the **Welcome** screen.



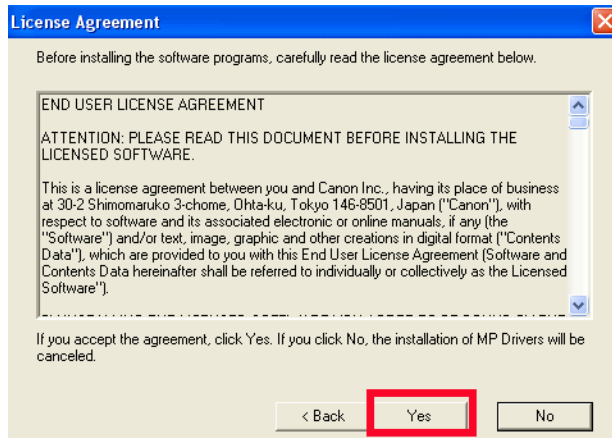
Step Two

Select your place of residence and click **Next**.

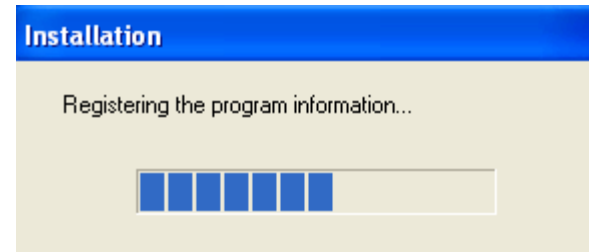


Step Three

Click **Yes** for the License Agreement.

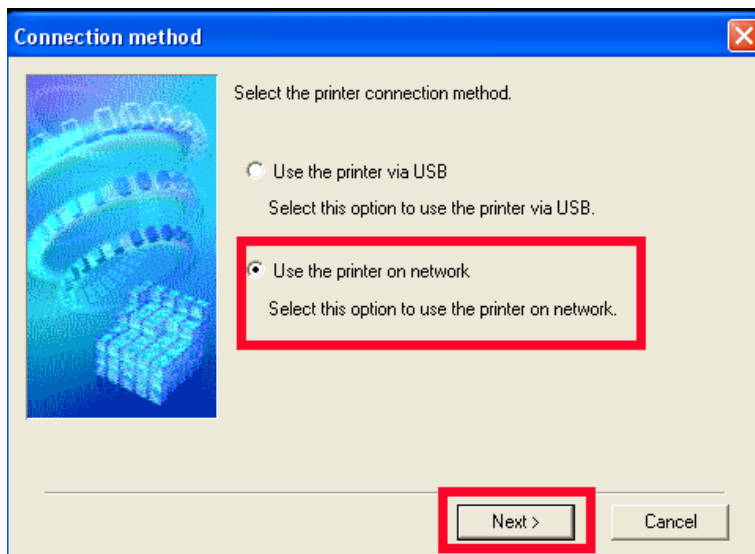


Installation proceeds



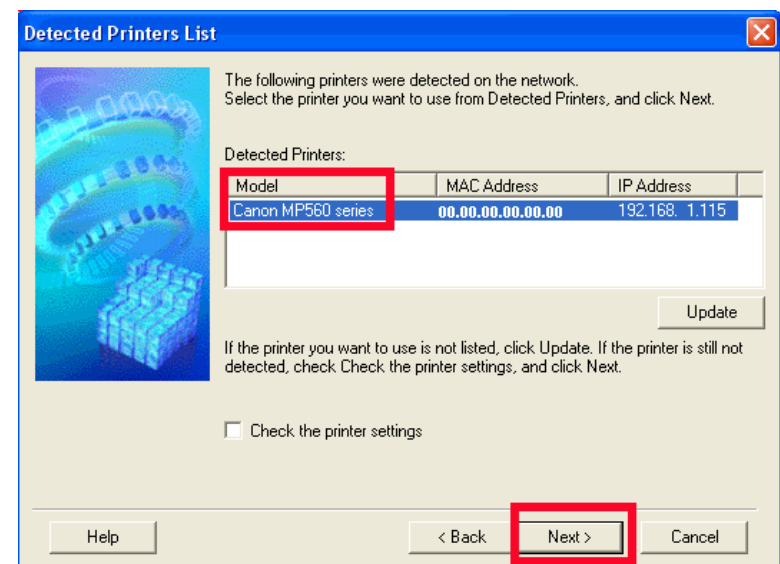
Step Four

Select **Use the Printer on network** on the **Connection method** screen, and then click **Next**.



Step Five

After searching for printers, the **Detected Printers List** appears. Verify your printer is detected and click **Next**.



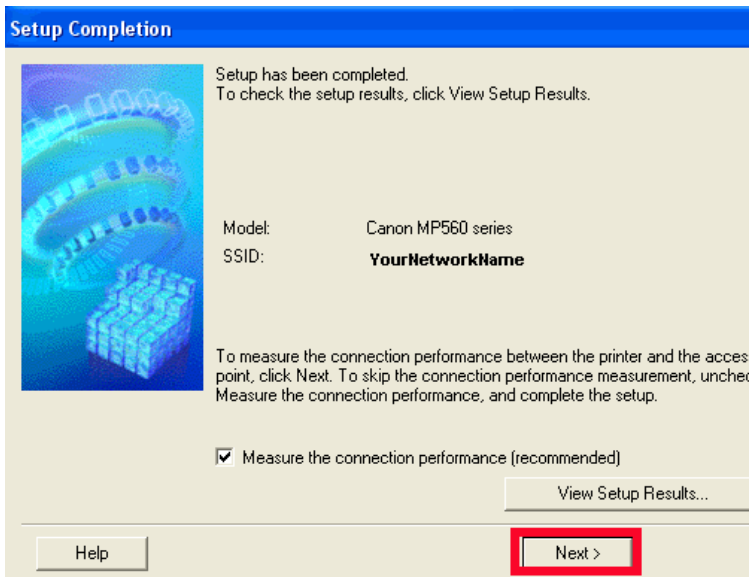
Downloading and Installing the Drivers

<< Previous

Next >>

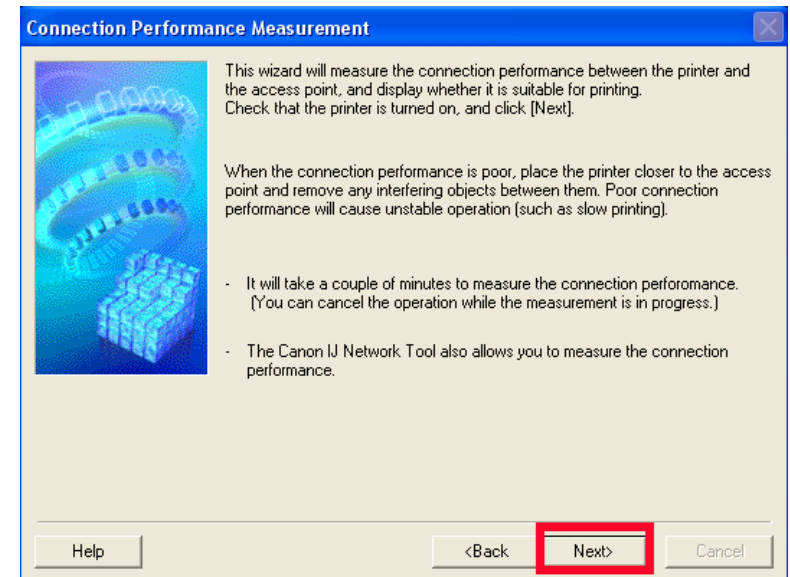
Step Six

Setup will install the driver components. After completion, click **Next** on the **Setup Completion** screen.



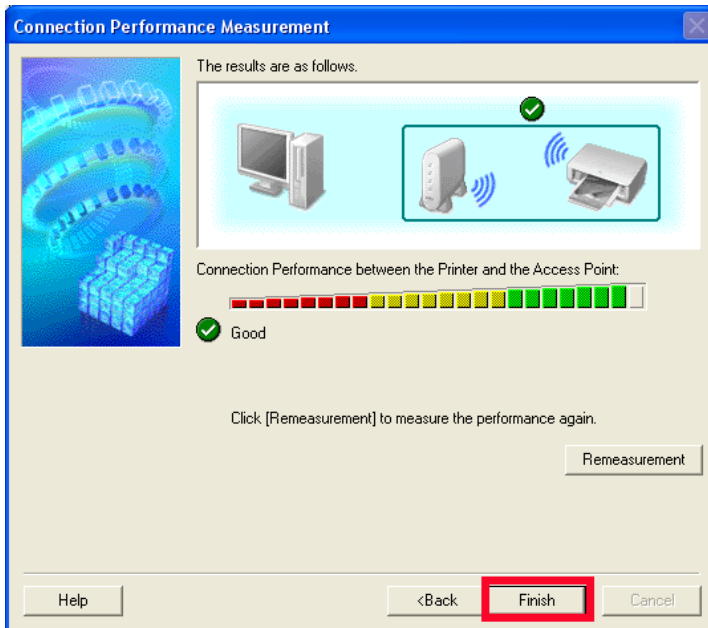
Step Seven


When the **Connection Performance Measurement** dialog box appears, click **Next**.




Step Eight

Confirm the measurement results, and then click **Finish**.



Ensure that  is displayed in Connection Performance between the Printer and the Access Point.

- If an icon other than  appears, improve the communication status by referring to the displayed message or the help file, then click **Remeasurement**.

If the following window appears, click OK to restart or Cancel to restart later

