



**Getting Your Multifunction
Back On Your Network
After A Router Or Network Change**
PIXMA MG2920

Mac OS

Important

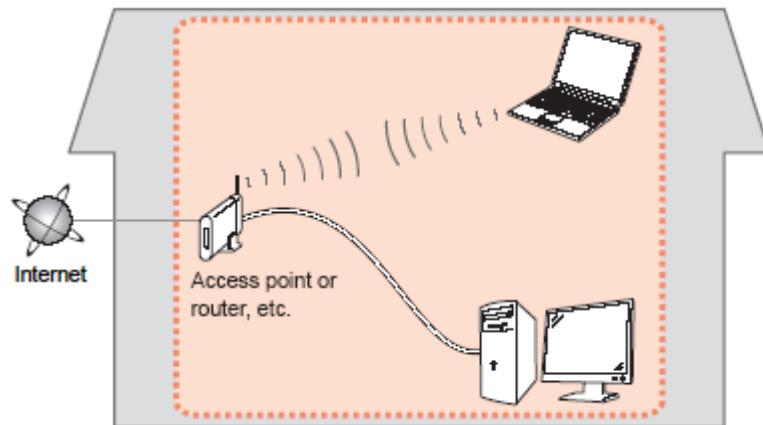
If any of the following situations exist

- You have replaced your Router or Access Point
- You want to use a different wireless network
- Router settings have been changed.

Please complete the following steps to apply the new configuration settings to your multifunction.

Network Requirements

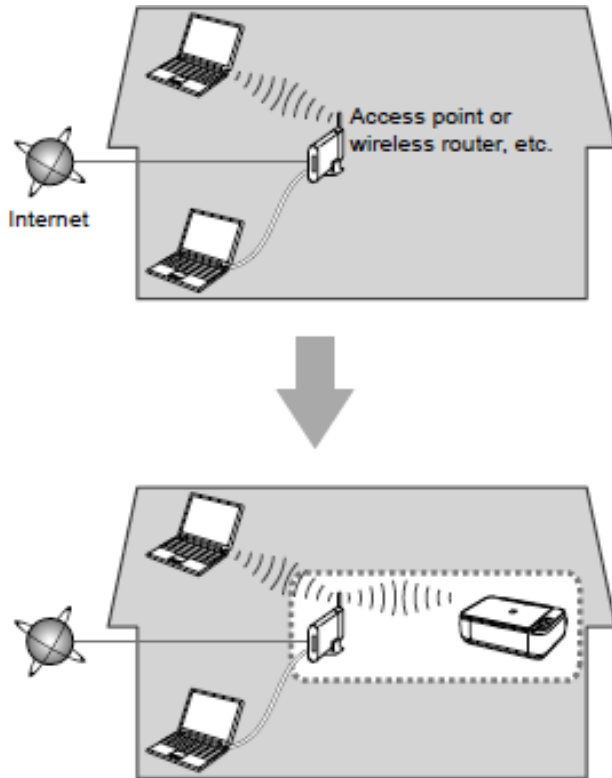
Before connecting the machine to the network, make sure that configuration of the computer and access point or router is complete, and that the computer is connected to the network.



Wireless Connection

Before connecting the machine to the network, the computer needs to be connected to the network. Make sure that configuration of the computer and access point or router is complete.

Preparing to Connect My Multifunction To My Network



Notes on Network Connection

- The configuration, router functions, setup procedures and security settings of the network device vary depending on your system environment. For details, refer to your device's instruction manual or contact its manufacturer.
- In an office setup, consult your network administrator
- If you connect to a network that is not protected with security measures, there is a risk of disclosing data such as your personal information to a third party.
- Place the machine and computer on the same network segment.

Installing the Drivers & Software

Software Installation

To use the machine by connecting it to a computer, software including the drivers needs to be copied (installed) to the computer's hard disk. Installation time varies depending on the computer environment or the number of application software to be installed.

IMPORTANT

- Log on as the administrator (or a member of the Administrators group).
- Quit all running applications before installation.
- Do not switch users during the installation process.
- Internet connection may be required during the installation. Connection fees may apply. Consult the internet service provider.
- If the firewall function of your security software is turned on, a warning message may appear that Canon software is attempting to access the network. If such a warning message appears, set the security software to always allow access.

Installing the Drivers & Software

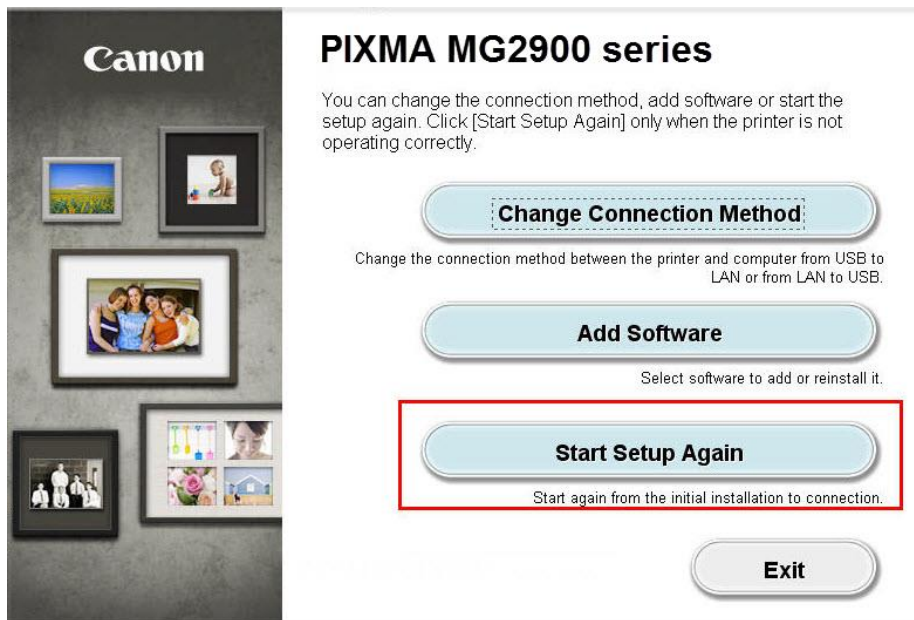
When you reinstall your printer on your network because of a router or network change, you follow the same procedure as for a first time install. A step-by-step walk through of the wireless setup is built into the installation routine of the software for your PIXMA.

To begin the reinstall of your PIXMA MG2920 to your wireless network, you must first download the software to your computer.

[Click here to download.](#)

After the file, mac-mg2900-1_0-mcd.dmg , has downloaded successfully, double-click it to start the install procedure.

If the following screen appears, click **Start Setup Again**.



Installing the Drivers & Software

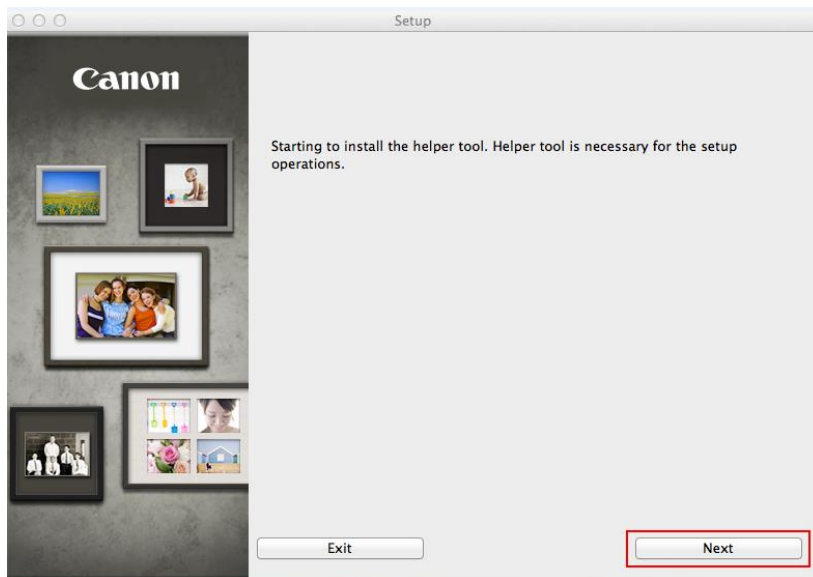
To begin setup of your PIXMA MG2920 on your wireless network, you must first download the software to your computer.

[Click here to download.](#)

After the file, mac-MG2900-1_0-mcd.dmg , has downloaded successfully, double-click it to start the install procedure.

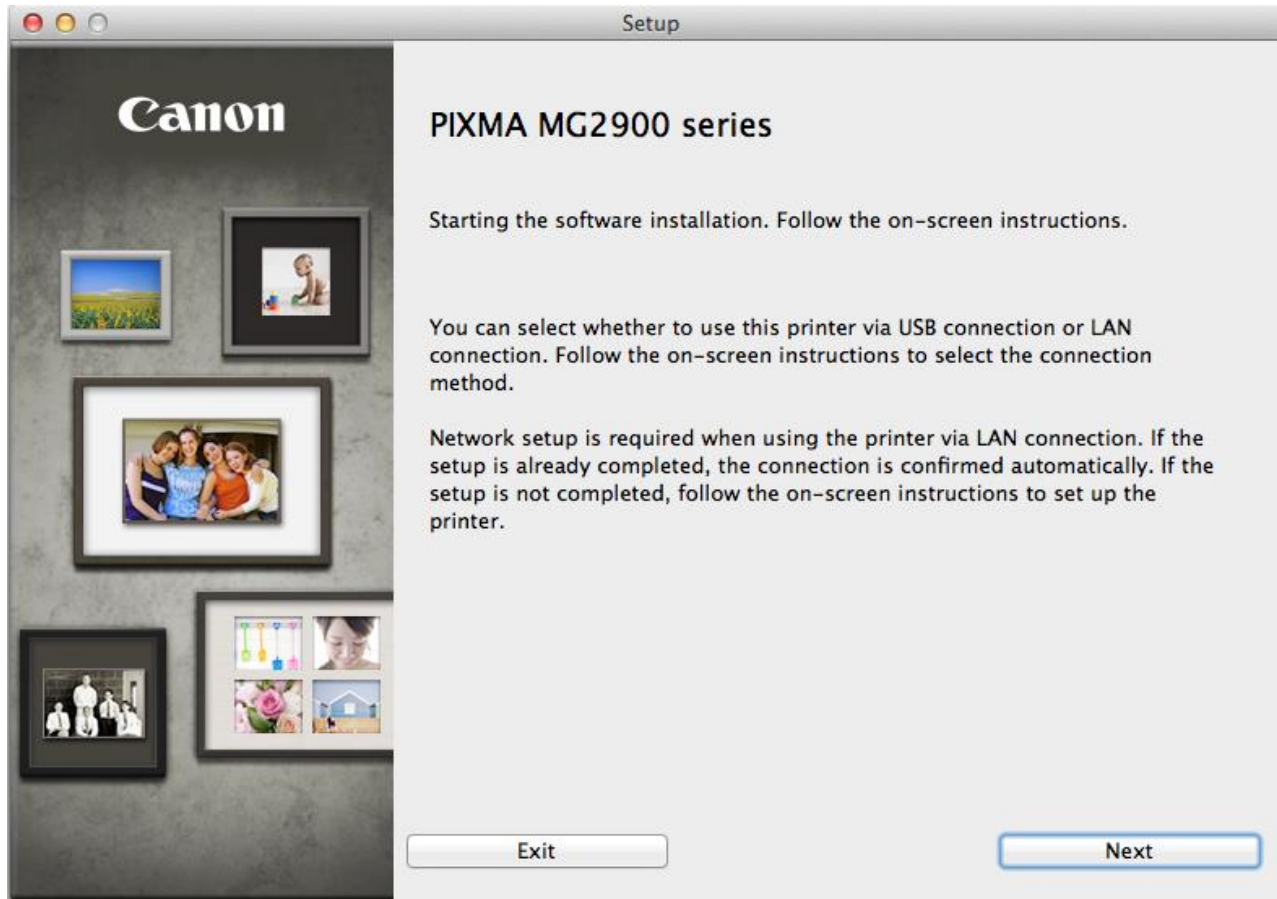
The setup instructions presented in this document describe the “**Cableless Setup**” method which does not require the need to know the SSID (network name), or network passphrase and does not require the printer to be temporarily connected to the computer with a USB cable.

Click **Next** on the first screen. If prompted, enter the Administrative Password to continue.



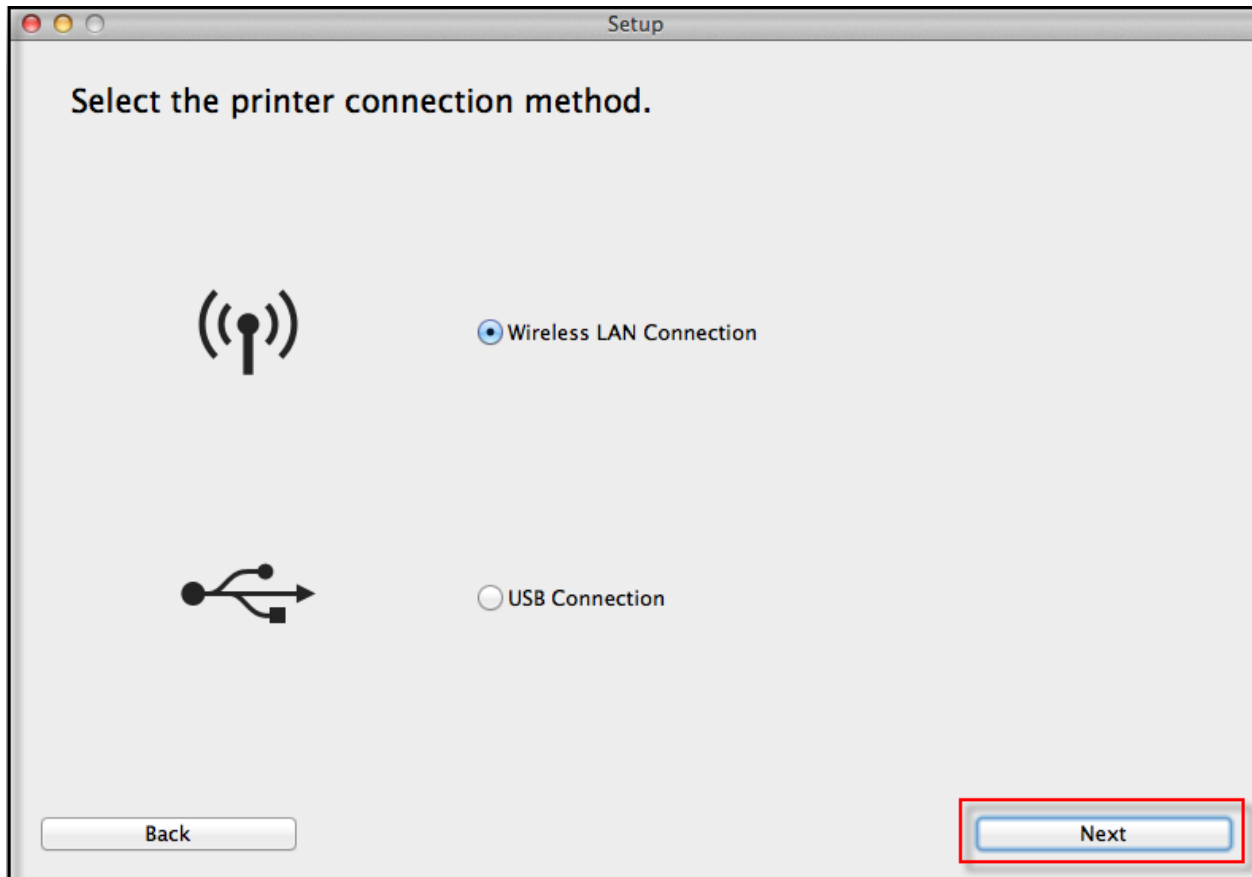
Installing the Drivers & Software

Click **Next** on the following screen.



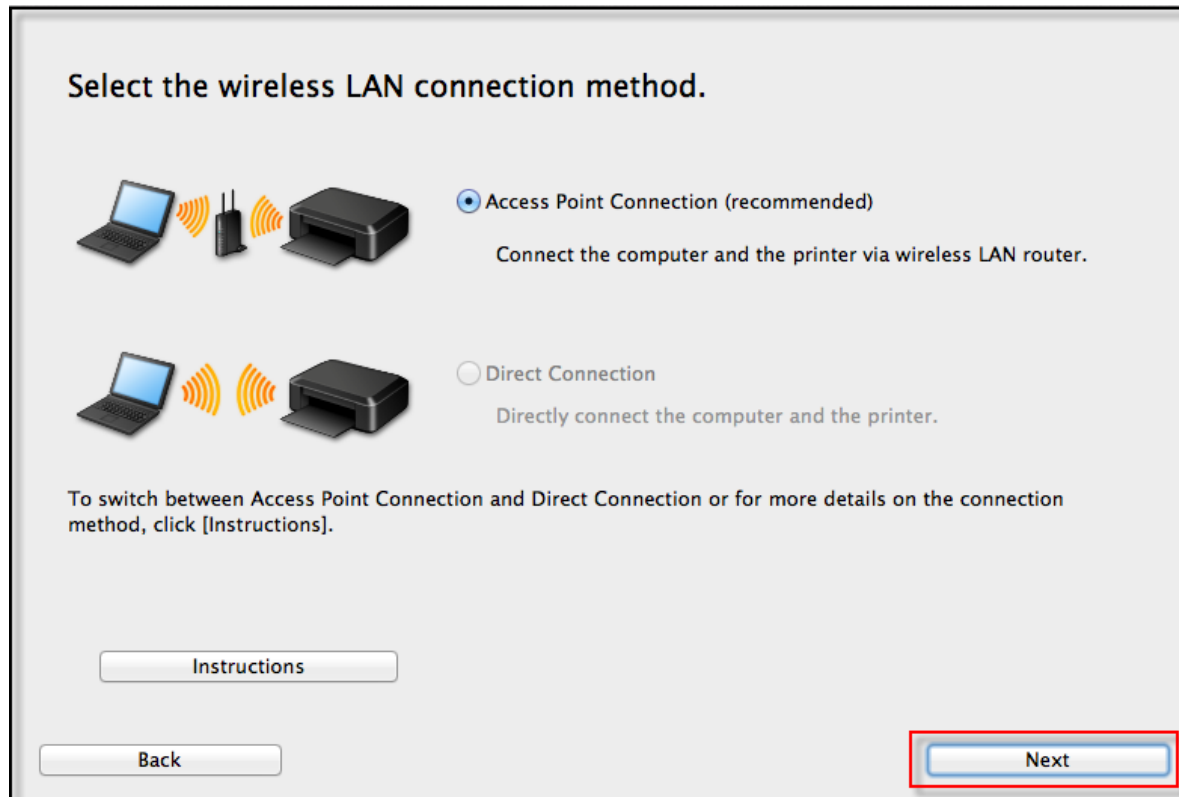
Installing the Drivers & Software

Follow on-screen instructions. Select **Wireless LAN Connection** and click **Next** on the following screen.



Installing the Drivers & Software

Follow on-screen instructions. Select **Access Point Connection** and click **Next** on the following screen.



Installing the Drivers & Software

Continue following on-screen instructions. On the **Printers on Network List**, check the **Setting printer could not be found on the list** checkbox and click **Next**.

Printers on Network List

Serial Number	MAC Address	IP Address

Setting printer could not be found on the list

Update

1. To set a printer on the network, select one from the above printers list, and then click [Next]. Serial number can be found on the back of the printer or the Letter of Guarantee.
2. If the setting printer could not be found on the above list, turn on the printer and click [Update].
3. If the printer could not still be found, select [Setting printer could not be found on the list], and the click [Next].

Back Next

Installing the Drivers & Software

Continue to follow on-screen instructions.

Select **Cableless setup** on the **Setup Procedure Selection** screen (2-1).

2-1 Setup Procedure Selection

Select the most suitable connection method from the following.

Connect to **WPS-compatible Access Point**

Setting the Access Point Information to the Printer Directly from Computer, without Operating the Access Point

Cableless setup may take some time. Internet connection may become temporarily unavailable during setup.

Connect Using Other Methods

Installing the Drivers & Software

Carefully follow the instructions on the **Connection via Cableless setup** screen. (3-1). Click **Next**.

3-1 Connection via Cableless setup

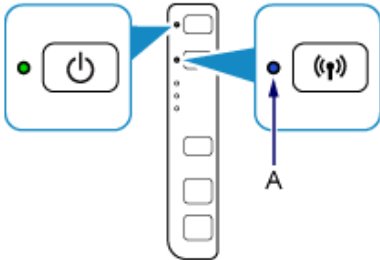
1. Hold down the **Wi-Fi** button (A) on the printer until the **Alarm** lamp (B) flashes 2 times, then release the **Wi-Fi** button after the second flash.

Start Again Back **Next**

Installing the Drivers & Software

Carefully follow the instructions on the **Connection via Cableless setup** screen. (3-2). Click **Next**.

3-2 Connection via **Cableless setup**



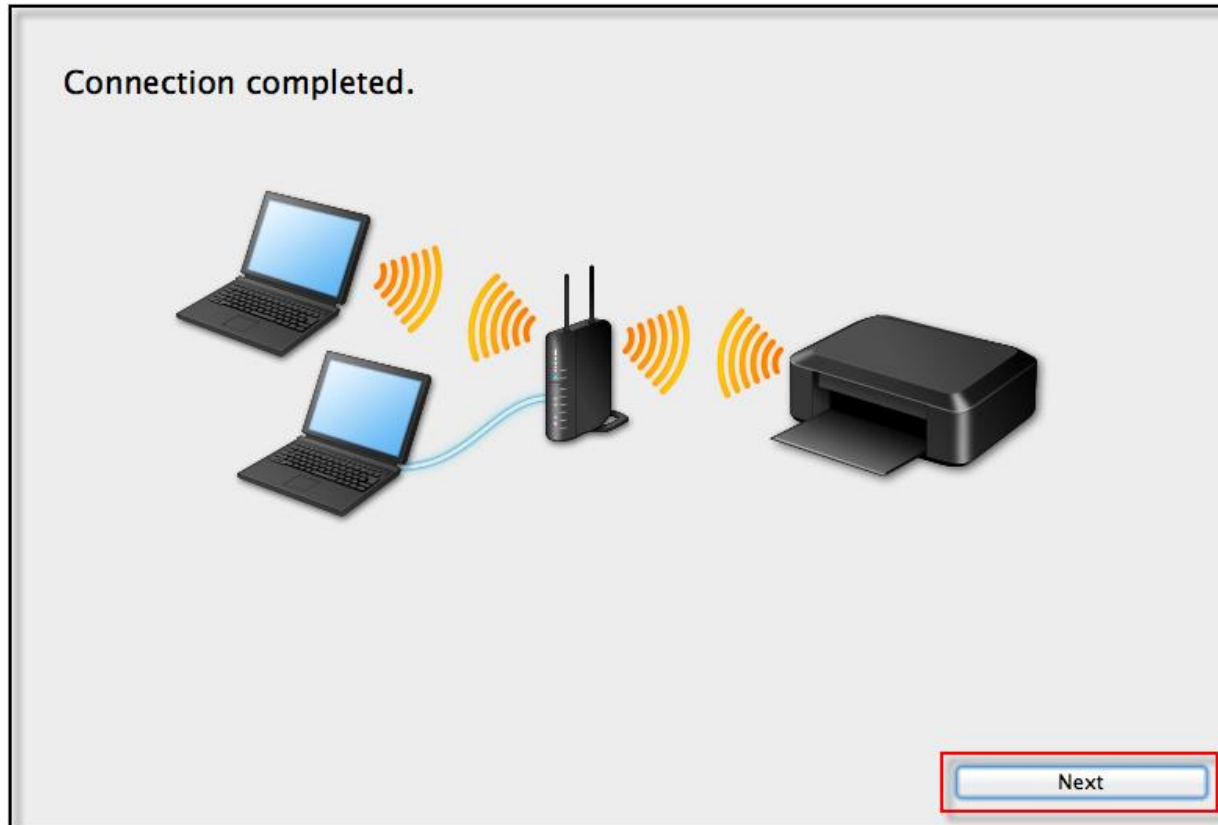
The diagram shows a vertical front panel of a device. At the top, there is a power button icon with a green dot to its left. Below it are several small indicator lamps. The second lamp from the top is labeled 'A' and is shown as a blue dot, indicating it is lit. To the right of the panel, there is a Wi-Fi symbol icon. Blue callout boxes highlight the power button and the Wi-Fi symbol, with arrows pointing to the power button and the Wi-Fi symbol respectively.

1. Make sure that the **Wi-Fi** lamp (A) flashes quickly and the **POWER** lamp is lit as shown in the illustration above.
2. Click **Next**, then follow the instructions on the next screen to proceed with setup.

Start Again Back **Next**

Installing the Drivers & Software

Click **Next** on the **Connection Completed** screen.

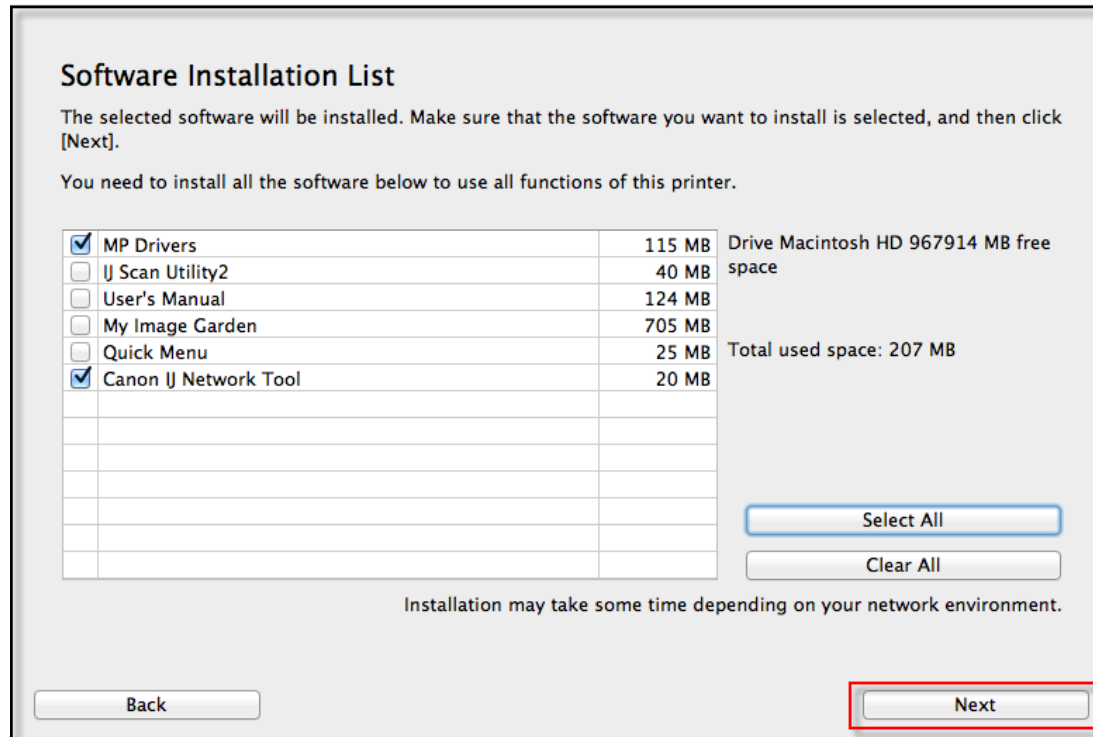


Installing the Drivers & Software

Continue following on-screen instructions. On the **Software Installation List**, select *software to install and click **Next**.

***MP Drivers** and **Canon IJ Network Tool** are required and cannot be deselected. We recommend installing **My Image Garden, Quick Menu** and **IJ Scan Utility2** to take full advantage of the printer's features.

Note : It is not necessary to reinstall any of these additional programs if they were previously installed.



The screenshot shows a 'Software Installation List' window. It contains a table of software items with checkboxes, a 'Back' button, and a 'Next' button (highlighted with a red box). The table lists 'MP Drivers' (checked, 115 MB), 'IJ Scan Utility2' (unchecked, 40 MB), 'User's Manual' (unchecked, 124 MB), 'My Image Garden' (unchecked, 705 MB), 'Quick Menu' (unchecked, 25 MB), and 'Canon IJ Network Tool' (checked, 20 MB). To the right of the table, it indicates 'Drive Macintosh HD 967914 MB free space' and 'Total used space: 207 MB'. Below the table are 'Select All' and 'Clear All' buttons. At the bottom, there is a 'Back' button and a 'Next' button, with the 'Next' button highlighted by a red rectangle.

Software Installation List

The selected software will be installed. Make sure that the software you want to install is selected, and then click [Next].

You need to install all the software below to use all functions of this printer.

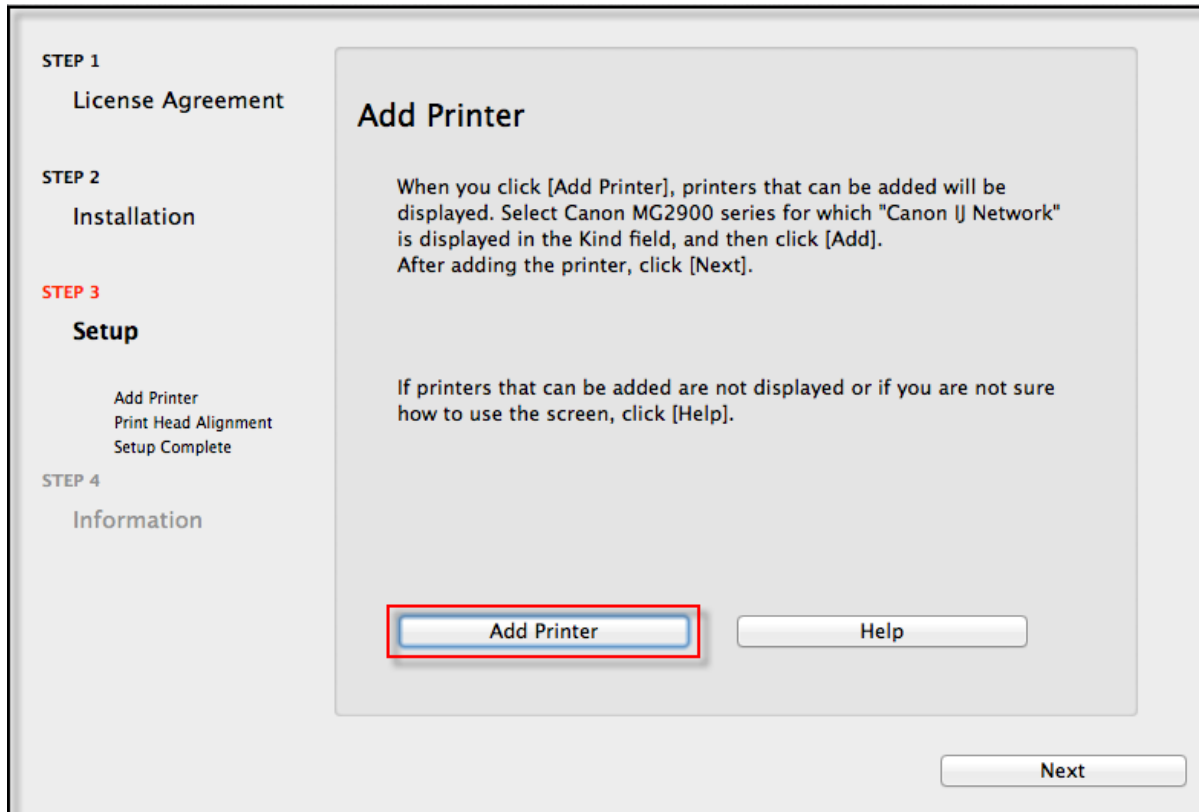
<input checked="" type="checkbox"/>	MP Drivers	115 MB	Drive Macintosh HD 967914 MB free space Total used space: 207 MB
<input type="checkbox"/>	IJ Scan Utility2	40 MB	
<input type="checkbox"/>	User's Manual	124 MB	
<input type="checkbox"/>	My Image Garden	705 MB	
<input type="checkbox"/>	Quick Menu	25 MB	
<input checked="" type="checkbox"/>	Canon IJ Network Tool	20 MB	
<input type="checkbox"/>			
<input type="checkbox"/>			
<input type="checkbox"/>			
<input type="checkbox"/>			
<input type="checkbox"/>			
<input type="checkbox"/>			

Installation may take some time depending on your network environment.

Back Next

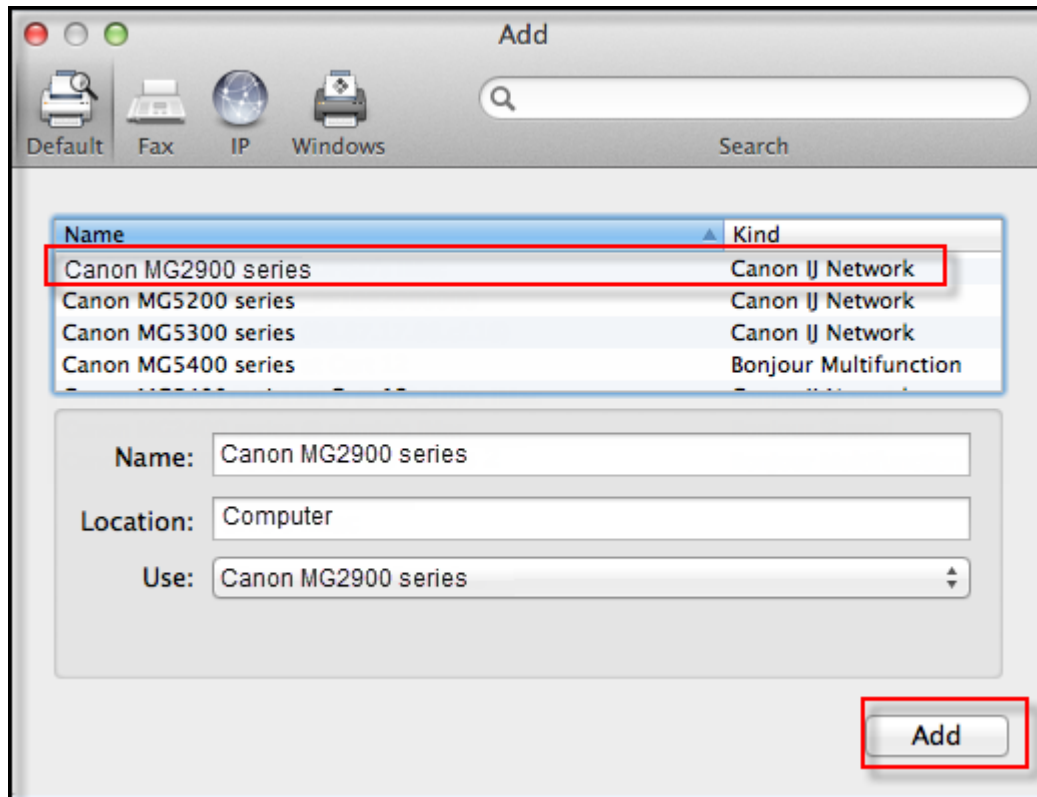
Adding the Printer

Continue following the on-screen instructions.
When the **Add Printer** screen appears, click **Add Printer**.



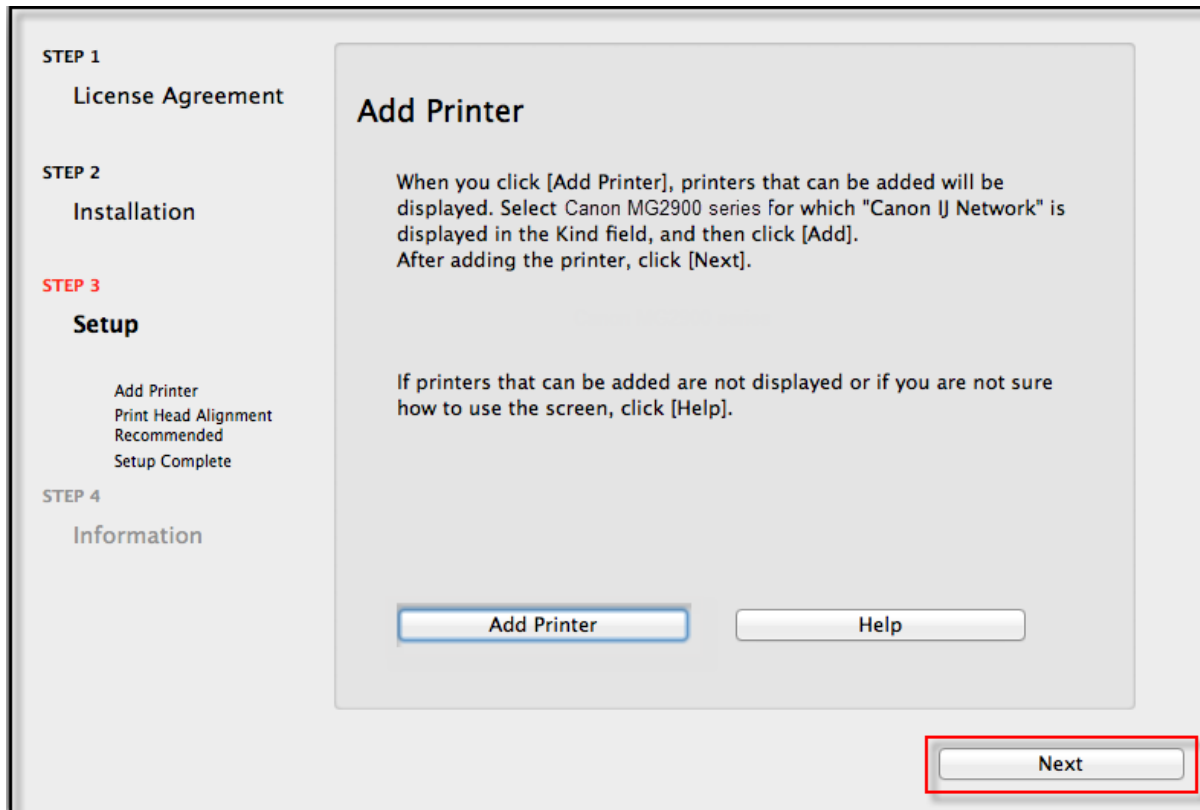
Adding the Printer

Select the **Canon MG2900 series** with **Canon IJ Network** listed in the **Kind** column, then click **Add**.



Adding the Printer

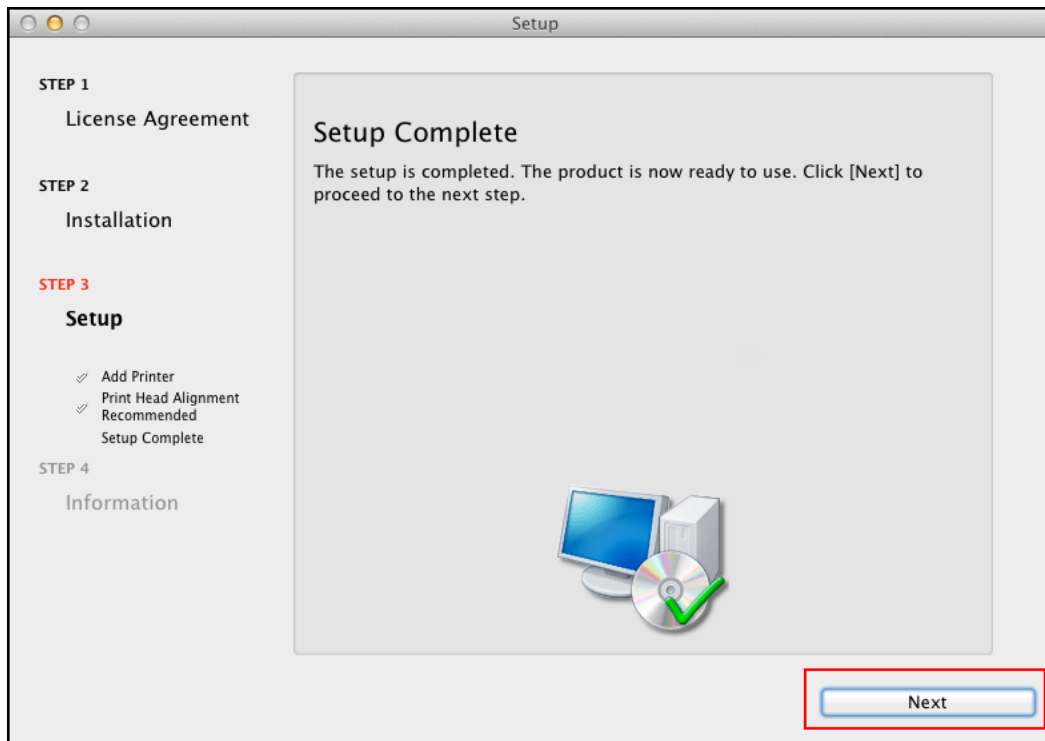
Click **Next** on the **Add Printer** screen.



Completing the Setup

Continue following on-screen instructions.

When the **Setup Complete** screen appears, click **Next**.



At this point, setup of the printer and network is complete. Continue to follow any remaining on-screen instructions to finish and exit the setup program.