



# Workflow Composer

## Software Solution

- streamlined workflow
- reduce processes
- external systems connection



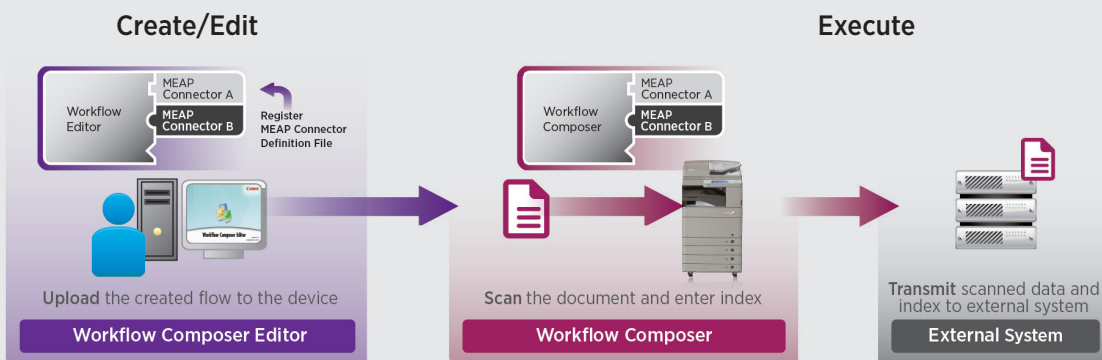
**“So advanced it’s simple”**



# Simplified operation. Compose a better way to work.

## Workflow Composer

for the imageRUNNER® ADVANCE Series



A solution that simplifies the Canon imageRUNNER ADVANCE system's operation by easily combining multiple user operations into a personalized, one-step button that accelerates workflows.

For example, a user can register a series of operations, such as scanning a letter-sized original, sending it by fax, and then storing a backup copy of a scanned PDF file in a network folder location.

Administrators can pre-define folders to make saving easier for users with a drop-down index, or leave it up to the users to designate a specific destination. The naming of files can be freeform or automated using either a scheme specified at the system-level, the user-level, or according to a designed pattern.

### Seamless Connections

Workflow Composer automates the sophisticated input and output features of imageRUNNER ADVANCE systems through simple macros, as well as enhancing workflows through a number of standard and optional connectors and features.

It has a MEAP® application (installed on an imageRUNNER ADVANCE model) and a PC application (Workflow Composer Editor). It also includes Standard Connectors and offers Optional Connectors that can be purchased separately.

### Workflow Composer Editor

Workflow Composer Editor is an application for creating flows on a Windows® based computer. To create a flow, first select an imageRUNNER ADVANCE model as the target. Once a model is selected, the Workflow Composer Editor connects to it, enabling you to create flows utilizing the available functions. When uploaded and registered in the selected target, the flow can be executed on the imageRUNNER ADVANCE system.

Flows stored in a target can also be retrieved, edited with the Workflow Composer Editor, and then uploaded to the target again or to other imageRUNNER ADVANCE systems.

## Standard Connectors

### MEAP Connector for SMB

Scan to send documents by SMB Protocol, with or without Index Data.

### MEAP Connector for FTP

Scan to send documents by FTP Protocol, with or without Index Data.

### MEAP Connector for WebDav

Scan to send documents by WebDav Protocol, with or without Index Data.

### Index Lookup Option for MEAP Connector

Looks up the Index Data Table on an external server in conjunction with other MEAP Connectors.

## Option: Other Server Connectors

### MEAP Connector for Document Server

Scan to send the documents to imageWARE Document Server with Index Data.

### MEAP Connector for SharePoint® Server

Scan to send the documents to SharePoint Server 2007/2010 with Index Data.

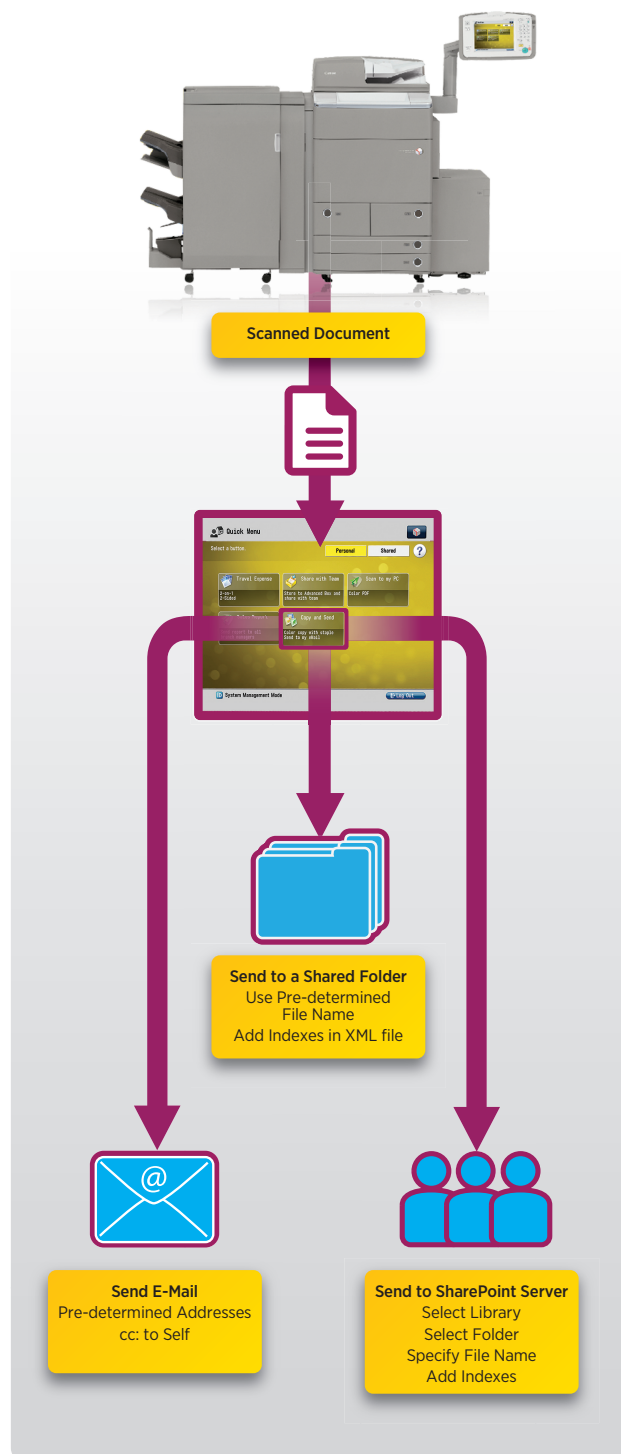
## Advanced Productivity

Canon Workflow Composer easily transforms paper into business value by leveraging Canon imageRUNNER ADVANCE technology to bridge paper and digital workflows, seamlessly integrating paper documents and business applications.

- Multiple tasks combined into one operation with Workflow Connector buttons
- Scan documents with Index data
- Send to pre-defined or ad hoc destinations
- Eliminate or reduce processes
- Achieve goals in less time

## Solution

A better way to work for everyone



## Workflow Composer

### Workflow Composer and MEAP Connectors

#### Workstations

##### Operating Systems

Windows 2000 Professional  
Windows XP Professional SP3  
Windows Vista® SP2  
Windows 7  
Windows Server 2003 SP2  
Windows Server 2003 R2 SP2  
Windows Server 2008 SP2  
Windows Server 2008 R2  
Mac® OS X 10.3  
Mac OS X 10.4  
Mac OS X 10.5  
Mac OS X 10.6

##### Web Browsers

Internet Explorer® 6 SP1  
Internet Explorer 7  
Internet Explorer 8  
Internet Explorer 8  
Internet Explorer 7  
Internet Explorer 8  
Internet Explorer 8  
Safari® 1.3.2  
Safari 2.0.4  
Safari 3.1.2  
Safari 4.0.3

#### Workflow Composer Editor

##### Operating Systems

- Windows 2000 Professional SP4 (32-bit)
- Windows XP Professional SP2, SP3 (32-bit)
- Windows Vista Business/Ultimate/Enterprise SP1, SP2 (32-bit, 64-bit)
- Windows 7 Professional/Ultimate/Enterprise (32-bit, 64-bit)
- Windows 2000 Server SP4 (32-bit)
- Windows Server 2003 SP2 (32-bit)
- Windows Server 2003 R2 SP2 (32-bit)
- Windows Server 2008 (32-bit, 64-bit)
- Windows Server 2008 SP2 (32-bit, 64-bit)
- Windows Server 2008 R2



**Because It Counts**

1-800-OK-CANON

[www.canon.ca](http://www.canon.ca)

Canon Canada Inc.